



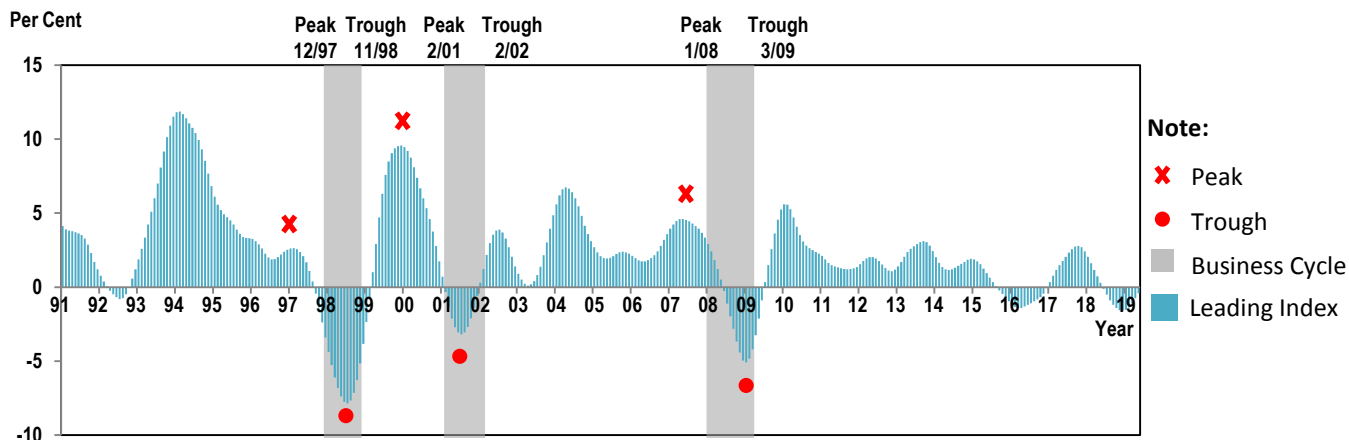
MALAYSIAN ECONOMIC INDICATORS LEADING, COINCIDENT & LAGGING INDEXES

7 COMPONENTS OF LEADING INDEX

The Leading Index (LI) provides early signal on the overall economic direction in average of four to six months ahead. The index shows where the economy will be going, either slow, moderate or expansion.

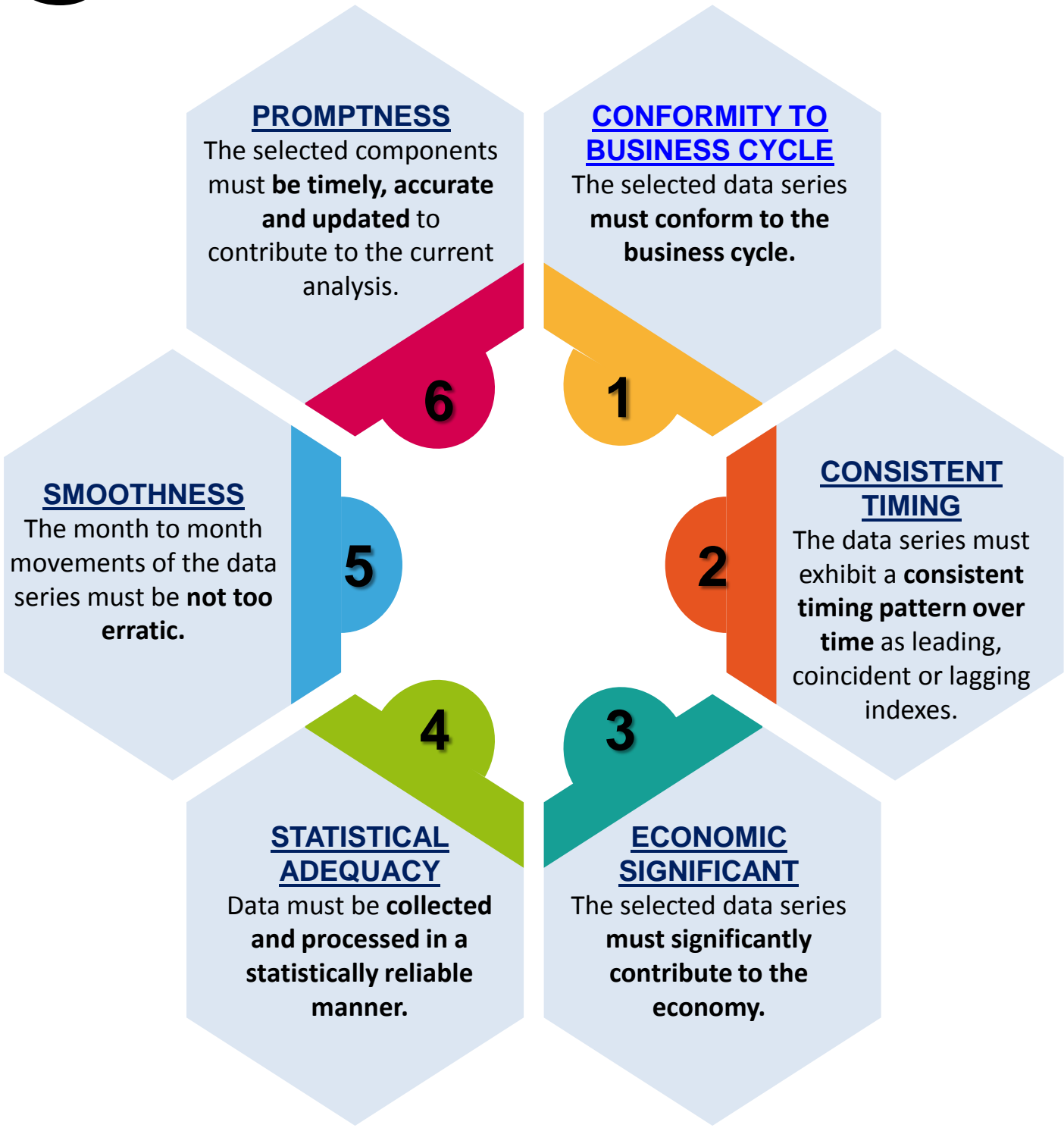
| LI Component | No. of Month Ahead the Economic Direction |
|---|---|
| Real Money Supply, M1 | 1 |
| Bursa Malaysia Industrial Index | 5 |
| Real Imports of Semi Conductors | 3 |
| Real Imports of Other Basic Precious & Other Non-ferrous Metals | 8 |
| Number of Housing Units Approved | 3 |
| Expected Sales Value, Manufacturing | 1 |
| Number of New Companies Registered | 3 |
| LI | 6 |

Growth Rate of Leading Index (Smoothed) and Business Cycle



6 CRITERIA FOR COMPONENT SELECTION

The selection of each component is based on the guideline in the Business Cycle Indicators Handbook, namely;



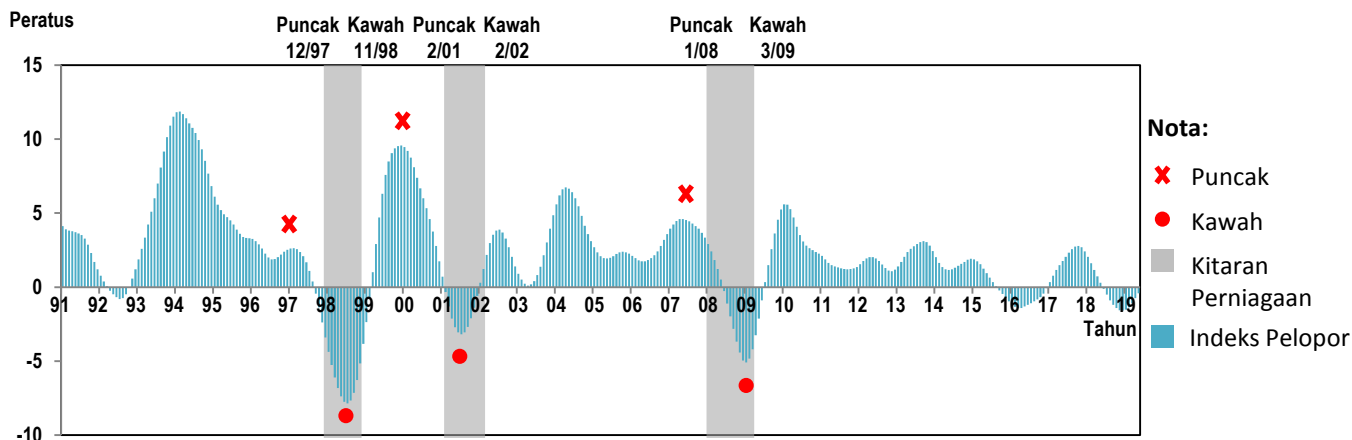
PENUNJUK EKONOMI MALAYSIA INDEKS PELOPOR, SERENTAK & SUSULAN

7 KOMPONEN INDEKS PELOPOR

Indeks Pelopor (IP) memberikan isyarat awal hala tuju ekonomi secara keseluruhan bagi purata empat hingga enam bulan ke hadapan. Indeks ini menunjukkan ke mana arah tuju ekonomi, sama ada perlahan, sederhana atau berkembang.

| Komponen IP | | Di. bulan ni mendahului pergerakan ekonomi |
|--|---|--|
|  | Penawaran Wang Benar, M1 | 1 |
|  | Indeks Perusahaan Bursa Malaysia | 5 |
|  | Import Benar Semi Konduktor | 3 |
|  | Import Benar Logam Asas Berharga & Logam Bukan Ferus Lain | 8 |
|  | Bilangan Unit Kediaman yang Diluluskan Pembinaan | 3 |
|  | Jangkaan Nilai Jualan, Pembuatan | 1 |
|  | Bilangan Syarikat Baru Didaftar | 3 |
| IP | | 6 |

Kadar Pertumbuhan bagi Indeks Pelopor (Terlicin) dan Kitaran Perniagaan



6 KRITERIA PEMILIHAN KOMPONEN

Pemilihan setiap komponen adalah mengikut garis panduan yang terkandung dalam *Business Cycle Indicators Handbook*, iaitu;

