



DEPARTMENT OF STATISTICS MALAYSIA

PRESS RELEASE

ECONOMIC CENSUS 2016 - CROPS

Value added of agriculture sector recorded an annual growth rate of 5.9 per cent compared to 2010

In 2015, number of establishments operating in the agriculture sector was 11,628 establishments with an annual growth of 5.7 per cent. Gross output in 2015 was RM73,853.6 million, an increase of 6.7 per cent per year compared to RM53,452.1 million in 2010 while value added for this sector was RM41,473.4 million.

Agriculture sector provides job opportunities to 444,531 people, recorded an annual growth of 2.6 percent within five years with salaries & wages paid amounting RM7,904.3 million. This sector recorded the highest increase in the average monthly salaries of 7.3 per cent to RM1,504 in 2015.

Women-owned establishment in the agricultural sector was 1,541 establishments with an annual growth rate of 21.6 per cent as compared to 2010. Gross output contribution was RM5,228.6 million, 7.1 per cent of the total gross output of the agricultural sector with value added of RM2,824.6 million.

Crops sub-sector

In 2015, number of establishments involved in the crops sub-sector was 8,029 establishments. Gross output value was RM50,763.3 million or 68.7 per cent from total gross output of the agriculture sector with value added of RM34,309.5 million. This sub-sector also provides job opportunities to 368,002 people with salaries & wages paid amounting RM6,125.8 million.

The women-owned establishment recorded in 2015 was 1,189 establishments with an annual growth of 22.0 per cent compared to 2010. Gross output contribution was RM3,931.6 million or 7.7 per cent from total gross output of the crops sub-sector.

Oil palm industry was a major industry in the crops sub-sector with involvement of 5,386 establishments. Contribution of gross output in 2015 was RM47,162.6 million, an increase of 6.3 per cent per year from RM34,699.6 million in 2010. Meanwhile, value added of this industry was RM32,477.5 million.

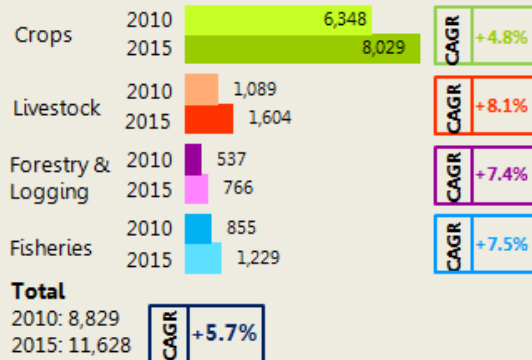


ECONOMIC CENSUS 2016

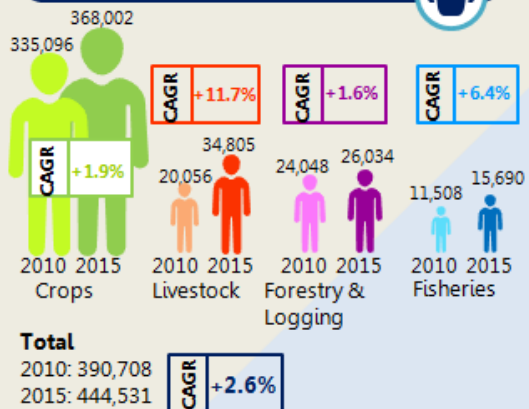


MAIN FINDINGS OF AGRICULTURE SECTOR

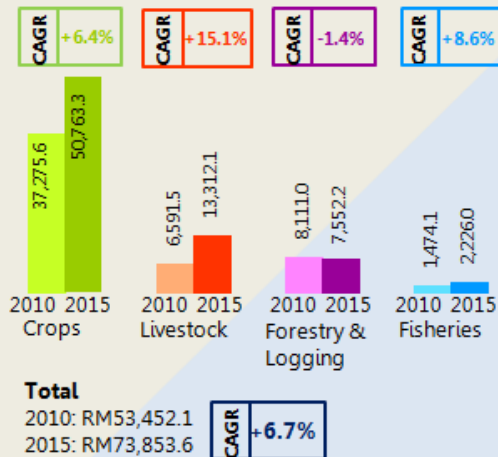
Number of establishment



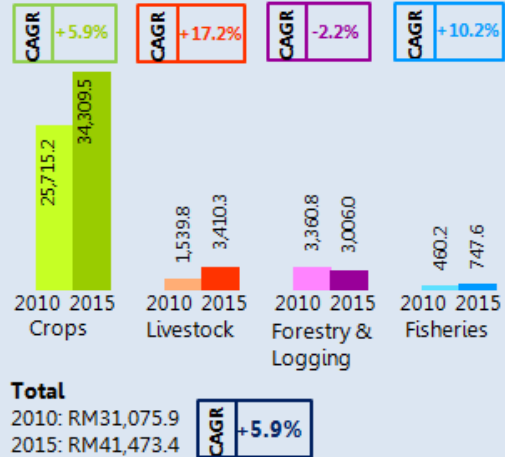
Number of persons engaged



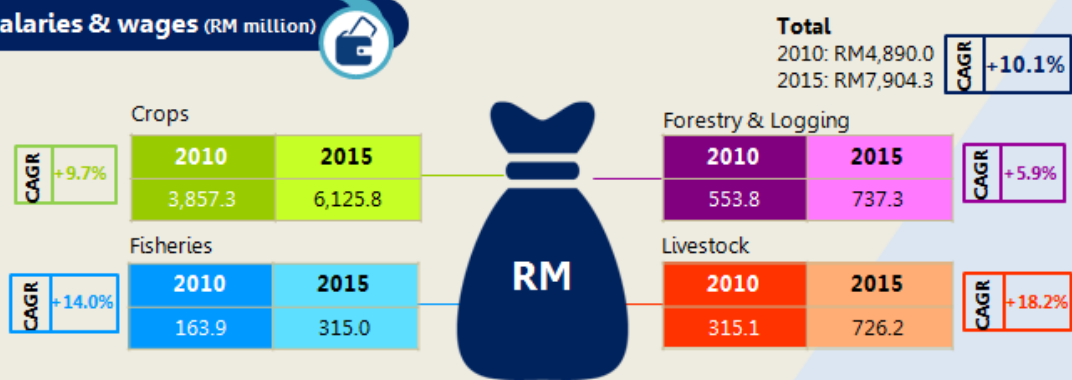
Gross output (RM million)



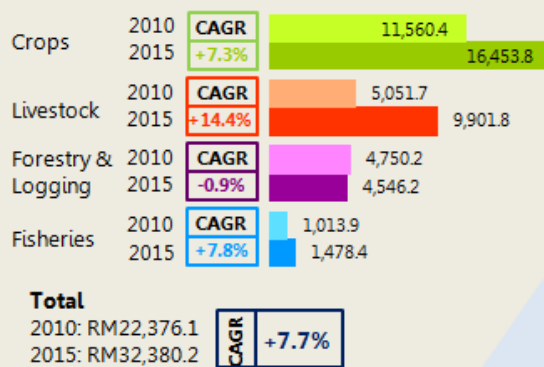
Value added (RM million)



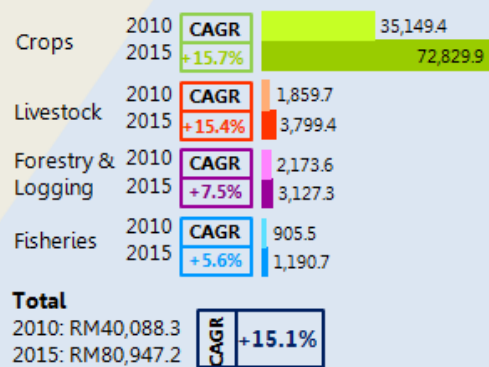
Salaries & wages (RM million)



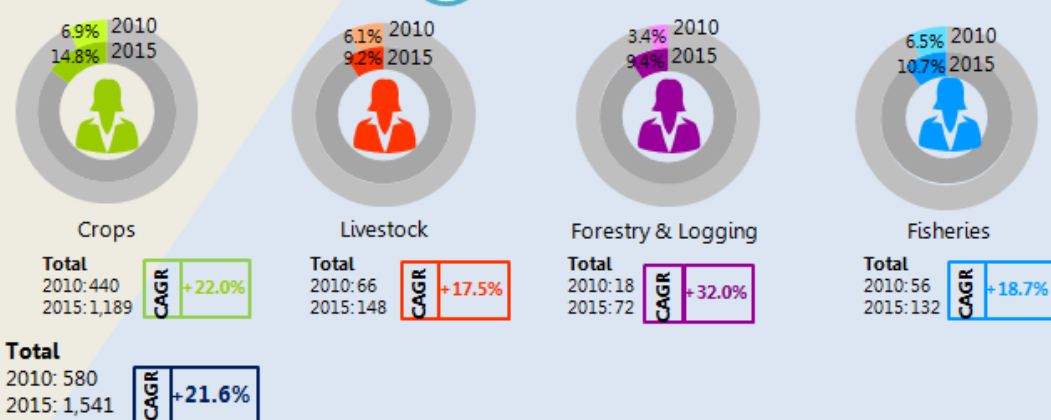
Intermediate input (RM million)



Fixed assets (RM million)



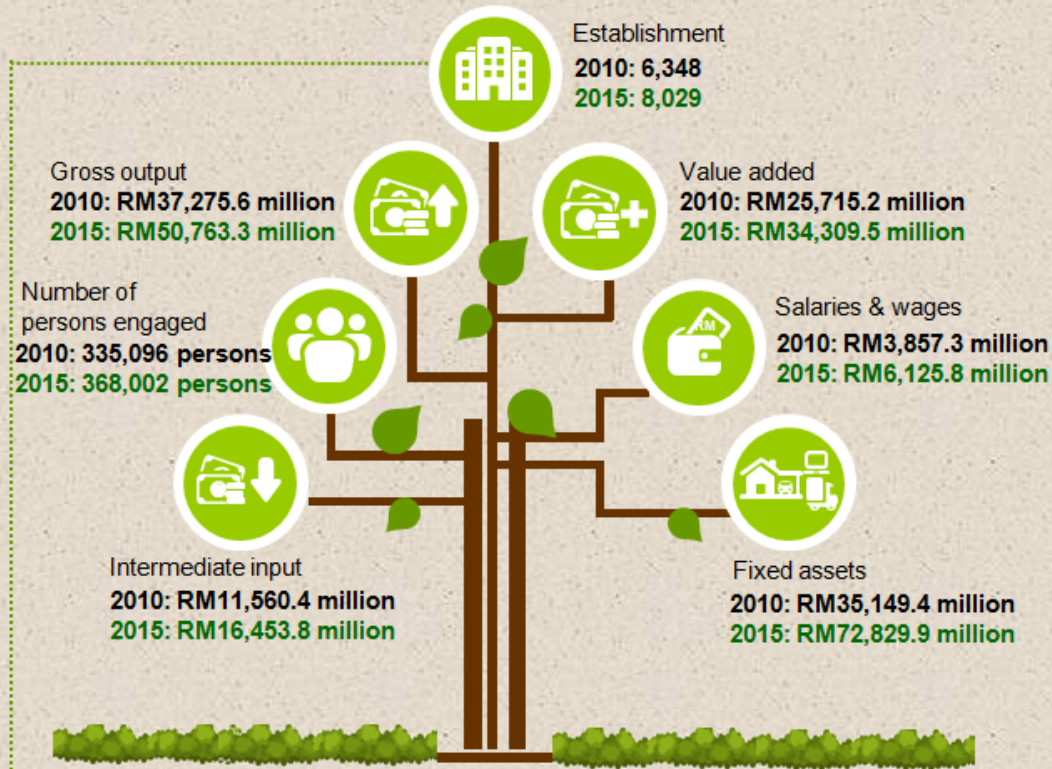
Women-owned establishment



ECONOMIC CENSUS 2016

CROPS SUB-SECTOR

Value added of crops sub-sector recorded an annual growth rate of 5.9 per cent compared to 2010



Women-owned establishment, 2015

Gross output	RM3,931.6 million
Intermediate input	RM1,486.5 million
Value added	RM2,445.1 million
Number of persons engaged	34,178 persons
Salaries & wages	RM612.3 million
Fixed assets	RM8,414.5 million

Highest contributor, 2015



Oil palm industry

5,386 establishments

Gross output

RM47,162.6 million



323,653 persons

RELEASED BY:

**THE OFFICE OF CHIEF STATISTICIAN MALAYSIA
DEPARTMENT OF STATISTICS, MALAYSIA**

10 July 2017

Contact person:

Ho Mei Kei
Public Relation Officer
Corporate and User Services Division
Department of Statistics, Malaysia
Tel : +603-8885 7942
Fax : +603-8888 9248
Email : mkho[at]stats.gov.my