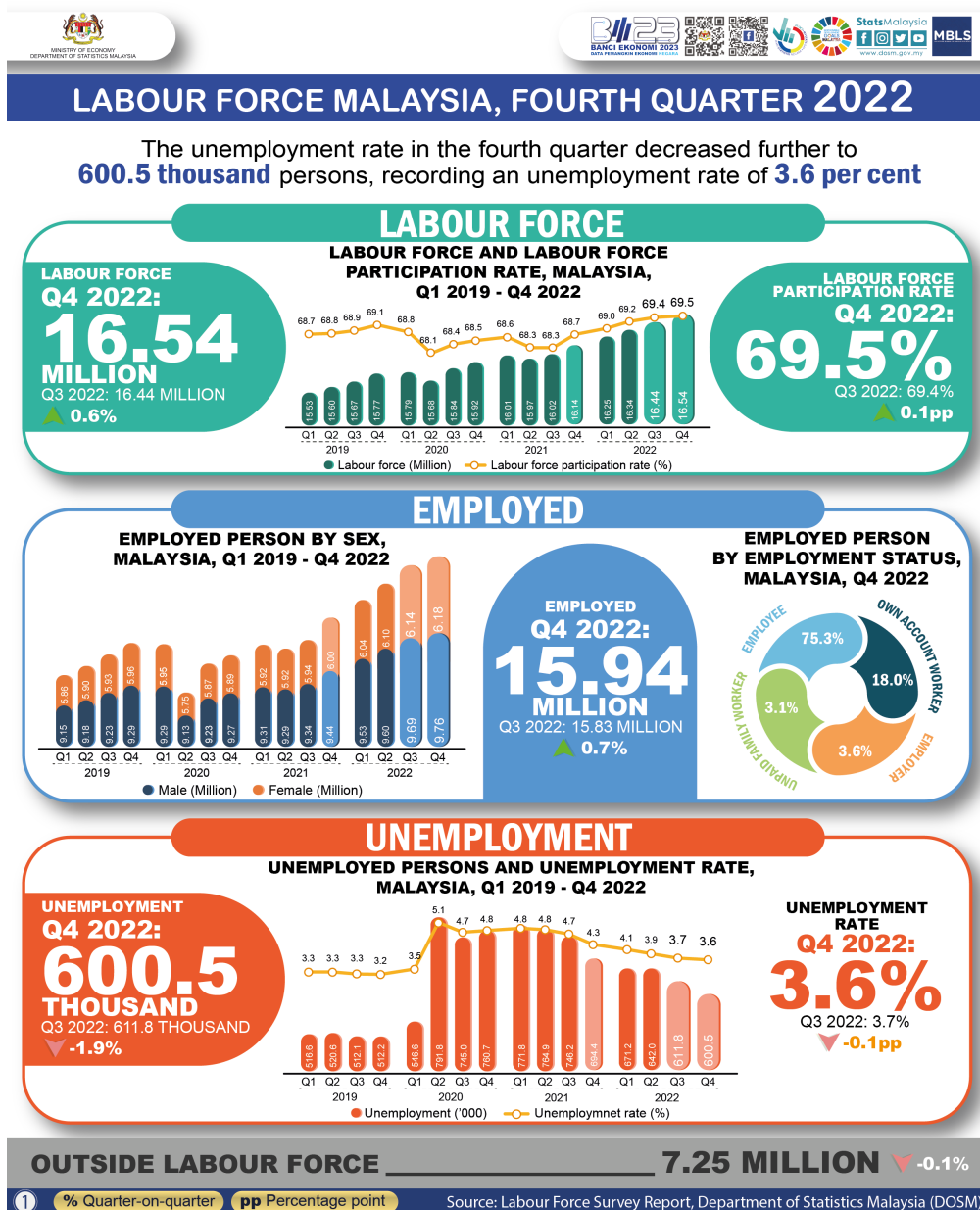




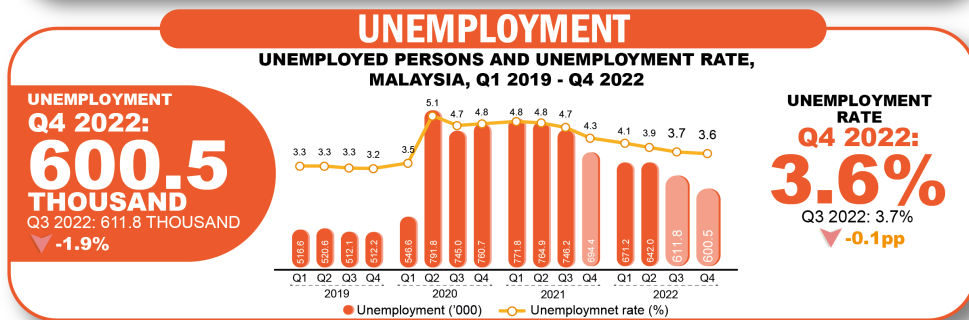
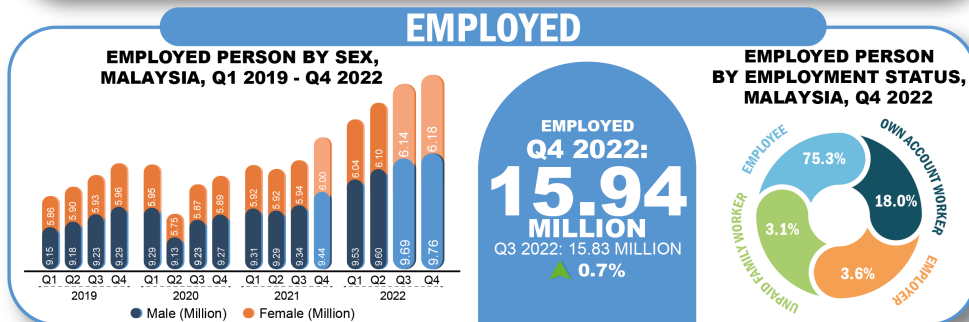
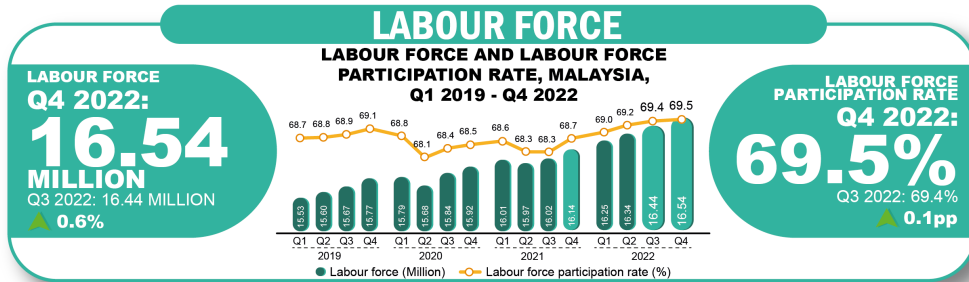
MINISTRY OF ECONOMY  
DEPARTMENT OF STATISTICS MALAYSIA

QUARTERLY PRINCIPAL STATISTICS OF LABOUR FORCE, MALAYSIA



# LABOUR FORCE MALAYSIA, FOURTH QUARTER 2022

The unemployment rate in the fourth quarter decreased further to **600.5 thousand** persons, recording an unemployment rate of **3.6 per cent**



**OUTSIDE LABOUR FORCE** **7.25 MILLION** ▼ **-0.1%**

① % Quarter-on-quarter    pp Percentage point    Source: Labour Force Survey Report, Department of Statistics Malaysia (DOSM)

- In the fourth quarter of 2022, the labour force continued to expand in the fourth quarter of 2022 (Q3 2022: 16.44 million persons), with an increase of 0.6 per cent or 99.3 thousand persons registering 16.54 million persons. Subsequently, the labour force participation rate (LFPR) increased by 0.1 percentage points to mark 69.5 per cent as compared to the previous quarter (Q3 2022: 69.4%).
- In terms of employment, the number of employed persons posted a quarter-on-quarter rise by 0.7 per cent(+110.6 thousand persons) to 15.94 million persons in the fourth quarter of 2022 (Q3 2022: 15.83 million persons). Year-on-year comparison, the number of employed persons increased by 3.2 per cent or equivalent to 501.1 thousand persons as compared to the fourth quarter of 2021 (Q4 2021: 15.44 million persons).
- During this quarter, the number of unemployed persons fell by 1.9 per cent or equivalent to a reduction of 11.4 thousand persons to 600.5 thousand persons in the fourth quarter of 2022 (Q3 2022: 611.8 thousand

persons). Thus, the unemployment rate slightly decreased to 3.6 per cent during the quarter as compared to 3.7 per cent recorded in the previous quarter.

- In terms of LFPR by states, the labour force participation rate at the national level continued to increase to 69.5 per cent. In the meantime, nine states registered increases in LFPR which indicates higher labour participation in the market. The highest LFPR was observed in W.P. Putrajaya (77.6%), followed by Selangor at 75.9 per cent and then Pulau Pinang (71.8%), Sabah (70.6%) and Sarawak (69.8%).
- Looking at the unemployment situation by state, most of the states posted a reduction in the unemployment rate except for Kedah, Kelantan, Melaka and Putrajaya, while Terengganu remained unchanged. The lowest unemployment rate during this quarter was in W.P. Putrajaya with 1.6 per cent, followed by Perlis (2.2%), Pulau Pinang (2.3%), Johor (2.4%) and Negeri Sembilan (2.6%).

**Contact person:**

Baharudin Mohamad  
Public Relation Officer  
Strategic Communication and International Division  
Department of Statistics Malaysia  
Tel : +603-8885 7942  
Fax : +603-8888 9248  
Email : baharudin[at]dosm.gov.my

**Copyright ©2025 Department of Statistics Malaysia Official Portal. All Rights Reserved.**