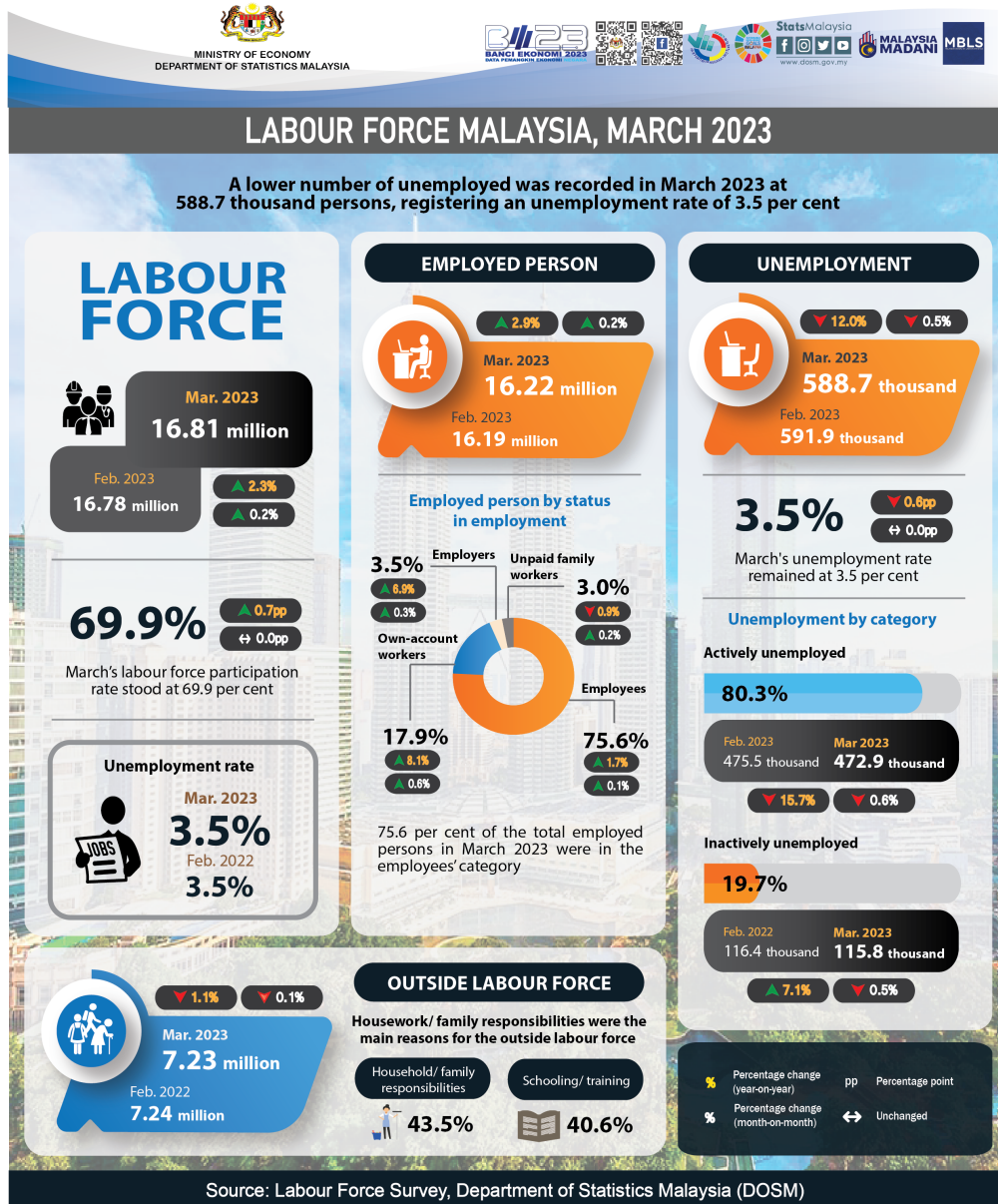
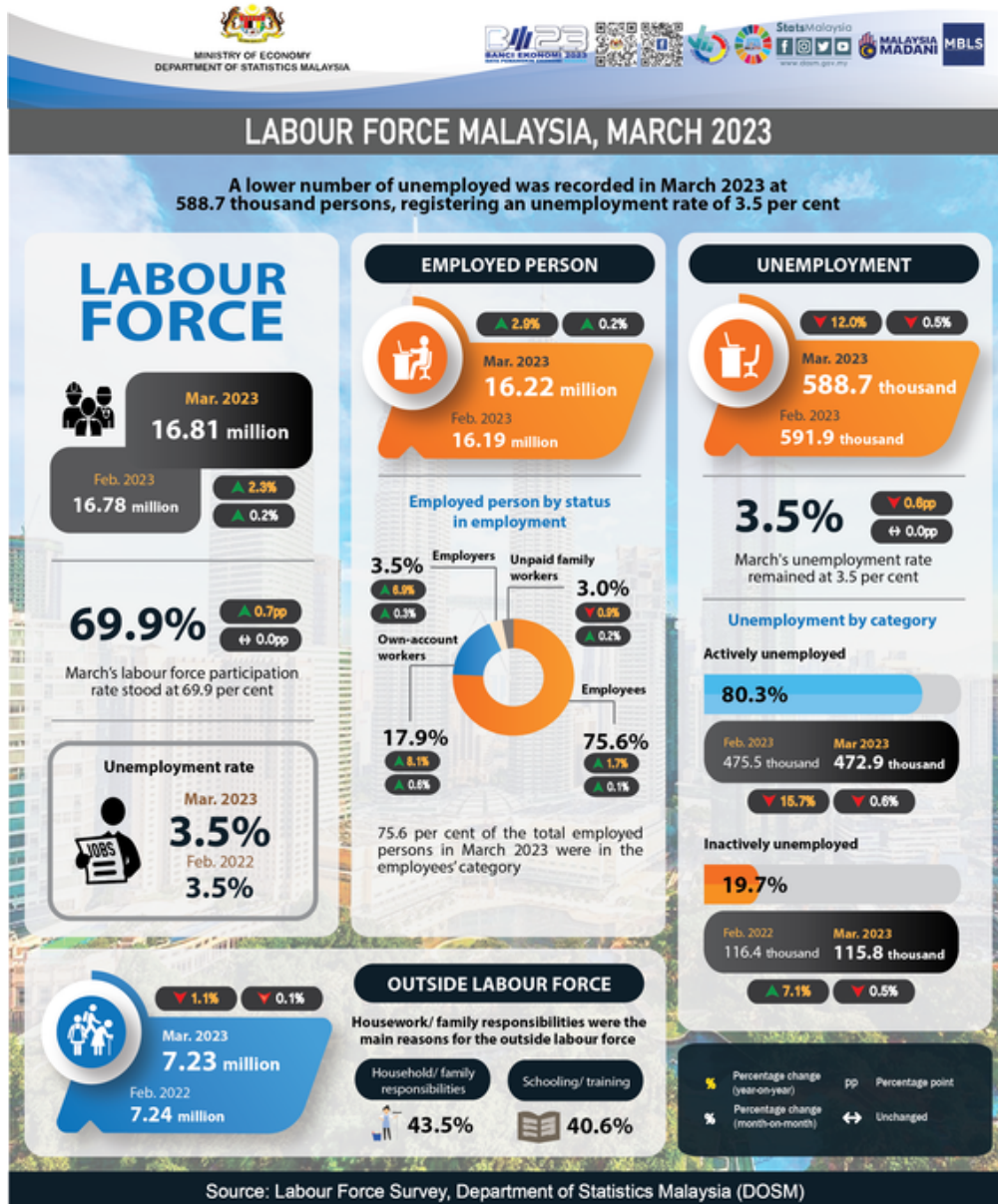




MINISTRY OF ECONOMY
DEPARTMENT OF STATISTICS MALAYSIA

MONTHLY PRINCIPAL STATISTICS OF LABOUR FORCE





- The number of employed persons was on an upward trend, it increased by 0.2 per cent (+33.7 thousand persons) in March 2023, reaching a total of 16.22 million persons, compared to 16.19 million persons in February 2023. During the month, the employment-to-population ratio which indicates the ability of an economy to create employment, rose by 0.1 percentage points to 67.5 per cent as compared to 67.4 per cent in February 2023.
- In terms of the economic sector, the Services sector saw a continued increase in the number of employed persons, with notable growth in Wholesale & retail trade; Food & beverage services, and Administrative & support service activities. Similar trends in employment were observed in the Manufacturing, Construction, and Mining & quarrying sectors, as well as Agriculture.
- Out of the total employed persons during the month, 75.6 per cent were in the employees' category. This category registered a rise of 0.1 per cent (+14.8 thousand persons) month-on-month to record 12.26 million persons as compared to 12.25 million persons in February 2023. On the same note, the number of own-account workers also increased by 0.6 per cent (+16.6 thousand persons) to 2.91 million persons (February 2023: 2.89 million persons).
- In March 2023, the number of unemployed persons continued to decrease, falling by 0.5 per cent (-3.2 thousand persons) to 588.7 thousand persons (February 2023: 591.9 thousand persons).

March's unemployment rate remained at 3.5 per cent (February 2023: 3.5%).

- The number of labour force in March 2023 strengthened further by 0.2 per cent (+30.5 thousand persons) to 16.81 million persons (February 2023: 16.78 million persons). March's labour force participation rate (LFPR) stood at 69.9 per cent (February 2023: 69.9%).
- In March 2023, the number of persons outside the labour force continued its downward trend with a decline of 6.1 thousand persons (-0.1%) to 7.23 million persons (February 2023: 7.24 million persons). Housework/ family responsibilities were the main reasons for the outside labour force with a contribution share of 43.5 per cent, while schooling/ training ranked second with 40.6 per cent.

The full publication of the Labour Force Report, March 2023 can be downloaded through [eStatistik Portal](#).

Released by:

DEPARTMENT OF STATISTICS MALAYSIA

11 May 2023

Contact person:

Baharudin Mohamad

Public Relation Officer

Strategic Communication and International Division

Department of Statistics Malaysia

Tel : +603-8885 7942

Fax : +603-8888 9248

Email : baharudin[at]dosm.gov.my

Copyright ©2025 Department of Statistics Malaysia Official Portal. All Rights Reserved.