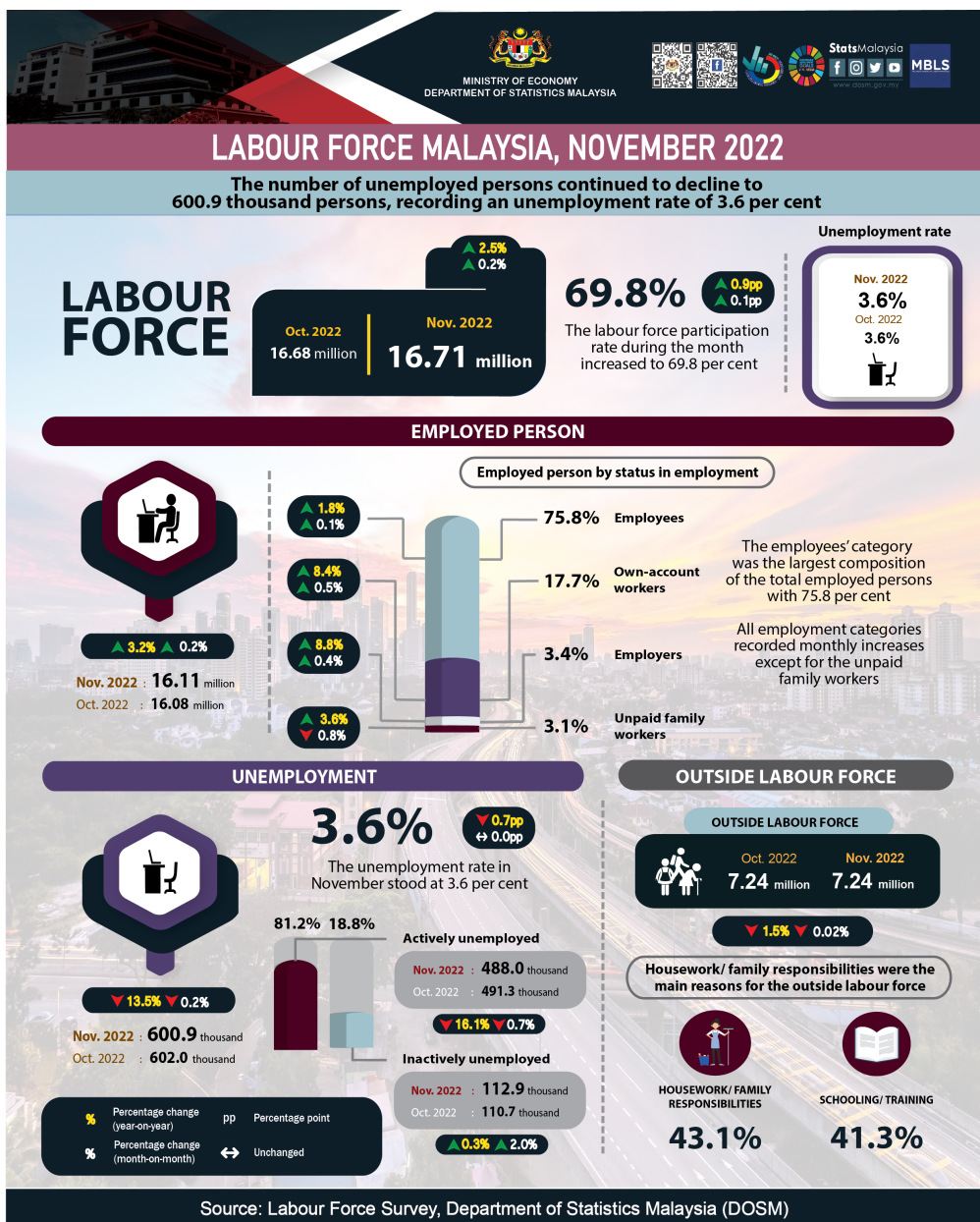




MINISTRY OF ECONOMY  
DEPARTMENT OF STATISTICS MALAYSIA

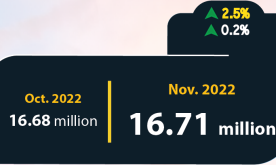
MONTHLY PRINCIPAL STATISTICS OF LABOUR FORCE



# LABOUR FORCE MALAYSIA, NOVEMBER 2022

The number of unemployed persons continued to decline to 600.9 thousand persons, recording an unemployment rate of 3.6 per cent

## LABOUR FORCE



**69.8%** ▲ 0.9pp  
▲ 0.1pp  
The labour force participation rate during the month increased to 69.8 per cent

### Unemployment rate

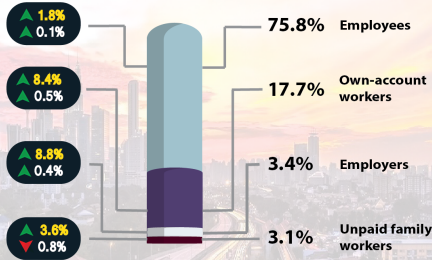


## EMPLOYED PERSON



**16.11 million**  
Nov. 2022 : 16.11 million  
Oct. 2022 : 16.08 million

### Employed person by status in employment



The employees' category was the largest composition of the total employed persons with 75.8 per cent

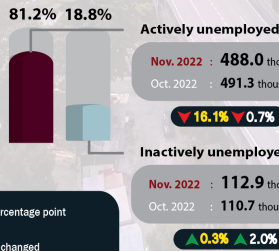
All employment categories recorded monthly increases except for the unpaid family workers

## UNEMPLOYMENT



**600.9 thousand**  
Nov. 2022 : 600.9 thousand  
Oct. 2022 : 602.0 thousand

**3.6%** ▼ 0.7pp  
↔ 0.0pp  
The unemployment rate in November stood at 3.6 per cent



**488.0 thousand**  
Nov. 2022 : 488.0 thousand  
Oct. 2022 : 491.3 thousand

**112.9 thousand**  
Nov. 2022 : 112.9 thousand  
Oct. 2022 : 110.7 thousand

## OUTSIDE LABOUR FORCE

### OUTSIDE LABOUR FORCE

**7.24 million**  
Oct. 2022 : 7.24 million  
Nov. 2022 : 7.24 million

▼ 1.5% ▼ 0.02%

Housework/ family responsibilities were the main reasons for the outside labour force



HOUSEWORK/ FAMILY RESPONSIBILITIES

**43.1%**



SCHOOLING/ TRAINING

**41.3%**

% Percentage change (year-on-year) pp Percentage point  
% Percentage change (month-on-month) ↔ Unchanged

- In November 2022, the number of employed persons persistently increased since August 2021, with an addition of 0.2 per cent (+27.1 thousand persons) month-on-month to 16.11 million persons (October 2022: 16.08 million persons). The employment-to-population ratio which indicates the ability of an economy to create employment, increased slightly during the month by 0.1 percentage points to 67.3 per cent as against 67.2 per cent in October 2022.
- In terms of economic sector, the Services sector continued to register positive growth in the number of employed persons, particularly in Wholesale & retail trade; Food & beverage services and Information & communication activities. In the meantime, the Manufacturing, Construction and Agriculture sectors also posted increases in the number of employed persons, while employment in the Mining & quarrying sector recorded a rise for the first time since July 2020.
- The employees' category, which covers 75.8 per cent of the total employed persons, continued to record an increase of 0.1 per cent (+14.2 thousand persons) to 12.21 million persons in November 2022 (October 2022: 12.20 million persons). Likewise, own-account workers were also on an increasing trend, with an addition of 14.5 thousand persons (+0.5%) to 2.85 million persons (October 2022: 2.83 million persons).
- In November 2022, the number of unemployed persons continued to be on a declining trend with a reduction of 0.2 per cent or equivalent to 1.1 thousand persons to 600.9 thousand persons (October 2022: 602.0 thousand persons), recording November's unemployment rate at 3.6 per cent.
- The number of labour force continued to rise in November 2022, with an increase of 0.2 per cent (+25.9 thousand persons) month-on-month to 16.71 million persons (October 2022: 16.68 million persons). Thus, the labour force participation rate (LFPR) during the month rose by 0.1 percentage points to register 69.8 per cent (October 2022: 69.7%).
- In November 2022, the number of persons outside labour force continued to decline with a reduction of 1.6 thousand persons (-0.02%) to 7.24 million persons (October 2022: 7.24 million persons). Housework/ family responsibilities were the main reasons for the outside labour force with 43.1 per cent, followed by schooling/ training with 41.3 per cent.

The full publication of the Labour Force Report, November 2022 can be downloaded through [eStatistik Portal](#).

**Dikeluarkan oleh:**

**JABATAN PERANGKAAN MALAYSIA**  
**10 Januari 2023**

**Contact person:**

Baharudin Mohamad  
 Public Relation Officer  
 Strategic Communication and International Division  
 Department of Statistics Malaysia  
 Tel : +603-8885 7942  
 Fax : +603-8888 9248  
 Email : baharudin[at]dosm.gov.my

**Copyright ©2025 Department of Statistics Malaysia Official Portal. All Rights Reserved.**