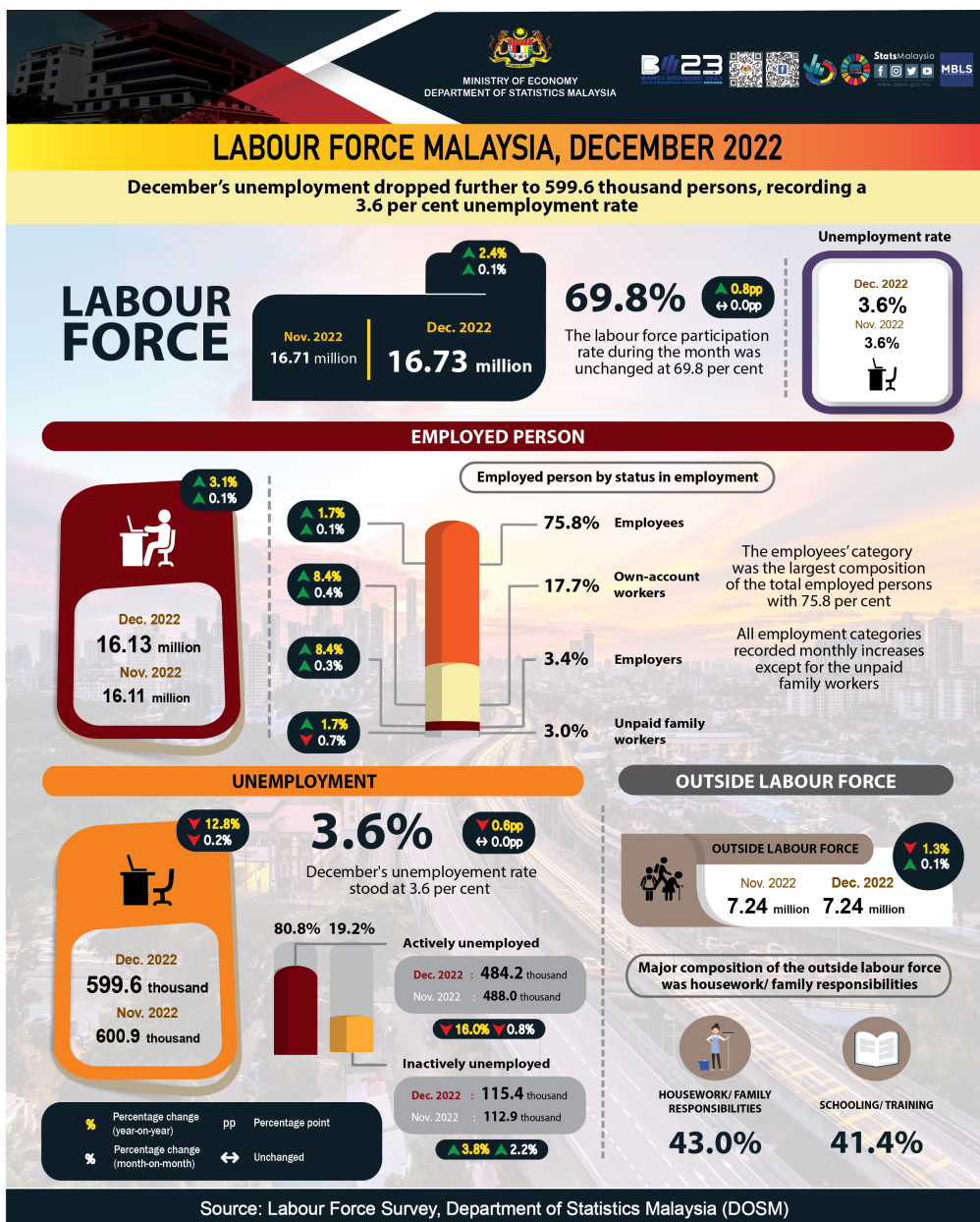
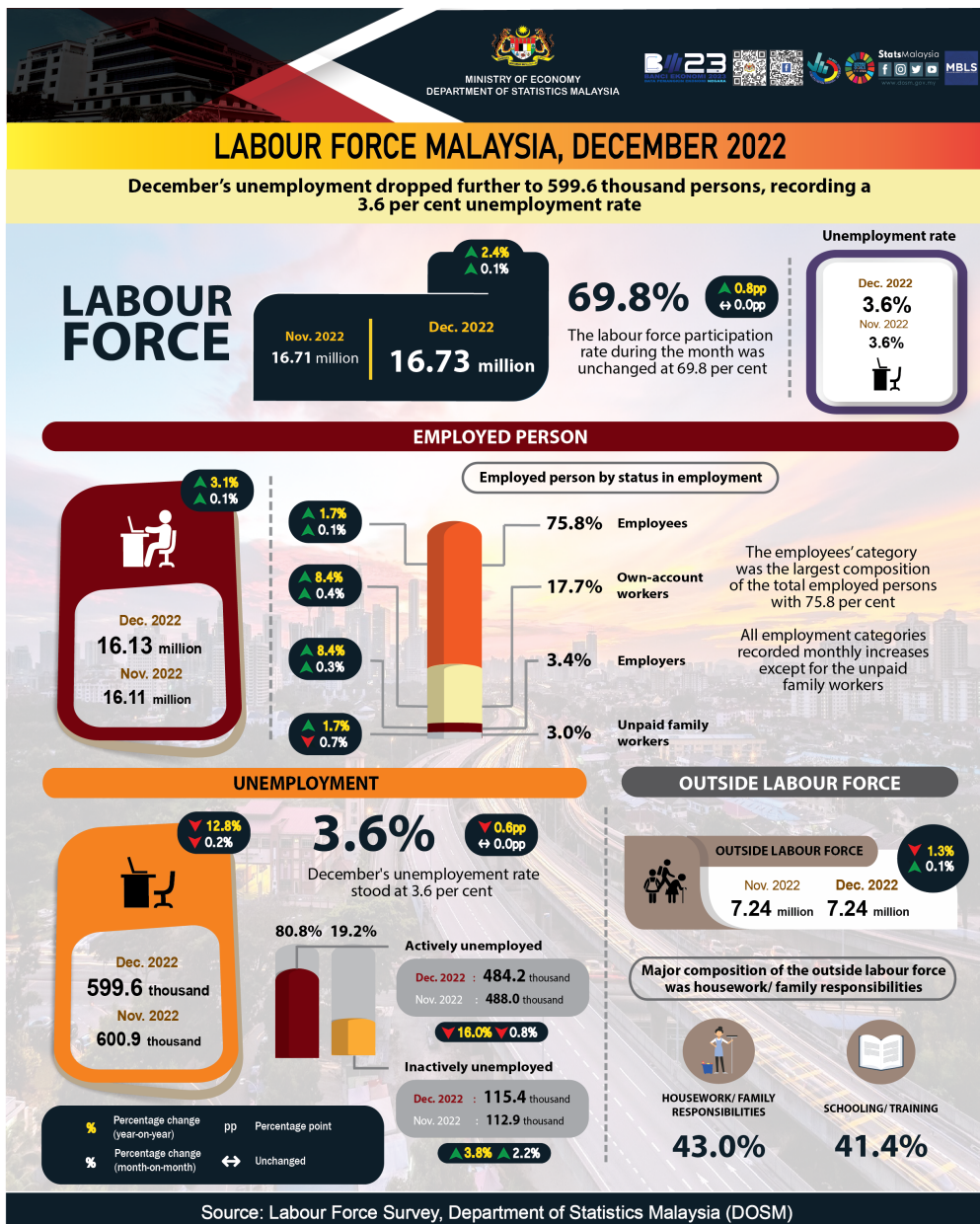




MINISTRY OF ECONOMY  
DEPARTMENT OF STATISTICS MALAYSIA

MONTHLY PRINCIPAL STATISTICS OF LABOUR FORCE





- The number of employed persons remained on a positive trend in December 2022, with a month-on-month increase of 0.1 per cent (+21.8 thousand persons) to 16.13 million persons (November 2022: 16.11 million persons). During the month, the employment-to-population ratio which indicates the ability of an economy to create employment was unchanged at 67.3 per cent.
- By economic sector, the number of employed persons in Services sector continued to increase, largely in Wholesale & retail trade; Food & beverage services and Information & communication activities. Similarly, Agriculture, Manufacturing, Construction, and Mining & quarrying sectors also maintained their positive trend in the number of employed persons.
- In December 2022, the employees' category continued to make up the largest percentage of the total employed persons, contributing 75.8 per cent. This category increased by 0.1 per cent (+10.9 thousand persons) to register 12.23 million persons during the month (November 2022: 12.21 million persons). Likewise, the own-account workers continued to increase by 0.4 per cent or equivalent to 12.8 thousand persons to 2.86 million persons (November 2022: 2.85 million persons).
- During the last month of 2022, the number of unemployed persons continued to fall, registering a negative growth of 0.2 per cent (-1.3 thousand persons) to record 599.6 thousand persons, which was below the level of 600 thousand persons for the first time since March 2020, as compared to

600.9 thousand persons in November 2022. December's unemployment rate stood at 3.6 per cent.

- In December 2022, the number of labour force remained its upward trend with a month-on-month rise of 0.1 per cent or equivalent to 20.6 thousand persons to record 16.73 million persons (November 2022: 16.71 million persons), while the labour force participation rate (LFPR) was unchanged at 69.8 per cent as compared to the previous month.
- The number of persons outside labour force during the month registered an addition of 3.8 thousand persons (+0.1%) to 7.24 million persons (November 2022: 7.24 million persons). The major composition of the outside labour force was housework/ family responsibilities 43.0 per cent, followed by schooling/ training with 41.4 per cent.

**Contact person:**

Baharudin Mohamad

Public Relation Officer

Strategic Communication and International Division

Department of Statistics Malaysia

Tel : +603-8885 7942

Fax : +603-8888 9248

Email : baharudin[at]dosm.gov.my

**Copyright ©2025 Department of Statistics Malaysia Official Portal. All Rights Reserved.**