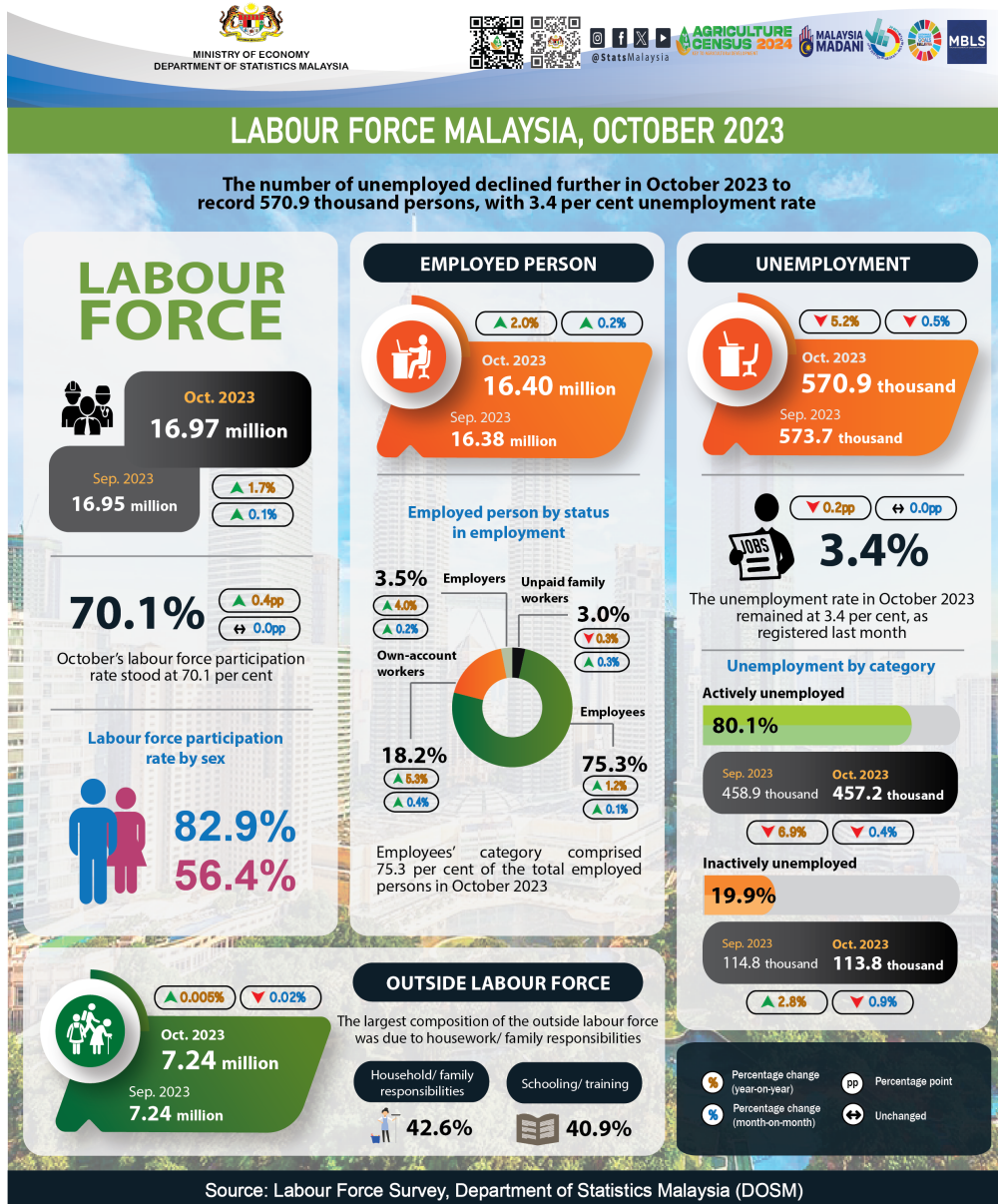




MINISTRY OF ECONOMY
DEPARTMENT OF STATISTICS MALAYSIA

MONTHLY PRINCIPAL STATISTICS OF LABOUR FORCE



- The improvement in the number of employed persons continued in October 2023 with a month-on-month increase of 0.2 per cent (+28.1 thousand persons) to register 16.40 million persons (September 2023: 16.38 million persons). In October 2023, the employment-to-population ratio which indicates the ability of an economy to create employment, was unchanged at 67.7 per cent as in the preceding month.
- In the economic sector, there is a consistent increase in the number of employed persons in the Services sector, notably in Wholesale & retail trade; Food & beverage services; and Transportation & storage activities. On the same note, the Manufacturing, Construction, Mining & quarrying sectors, as well as the Agriculture sector also posted rises in the number of employed persons in October 2023.
- During the month, the employees' category which was the largest composition of the total employed persons with a share of 75.3 per cent, posted a rise of 0.1 per cent or equivalent to 15.0 thousand persons to record 12.35 million persons (September 2023: 12.33 million persons). Likewise, the own-account workers category continued to increase, with an addition of 0.4 per cent (+10.8 thousand persons) to 2.99 million persons (September 2023: 2.97 million persons).
- In October 2023, the number of unemployed persons continued to trend down, with a reduction of 0.5 per cent or equivalent to 2.8 thousand persons to record 570.9 thousand persons (September 2023: 573.7 thousand persons). The unemployment rate during the month remained at 3.4 per cent, as registered last month.
- In October 2023, the number of labour force was in an upward trend, with an addition of 0.1 per cent or 25.3 thousand persons to 16.97 million persons (September 2023: 16.95 million persons). October's labour force participation rate (LFPR) stood at 70.1 per cent as of September 2023.
- The number of outside labour force during the month declined marginally by 0.02 per cent (-1.3 thousand persons) to 7.24 million persons (September 2023: 7.24 million persons). The largest composition of the outside labour force was due to housework/ family responsibilities (42.6%) and the schooling/ training category (40.9%).

The full publication of the Labour Force Report, October 2023 can be downloaded through eStatistik Portal.

Released by:

DEPARTMENT OF STATISTICS MALAYSIA
08 DECEMBER 2023

Contact person:

Baharudin Mohamad
Public Relation Officer
Strategic Communication and International Division
Department of Statistics Malaysia
Tel : +603-8885 7942
Fax : +603-8888 9248
Email : baharudin[at]dosm.gov.my

Copyright ©2025 Department of Statistics Malaysia Official Portal. All Rights Reserved.