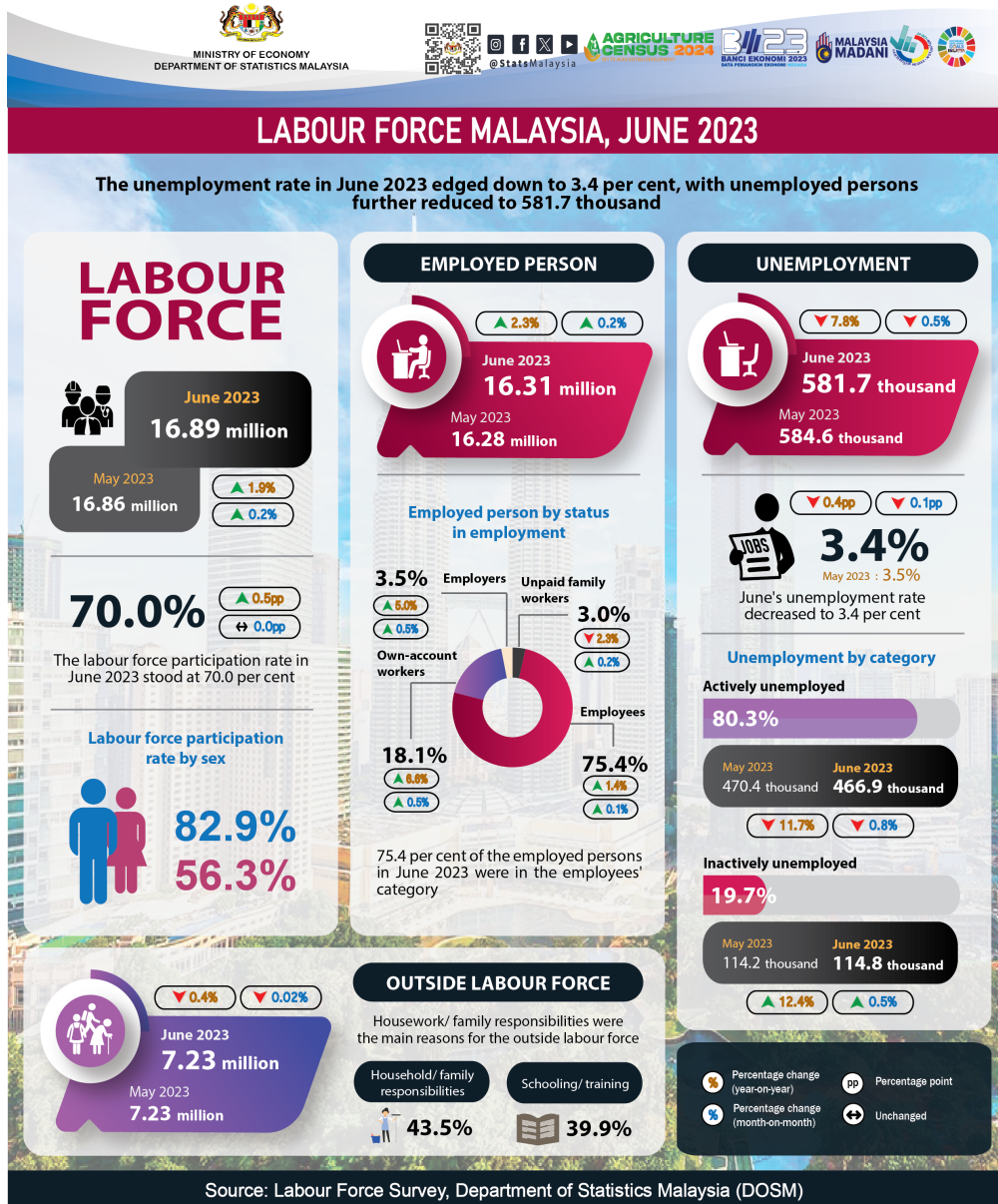




MINISTRY OF ECONOMY
DEPARTMENT OF STATISTICS MALAYSIA

MONTHLY PRINCIPAL STATISTICS OF LABOUR FORCE



- The number of employed persons in June 2023 continued to record a positive trend, with a month-on-month increase of 0.2 per cent (+28.3 thousand persons) to 16.31 million persons (May 2023: 16.28 million persons). The employment-to-population ratio which indicates the ability of an economy to create employment, held steady during the month at 67.6 per cent.
- Looking at the employed persons by economic sector, the Services sector remained on an upward trend, mainly in Food & beverage services; Wholesale & retail trade; and Transportation & storage activities. The number of employed persons in the Manufacturing, Construction, Mining & quarrying and Agriculture sectors also exhibited increases during the month.
- The employees' category made up the largest composition of the total employed persons, accounting for 75.4 per cent. In June 2023, this category posted a slight increase of 0.1 per cent (+11.2 thousand persons) to 12.30 million persons (May 2023: 12.29 million persons). On the same note, the number of own-account workers also continued to rise, with a surge of 13.5 thousand persons (+0.5%) to register 2.95 million persons (May 2023: 2.94 million persons).
- The number of unemployed persons during the month decreased further, with a reduction of 0.5 per cent or equivalent to 2.9 thousand persons, registering a lower number of unemployed at 581.7 thousand persons (May 2023: 584.6 thousand persons). June's unemployment rate edged down by 0.1 percentage points to 3.4 per cent (May 2023: 3.5%).
- The number of labour force in June 2023 strengthened further by 0.2 per cent month-on-month (+25.3 thousand persons) to record 16.89 million persons (May 2023: 16.86 million persons). The labour force participation rate (LFPR) during the month was unchanged at 70.0 per cent, as recorded last month.
- In June 2023, the number of persons outside the labour force continued to reduce, with a marginal decrease of 0.02 per cent (-1.1 thousand persons) to 7.23 million persons (May 2023: 7.23 million persons). The main reason for the outside labour force was housework/ family responsibilities with a contribution share of 43.5 per cent, followed by schooling/ training (39.9%).

The full publication of the Labour Force Report, June 2023 can be downloaded through eStatistik Portal.

Released by:

DEPARTMENT OF STATISTICS MALAYSIA

10 AUGUST 2023

Contact person:

Baharudin Mohamad
Public Relation Officer
Strategic Communication and International Division
Department of Statistics Malaysia
Tel : +603-8885 7942
Fax : +603-8888 9248
Email : baharudin[at]dosm.gov.my

Copyright ©2025 Department of Statistics Malaysia Official Portal. All Rights Reserved.