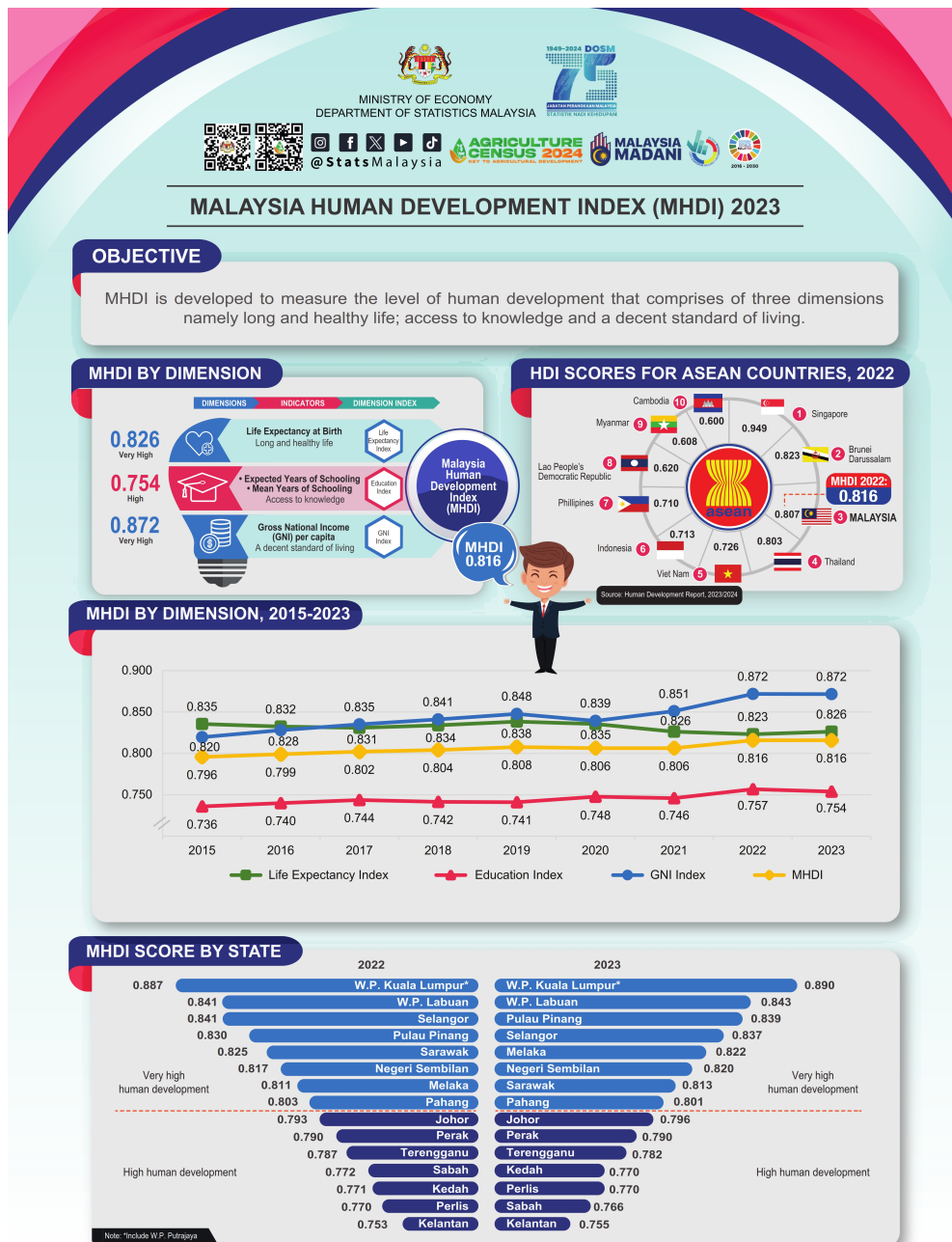




MINISTRY OF ECONOMY
DEPARTMENT OF STATISTICS MALAYSIA

MALAYSIA HUMAN DEVELOPMENT INDEX (MHDI), 2023



INTRODUCTION

The Malaysia Human Development Index (MHDI) is an index developed by the Department of Statistics Malaysia to evaluate the level of human development which is the main criteria in measuring the progress of a country aside from economic aspects. MHDI comprises three dimensions namely long and healthy life, access to knowledge and a decent standard of living.

PERFORMANCE OF MHDI

The performance of the MHDI score in 2023 was at a very high level of development with a score of 0.816. An analysis by dimension index showed that the highest index score recorded in 2023 was the Gross National Income (GNI) Index with a score of 0.872 (2022: 0.872), followed by the Life Expectancy Index of 0.826 (2022: 0.823) and the Education Index of 0.754 (2022: 0.757). All indices were at a very high level of development except the Education Index at a high level.

Table 1: Malaysia Human Development Index, 2022 and 2023

| <i>Dimension Index</i> | <i>2022</i> | <i>2023</i> | <i>2022-2023</i> | |
|---|--------------|--------------|---------------------------|-------------------|
| | | | <i>Index Point Change</i> | <i>Growth (%)</i> |
| <i>Life Expectancy Index</i> | 0.823 | 0.826 | 0.003 | 0.4 |
| <i>Education Index</i> | 0.757 | 0.754 | -0.003 | -0.4 |
| <i>Gross National Income (GNI) Index</i> | 0.872 | 0.872 | 0.000 | 0.0 |
| <i>Malaysia Human Development Index (MHDI)</i> | 0.816 | 0.816 | 0.000 | 0.0 |

PERFORMANCE OF MHDY BY STATE

Eight states were at a very high level of development in 2023. The state with the highest MHDY score is W.P. Kuala Lumpur* with a score of 0.890, followed by W.P. Labuan (0.843), Penang (0.839), Selangor (0.837), Melaka (0.822), Negeri Sembilan (0.820), Sarawak (0.813), and Pahang (0.801). Meanwhile, the states that registered a high level of development were Johor (0.796), Perak (0.790), Terengganu (0.782), Kedah (0.770), Perlis (0.770), Sabah (0.766) and Kelantan (0.755).

Chart 1: Malaysia Human Development Index by State, 2022 and 2023



Note: *Include W.P. Putrajaya

Contact person:

Baharudin Mohamad
 Public Relation Officer
 Strategic Communication and International Division
 Department of Statistics Malaysia
 Tel : +603-8885 7942
 Fax : +603-8888 9248
 Email : baharudin[at]dosm.gov.my

Copyright ©2025 Department of Statistics Malaysia Official Portal. All Rights Reserved.