



MINISTRY OF ECONOMY  
DEPARTMENT OF STATISTICS MALAYSIA

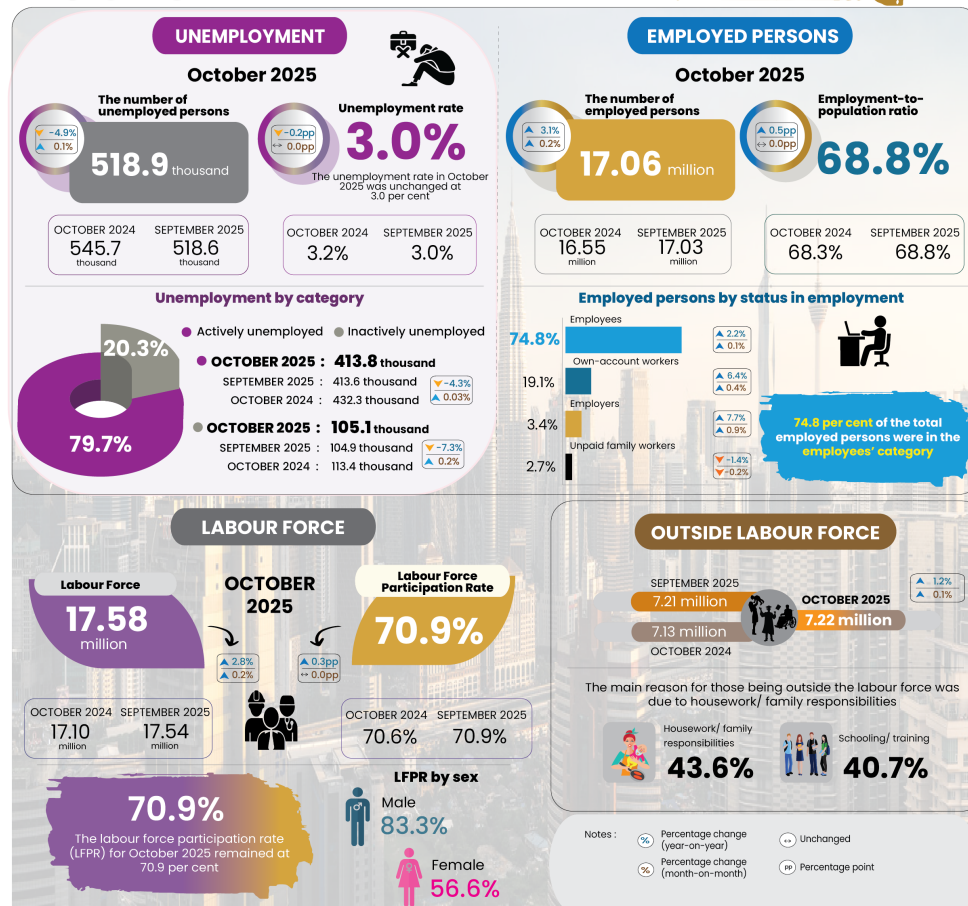
LABOUR FORCE STATISTICS, OCTOBER 2025



MINISTRY OF ECONOMY  
DEPARTMENT OF STATISTICS MALAYSIA

**MALAYSIA  
LABOUR FORCE,  
OCTOBER 2025**

The unemployment rate remained at **3.0 per cent** in October 2025, recording 518.9 thousand unemployed



@StatsMalaysia



- The number of **employed persons** continued its upward trend in October 2025, posting an increase of **0.2 per cent (+33.8 thousand persons)** to **17.06 million persons**, compared to 17.03 million persons in September 2025. The **employment-to-population ratio**, which indicates the ability of an economy to create employments, held steady at **68.8 per cent** in October 2025, unchanged from September 2025.
- The employment in the Services sector continued to rise steadily in October 2025, significantly driven by Accommodation and food & beverage services; Wholesale and retail trade; as well as Information and communication activities. Similarly, the Agriculture, Manufacturing, and Construction sectors also recorded increases in the number of employed persons, while the employment in the Mining & quarrying sector posted decreases.
- In October 2025, **74.8 per cent** of the total employed persons were in the **employees'** category. This category registered a marginal increase of **0.1 per cent (+17.2 thousand persons)** to record **12.76 million persons** compared to 12.74 million persons in September 2025. The number of **own-account workers** also continued to edge up, rising by **0.4 per cent (+11.9 thousand persons)** to **3.25 million persons**, as against 3.24 million persons in September 2025.
- The number of **unemployed persons** in October 2025 increased slightly by **0.1 per cent (+0.3 thousand persons)** to **518.9 thousand persons** from 518.6 thousand persons last month. The **unemployment rate** during the month was unchanged at **3.0 per cent** as recorded in September 2025.
- The **labour force** continued its upward trajectory in October 2025, rose by **0.2 per cent (+34.2 thousand persons)** month-on-month to **17.58 million persons** (September 2025: 17.54 million persons). October's **labour force participation rate (LFPR)** remained at **70.9 per cent**, as of last month.
- In October 2025, the number of persons **outside the labour force** was on an upward trend, rising by **0.1 per cent (+8.9 thousand persons)**, reaching **7.22 million persons** compared to 7.21 million in September 2025. The main reason for those being outside the labour force was due to **housework/ family responsibilities**, making up **43.6 per cent**. The second-largest group consisted of those in **schooling/ training** at **40.7 per cent**.

The full publication of the Labour Force Report, October 2025 can be downloaded through eStatistik Portal

**Released by:**

**DEPARTMENT OF STATISTICS MALAYSIA**

**10th December 2025**

**Contact person:**

Baharudin Mohamad

Public Relation Officer

Strategic Communication and International Division

Department of Statistics Malaysia

Tel : +603-8090 4681

Fax : +603-8888 9248

Email : [baharudin\[at\]dosm.gov.my](mailto:baharudin[at]dosm.gov.my)

**Copyright ©2025 Department of Statistics Malaysia Official Portal. All Rights Reserved.**