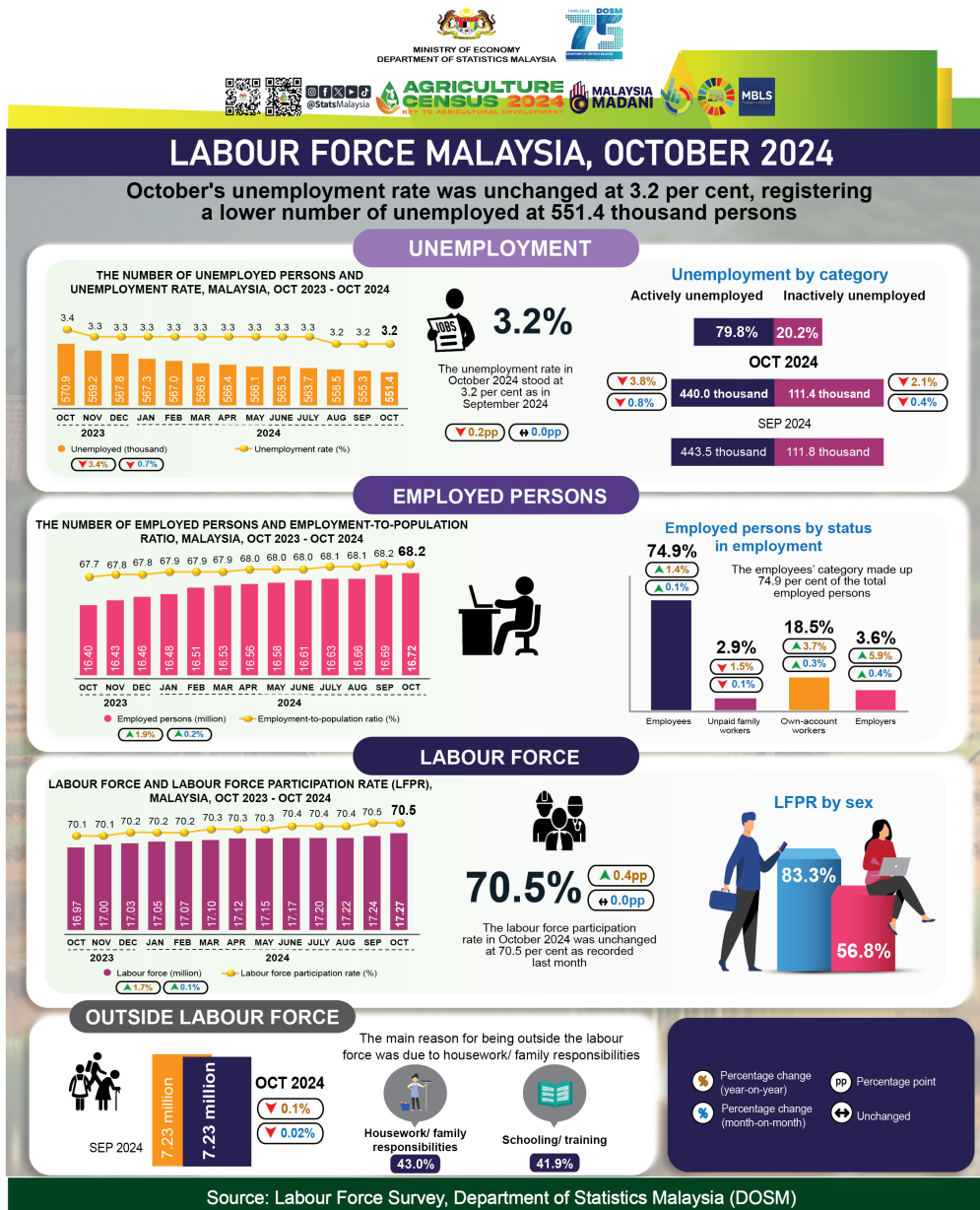




MINISTRY OF ECONOMY
DEPARTMENT OF STATISTICS MALAYSIA

LABOUR FORCE STATISTICS, OCTOBER 2024



- In October 2024, the number of **employed persons** continued its upward trend, registering a month-on-month increase of **0.2 per cent (+28.5 thousand persons)** to **16.72 million persons** (September 2024: 16.69 million persons). The **employment-to-population ratio**, which indicates the ability of an economy to create employment, was unchanged at **68.2 per cent** as in the preceding month.
- In terms of the economic sector, the number of employed persons in the Services sector steadily increased, largely in Wholesale & retail trade; Food & beverage services and Transportation & storage activities. On the same note, the Manufacturing, Construction, Mining & quarrying and Agriculture sectors also registered positive employment growth during the month.
- Out of the total employed persons in October 2024, **74.9 per cent** were in the **employees'** category. This category posted a slight increase of **0.1 per cent (+16.3 thousand persons)** to **12.53 million persons** (September 2024: 12.51 million persons). Similarly, the **own-account workers** category also rose with an addition of **0.3 per cent (+10.4 thousand persons)** to **3.10 million persons** (September 2024: 3.09 million persons).
- In October 2024, the number of **unemployed** fell by **0.7 per cent (-3.9 thousand persons)** month-on-month to **551.4 thousand persons** (September 2024: 555.3 thousand persons). The **unemployment rate** stood at **3.2 per cent** during the month, as in September.
- During the month, the number of **labour force** posted a continuous increase in October 2024, rising by **0.1 per cent (+24.6 thousand persons)** from 17.24 million persons in September 2024 to record **17.27 million persons**. The **labour force participation rate (LFPR)** remained unchanged from the previous month at **70.5 per cent**.
- In October 2024, the number of persons **outside the labour force** showed a slight decline of **0.02 per cent (-1.2 thousand persons)** to **7.23 million persons** (September 2024: 7.23 million persons). **Housework/ family responsibilities** were the main reason for the outside labour force, which contributed **43.0 per cent** of the total, while the **schooling/ training** category ranked second at **41.9 per cent**.

The full publication of the Labour Force Report, October 2024 can be downloaded through eStatistik Portal

Released by:

DEPARTMENT OF STATISTICS MALAYSIA

09 DECEMBER 2024

Contact person:

Baharudin Mohamad

Public Relation Officer

Strategic Communication and International Division

Department of Statistics Malaysia

Tel : +603-8885 7942

Fax : +603-8888 9248

Email : baharudin[at]dosm.gov.my

Copyright ©2025 Department of Statistics Malaysia Official Portal. All Rights Reserved.