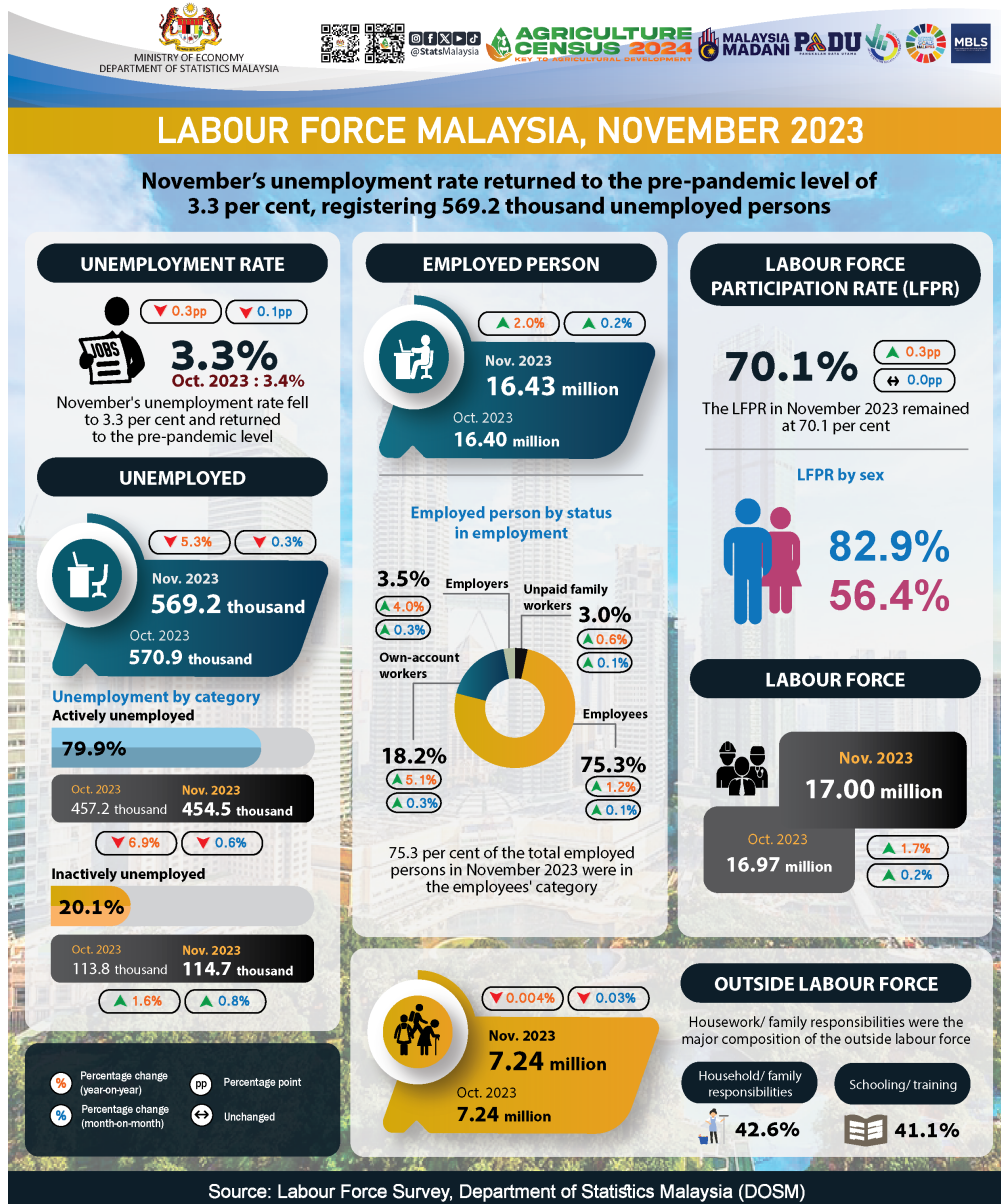




MINISTRY OF ECONOMY
DEPARTMENT OF STATISTICS MALAYSIA

LABOUR FORCE STATISTICS, NOVEMBER 2023



- In November 2023, the number of employed persons continued on an upward trend, registering a month-on-month increase of **0.2 per cent (+27.9 thousand persons)** to **16.43 million persons** (October 2023: 16.40 million persons). The **employment-to-population ratio**, which indicates the ability of an economy to create employment, increased to **67.8 per cent** in November 2023 compared to the previous month (October 2023: 67.7%).
- Across various economic sectors, the number of employed persons in the Services sector remained increased, particularly in Information & communication; Food & beverage services; and Transportation & storage activities. Similarly, the Manufacturing, Construction, and Mining & quarrying sector also showed rises in the number of employed persons in November 2023. Meanwhile, the Agriculture sector recorded a decline in the number of employed persons during the same month.
- Out of the total employed persons in November 2023, **75.3 per cent** were in the **employees' category**. This category posted a slight increase of **0.1 per cent (+16.2 thousand persons)** to **12.37 million persons** (October 2023: 12.35 million persons). On the same note, the **own-account workers** category also rose to **2.99 million persons** (October 2023: 2.99 million persons), with an addition of **0.3 per cent (+9.4 thousand persons)**. This group primarily consists mostly of daily income earners working as small business operators such as retailers, hawkers, sellers in markets and stalls, as well as smallholders.
- During the month, the number of **unemployed persons** continued to be on a declining trend, with a reduction of **0.3 per cent (-.17 thousand persons)** to **569.2 thousand persons** (October 2023: 570.9 thousand persons). November's **unemployment rate** fell **3.3 per cent** and returned to the pre-pandemic level, compared to 3.4 per cent recorded last month.
- The number of **labour force** continued to trend up in November 2023, with a monthly increases of **0.2 per cent (+26.3 thousand persons)** to **17.0 million persons** (October 2023: 16.97 million persons). The **labour force participation rate (LFPR)** during the month was unchanged at **70.1 per cent**.
- In November 2023, the number of persons **outside labour force** was on a downward trend, with a reduction of **2.2 thousand persons (-0.03%)** to **7.24 million persons** (October 2023: 7.24 million persons). **Housework/ family responsibilities** were the main reasons for the outside labour force with **42.6 per cent**, followed by **schooling/ training (41.1%)**.

The full publication of the Labour Force Report, November 2023 can be downloaded through eStatistik Portal

Released by:

DEPARTMENT OF STATISTICS MALAYSIA

10 JANUARY 2024

Contact person:

Baharudin Mohamad

Public Relation Officer

Strategic Communication and International Division

Department of Statistics Malaysia

Tel : +603-8885 7942

Fax : +603-8888 9248

Email : baharudin[at]dosm.gov.my

