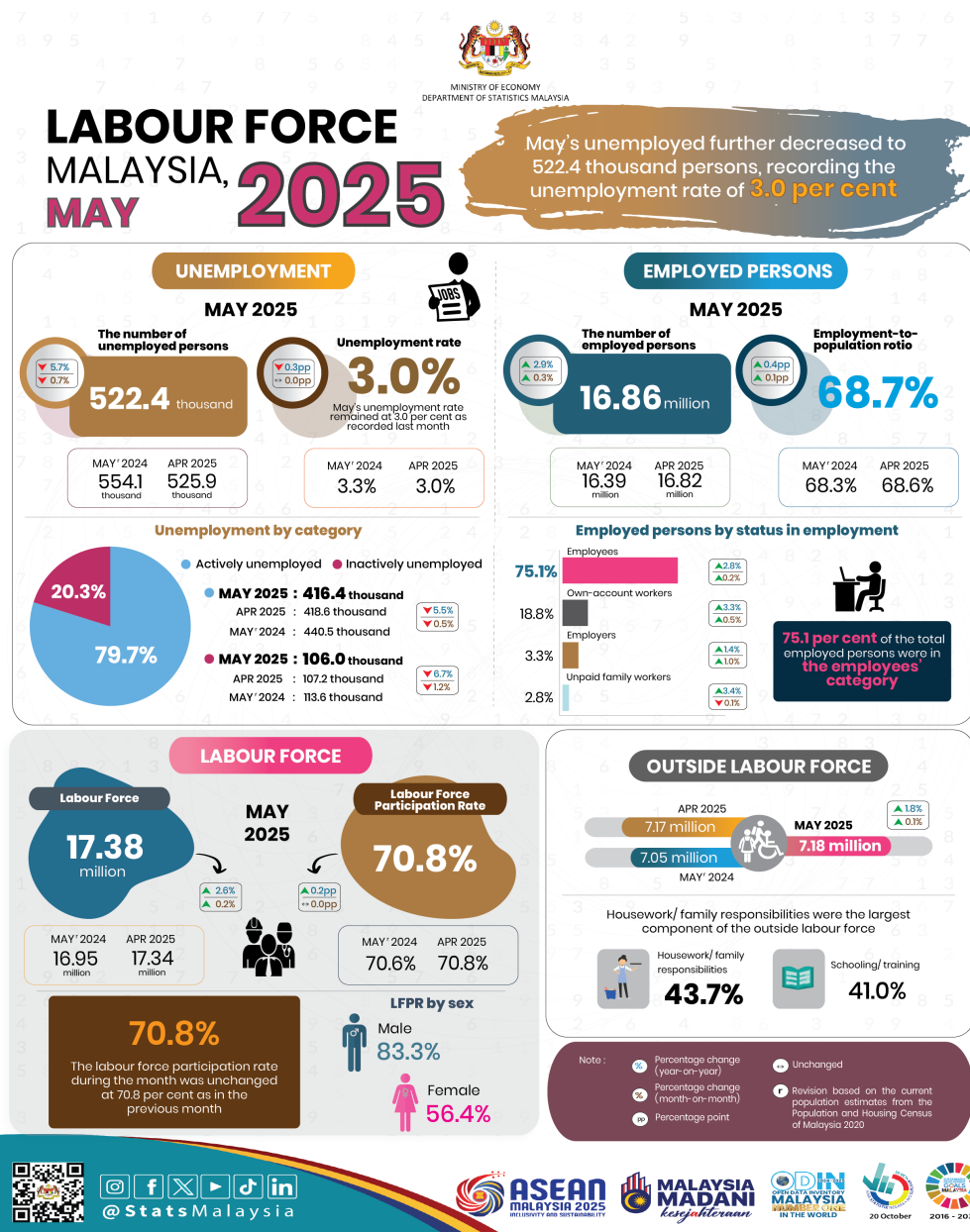




MINISTRY OF ECONOMY
DEPARTMENT OF STATISTICS MALAYSIA

LABOUR FORCE STATISTICS, MAY 2025



- In May 2025, the number of **employed persons** was on an uptrend, increasing by **0.3 per cent (+43.8 thousand persons)** to reach **16.86 million persons** as against the prior month (April 2025: 16.82 million persons). The **employment-to-population ratio**, a key indicator of an economy's ability to create employment, increased by **0.1 percentage points** to **68.7 per cent** (April 2025: 68.6 per cent).
- Looking at the performance of employment by economic sectors, the number of employed persons in the Services sector showed a consistent upward trend, particularly in Accommodation and food & beverage services; Wholesale and retail trade; and Transportation & storage activities. On the same note, the Manufacturing, Construction, Agriculture, and Mining & quarrying sectors also recorded an increasing number of employed persons during the month.
- In May 2025, **75.1 per cent** of the total employed persons were in the **employees'** category. This category posted an increase of **0.2 per cent (+24.6 thousand persons)** to **12.66 million persons** compared to 12.63 million in April 2025. A similar trend was also observed in the number of **own-account workers**, which rose by **0.5 per cent (+14.2 thousand persons)** to **3.18 million persons** (April 2025: 3.16 million persons).
- The number of **unemployed persons** in May 2025 decreased further, dropping by **0.7 per cent (-3.5 thousand persons)** to **522.4 thousand persons** (April 2025: 525.9 thousand persons). May's **unemployment rate** remained at **3.0 per cent** as recorded last month.
- In May 2025, the number of the **labour force** continued its upward trend, rising by **0.2 per cent (+40.3 thousand persons)** month-on-month to **17.38 million persons** (April 2025: 17.34 million persons). The **labour force participation rate (LFPR)** during the month was unchanged at **70.8 per cent** as in the previous month.
- During the month, the number of persons **outside the labour force** increased by **0.1 per cent (+7.4 thousand persons)** to **7.18 million persons** compared to 7.17 million persons in April 2025. **Housework/ family responsibilities** were the largest component of the outside labour force, with a share of **43.7 per cent**, followed by the **schooling/ training** category at **41.0 per cent**.

The full publication of the Labour Force Report, May 2025 can be downloaded through eStatistik Portal

Released by:

DEPARTMENT OF STATISTICS MALAYSIA

10 JULY 2025

Contact person:

Baharudin Mohamad

Public Relation Officer

Strategic Communication and International Division

Department of Statistics Malaysia

Tel : +603-8090 4681

Fax : +603-8888 9248

Email : baharudin[at]dosm.gov.my

Copyright ©2025 Department of Statistics Malaysia Official Portal. All Rights Reserved.