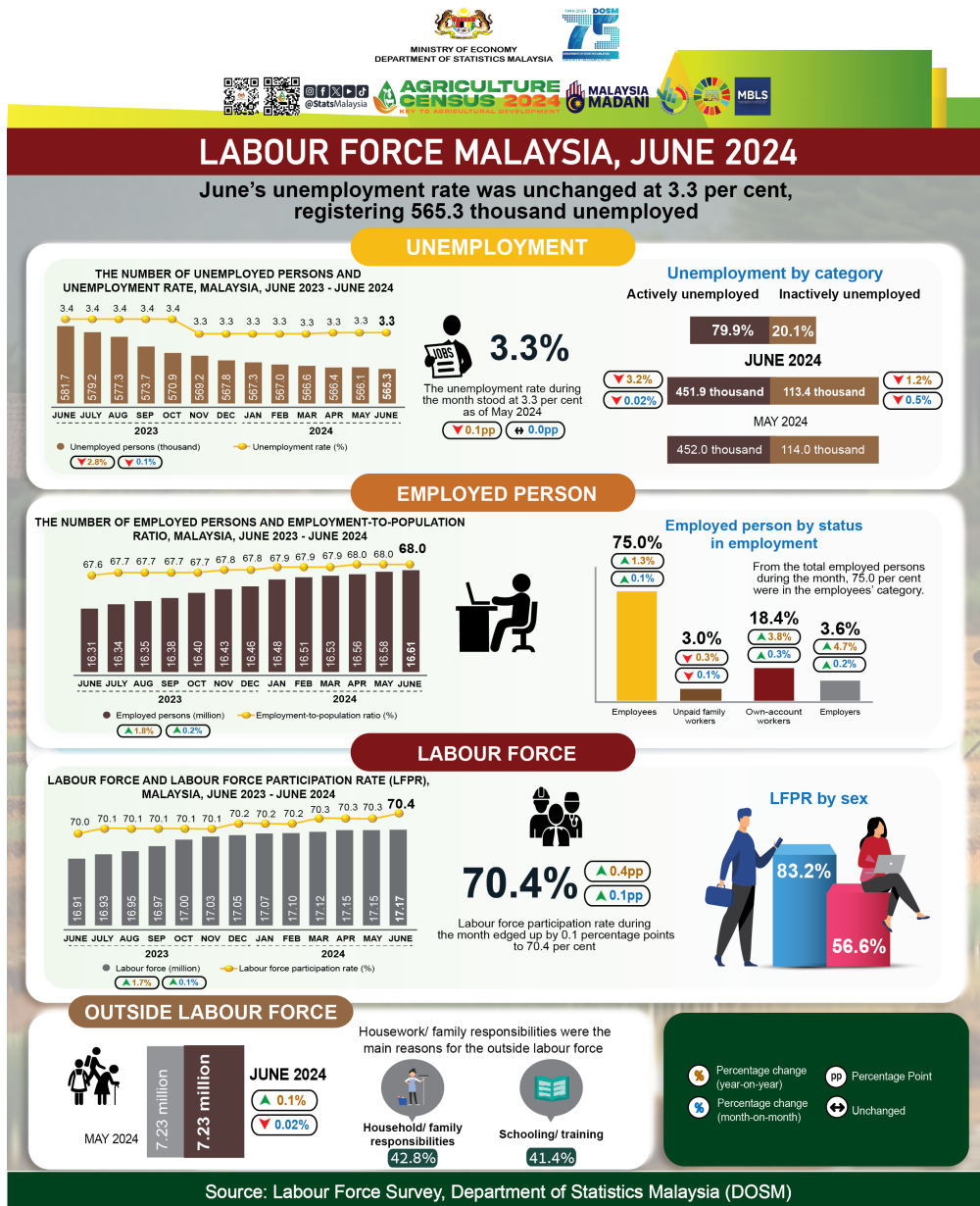




MINISTRY OF ECONOMY  
DEPARTMENT OF STATISTICS MALAYSIA

## LABOUR FORCE STATISTICS, JUNE 2024



- The number of **employed persons** continued to trend up in June 2024, increasing by **0.2 per cent (+25.9 thousand persons)** to **16.61 million persons** (May 2024: 16.58 million persons). The **employment-to-population ratio**, which indicates the ability of the economy to create employment, remained at **68.0 per cent** in June 2024 as in the previous month.
- By economic sector, the Services sector continued to exhibit increases in the number of employed persons, especially in Wholesale & retail trade; Food & beverage services; and Information & communication activities. A similar trend of employed persons was also observed in the Manufacturing, Construction, Mining & quarrying and Agriculture sectors.
- From the total employed persons during the month, **75.0 per cent** were in the **employees'** category. This category registered a monthly growth of **0.1 per cent (+15.3 thousand persons)** to **12.46 million persons** (May 2024: 12.44 million persons). On the same note, the **own-account workers** category remained on a positive trend with a **0.3 per cent increase (+9.7 thousand persons)** to **3.06 million persons** (May 2024: 3.05 million persons).
- The number of **unemployed persons** in June 2024 fell by **0.1 per cent (-0.8 thousand persons)** month-on-month to **565.3 thousand persons** (May 2024: 566.1 thousand persons). The **unemployment rate** during the month stood at **3.3 per cent** as of May 2024.
- In June 2024, the number of **labour force** continued to register month-on-month increase, rising by **0.1 per cent (+25.2 thousand persons)** to **17.17 million persons** (May 2024: 17.15 million persons). Therefore, the **labour force participation rate (LFPR)** during the month edged up by **0.1 percentage points** to **70.4 per cent** (May 2024: 70.3%).
- The number of persons **outside the labour force** declined slightly by **0.02 per cent** or **1.2 thousand persons** to **7.23 million persons** in June 2024 (May 2024: 7.23 million persons). **Housework/ family responsibilities** were the main reasons for the outside labour force, with **42.8 per cent**, followed by the **schooling/ training** reason at **41.4 per cent**.

The full publication of the Labour Force Report, June 2024 can be downloaded through eStatistik Portal

**Released by:**

**DEPARTMENT OF STATISTICS MALAYSIA**

**09 AUGUST 2024**

**Contact person:**

Baharudin Mohamad

Public Relation Officer

Strategic Communication and International Division

Department of Statistics Malaysia

Tel : +603-8885 7942

Fax : +603-8888 9248

Email : baharudin[at]dosm.gov.my

**Copyright ©2025 Department of Statistics Malaysia Official Portal. All Rights Reserved.**