



MINISTRY OF ECONOMY
DEPARTMENT OF STATISTICS MALAYSIA

LABOUR FORCE STATISTICS, JANUARY 2024

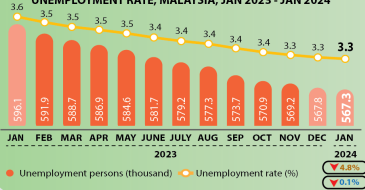


LABOUR FORCE MALAYSIA, JANUARY 2024

January's unemployment rate stood at 3.3 per cent, with 567.3 thousand unemployed

UNEMPLOYMENT

THE NUMBER OF UNEMPLOYED PERSONS AND UNEMPLOYMENT RATE, MALAYSIA, JAN 2023 - JAN 2024



3.3%

January's unemployment rate remained at 3.3 per cent the same as in the previous month

▼ 0.3pp ↔ 0.0pp

Unemployment by category

Actively unemployed Inactively unemployed

79.8% 20.2%

JAN 2024

▼ 6.0% ▲ 0.2%
▼ 0.2% ▲ 0.5%

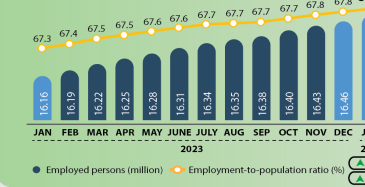
452.5 thousand 114.7 thousand

DEC 2023

453.6 thousand 114.2 thousand

EMPLOYED PERSON

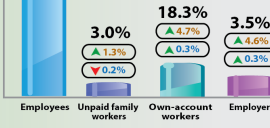
THE NUMBER OF EMPLOYED PERSONS AND EMPLOYMENT-TO-POPULATION RATIO, MALAYSIA, JAN 2023 - JAN 2024



Employed person by status in employment

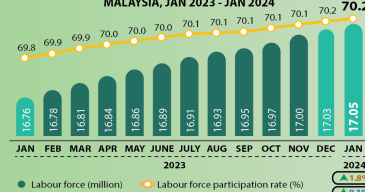
75.2%
▲ 1.3% ▲ 0.1%

75.2 per cent of the total employed persons were in the employees' category



LABOUR FORCE

LABOUR FORCE AND LABOUR FORCE PARTICIPATION RATE (LFPR), MALAYSIA, JAN 2023 - JAN 2024

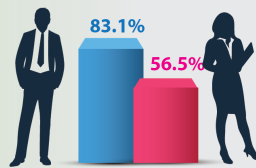


70.2%

Labour force participation rate during the month was unchanged at 70.2 per cent, as in the preceding month

▲ 0.4pp ↔ 0.0pp

LFPR by sex



OUTSIDE LABOUR FORCE



DIS 2023



JAN 2024

▼ 0.1%

▼ 0.01%

The major composition of the outside labour force was housework/ family responsibilities



Household/ family responsibilities

42.5%



Schooling/ training

40.8%

Percentage change (year-on-year) PP Percentage point
Percentage change (month-on-month) ↔ Unchanged

Source: Labour Force Survey, Department of Statistics Malaysia (DOSM)

- In January 2024, the number of **employed persons** continued in an upward trend, with a rise of **0.2 per cent (+25.3 thousand persons)** from the previous month to record **16.48 million persons** (December 2023: 16.46 million). During the month, the **employment-to-population ratio**, which denotes the ability of an economy to create employment, rose by **0.1 percentage points to 67.9 per cent** (December 2023: 67.8%).
- By economic sector, the number of employed persons in the Services sector remained increasing, notably in Wholesale & retail trade; Food & beverage services; and Transportation & storage activities. A similar trend was also observed in the number of employed persons in the Manufacturing, Construction and Mining & quarrying sectors in January 2024. The number of employed persons in the Agriculture sector rebounded during the month compared to last month.
- The majority of employed persons in January 2024 were in the **employees'** category, constituting **75.2 per cent**. This category saw a marginal increase of **0.1 per cent (+14.2 thousand persons)**, totaling **12.39 million persons** compared to 12.38 million in December 2023. On the same note, the **own-account workers** category continued its increasing trend during the month, rising by **0.3 per cent (+10.3 thousand persons)** to **3.01 million persons** (December 2023: 3.0 million persons).
- In January 2024, the number of **unemployed persons** decreased further, with a marginal drop of **0.1 per cent (-0.5 thousand persons)** to **567.3 thousand persons** (December 2023: 567.8 thousand persons). January's **unemployment rate** remained at **3.3 per cent** as recorded in the previous month.
- The **labour force** in January 2024 saw further enhancement, increasing by **0.1 per cent (+24.8 thousand persons)** to **17.05 million persons** compared to the previous month (December 2023: 17.03 million persons). The **labour force participation rate (LFPR)** during the month was unchanged at **70.2 per cent**, as in the preceding month.
- The number persons of **outside the labour force** posted a marginal decline of **0.01 per cent to 7.23 million persons** in January 2024 compared to the previous month (December 2023: 7.23 million persons). The major composition of those outside the labour force was **housework/ family responsibilities**, accounting for **42.5 per cent**, while **schooling/ training** ranked second with **40.8 per cent**.

The full publication of the Labour Force Report, January 2024 can be downloaded through eStatistik Portal

Contact person:

Baharudin Mohamad
 Public Relation Officer
 Strategic Communication and International Division
 Department of Statistics Malaysia
 Tel : +603-8885 7942
 Fax : +603-8888 9248
 Email : baharudin[at]dosm.gov.my

Copyright ©2025 Department of Statistics Malaysia Official Portal. All Rights Reserved.