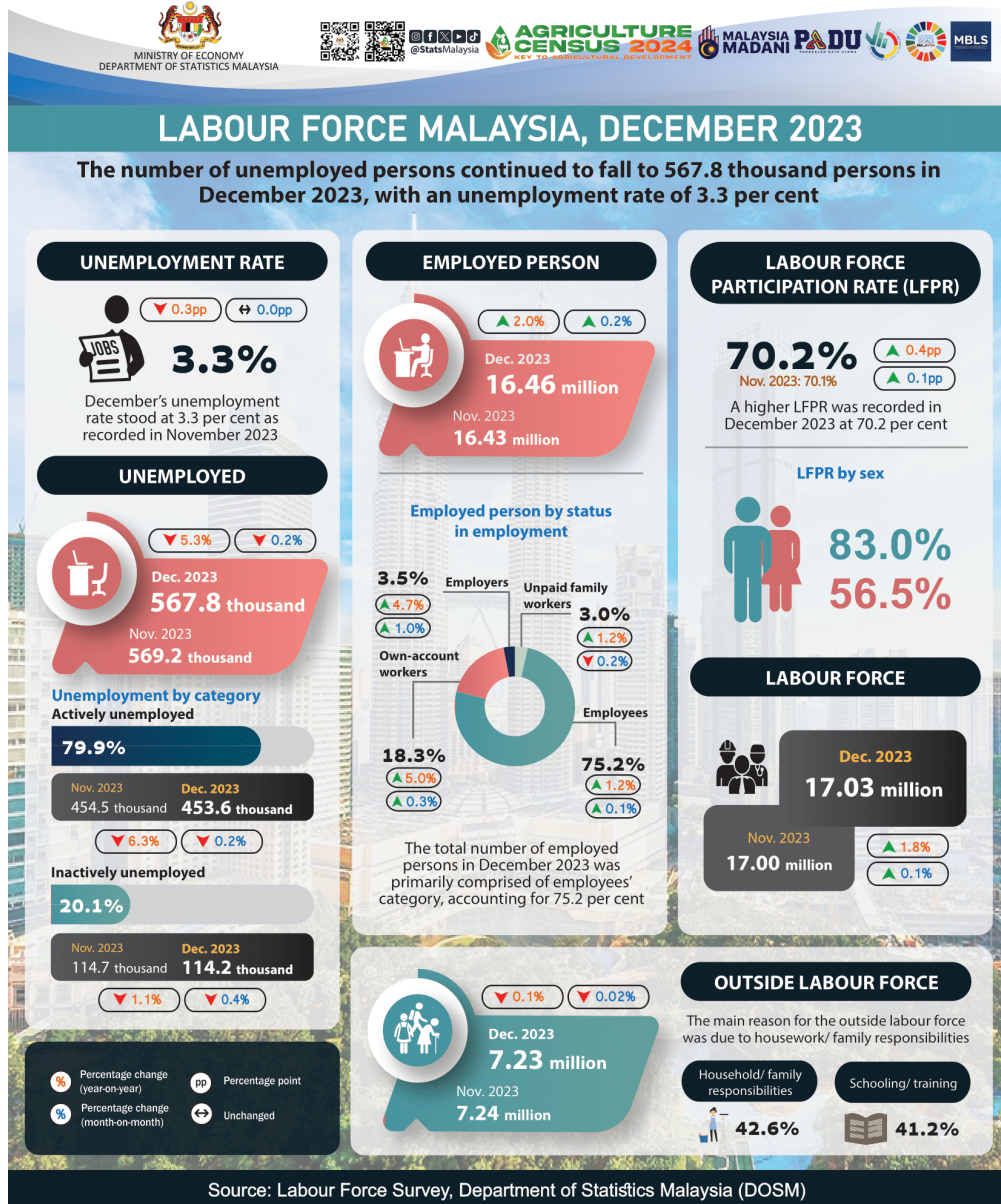




MINISTRY OF ECONOMY  
DEPARTMENT OF STATISTICS MALAYSIA

LABOUR FORCE STATISTICS, DECEMBER 2023



- The number of **employed persons** in December 2023 continued to show consistent growth and rose by **0.2 per cent (+26.6 thousand persons)**, reaching a total of **16.46 million persons** (November 2023: 16.43 million persons). In December, the **employment-to-population ratio**, which indicates the ability of an economy to create employment, remained at **67.8 per cent** as in the previous month (November 2023: 67.8%).
- In terms of economic sectors, Services sector continued to record a rise in the number of employed persons, notably in Information & communication; Food & beverage services; and Transportation & storage activities. A similar trend in the number of employed persons was also observed in the Manufacturing, Construction and Mining & quarrying sectors in December 2023. In the meantime, the number of employed persons in the Agriculture sector continued to decline during the month.
- The total number of employed persons in December 2023 was primarily comprised of **employees'** category, accounting for **75.2 per cent**. This category went up by **0.1 per cent (+12.3 thousand persons)** to **12.38 million persons** (November 2023: 12.37 million persons). Similarly, the rising trend was also seen in the **own-account workers** category, which increased by **0.3 per cent (+9.5 thousand persons)** to **3.0 million persons** (November 2023: 2.99 million persons).
- The number of **unemployed persons** in December 2023 decreased further, registering a month-on-month decline of **0.2 per cent (-1.4 thousand persons)** to **567.8 thousand persons** from 569.2 thousand persons last month. The **unemployment rate** in December stood at **3.3 per cent** as recorded in November 2023.
- The number of **labour force** remained increasing in December 2023, with an addition of **0.1 per cent (+25.1 thousand persons)** to register **17.03 million persons** (November 2023: 17.0 million persons). Accordingly, a higher **labour force participation rate (LFPR)** was recorded during the month at **70.2 per cent** (November 2023: 70.1%).
- The number of persons **outside the labour force** during the month registered a decline of **1.1 thousand persons (-0.02%)** to **7.23 million persons** (November 2023: 7.24 million persons). The main reason for the outside labour force was due to **housework/ family responsibilities** with **42.6 per cent**, followed by **schooling / training (41.2%)**.

**Contact person:**

Baharudin Mohamad  
 Public Relation Officer  
 Strategic Communication and International Division  
 Department of Statistics Malaysia  
 Tel : +603-8885 7942  
 Fax : +603-8888 9248  
 Email : baharudin[at]dosm.gov.my

**Copyright ©2025 Department of Statistics Malaysia Official Portal. All Rights Reserved.**