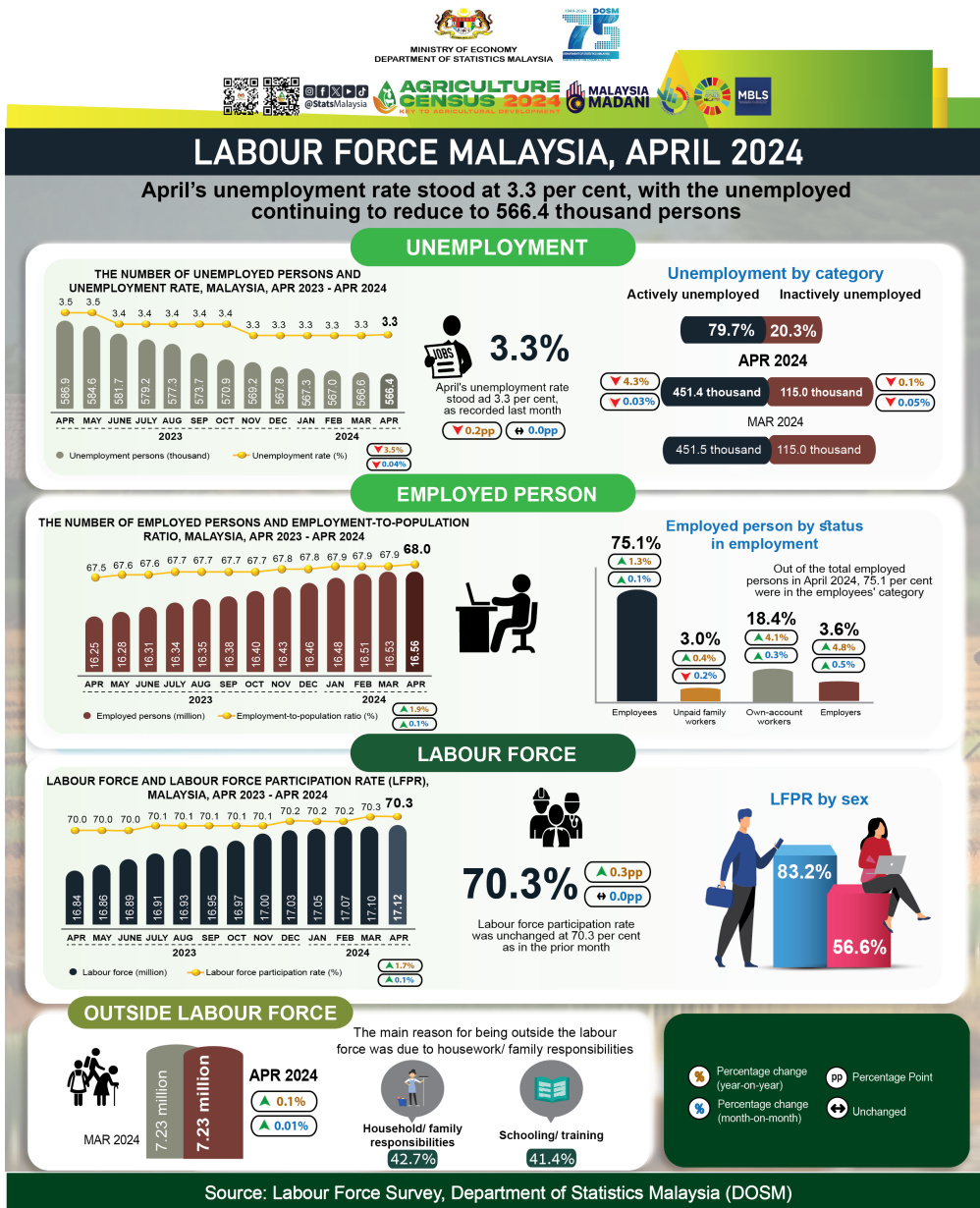




MINISTRY OF ECONOMY
DEPARTMENT OF STATISTICS MALAYSIA

LABOUR FORCE STATISTICS, APRIL 2024



Source: Labour Force Survey, Department of Statistics Malaysia (DOSM)

- In April 2024, the number of **employed persons** continued to record increases, with a month-on-month growth of **0.1 per cent (+23.5 thousand persons)** to **16.56 million persons** compared to the previous month (March 2024: 16.53 million persons). The **employment-to-population ratio**, which indicates the ability of the economy to create employment, rose by **0.1 percentage points** to **68.0 per cent** in April 2024 (March 2024: 67.9%).
- As for the employment by the economic sector, the Services sector continued to record a rise in the number of employed persons, mainly in the Information & communication, Food & beverage services and Transportation & storage activities. A similar trend in the number of employed persons was also observed in the Manufacturing, Construction, Mining & quarrying sectors, as well as the Agriculture sector during the month.
- The number of employed persons in the **employees'** category constituted **75.1 per cent** of the total employed persons in April 2024. This group rose by **0.1 per cent (+12.3 thousand persons)** to **12.43 million persons** (March 2024: 12.42 million persons). On the same note, the **own-account workers** category continued its upward trend, with a growth of **0.3 per cent (+9.1 thousand persons)** to **3.04 million persons** (March 2024: 3.03 million persons).
- In April 2024, the number of **unemployed persons** posted a slight decrease of **0.04 per cent (-0.2 thousand persons)** to **566.4 thousand persons**, as against 566.6 thousand persons in March 2024. The **unemployment rate** in April remained at **3.3 per cent**, as recorded last month.
- In April 2024, the number of **labour force** edged up by **0.1 per cent (+23.4 thousand persons)**, registering **17.12 million persons** (March 2024: 17.10 million persons). The **labour force participation rate** during the month was unchanged at **70.3 per cent** as in the prior month.
- The number of persons **outside the labour force** in April 2024 registered a slight increase of **0.01 per cent (+0.6 thousand persons)** to **7.23 million persons** (March 2024: 7.23 million persons). The main reason for being outside the labour force was due to **housework/ family responsibilities** with a share of 42.7 per cent, followed by **schooling/ training** at **41.4 per cent**.

The full publication of the Labour Force Report, April 2024 can be downloaded through eStatistik Portal

Released by:

DEPARTMENT OF STATISTICS MALAYSIA

10 JUNE 2024

Contact person:

Baharudin Mohamad

Public Relation Officer

Strategic Communication and International Division

Department of Statistics Malaysia

Tel : +603-8885 7942

Fax : +603-8888 9248

Email : baharudin[at]dosm.gov.my

