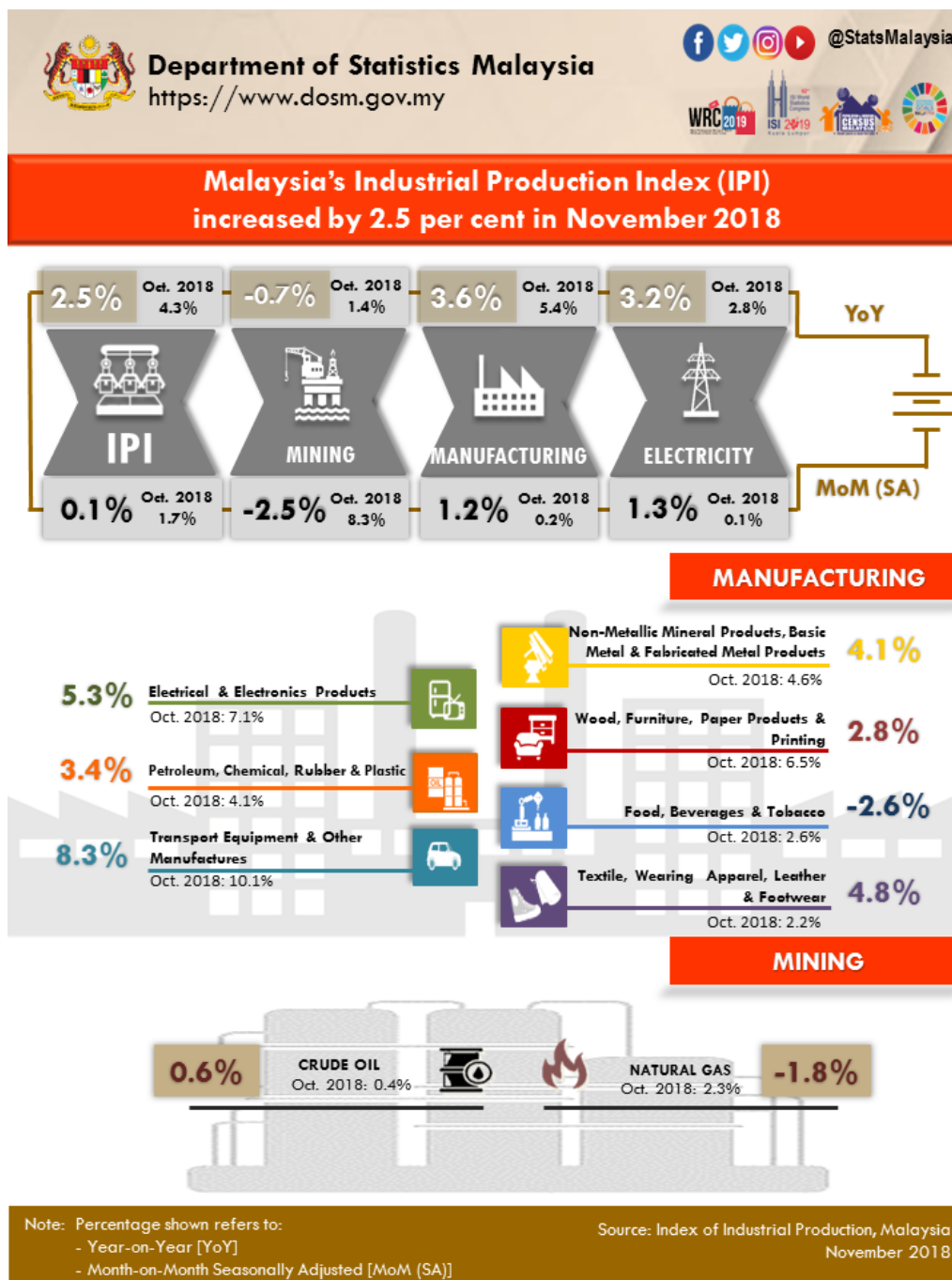




MINISTRY OF ECONOMY
DEPARTMENT OF STATISTICS MALAYSIA

INDEX OF INDUSTRIAL PRODUCTION, MALAYSIA NOVEMBER 2018



Malaysia's Industrial Production Index (IPI) rose by 2.5 per cent in November 2018

The Industrial Production Index (IPI) rose by **2.5 per cent** in November 2018 as compared with the same month of the previous year. The growth in November 2018 was supported by the increase in Manufacturing index (**3.6%**) and Electricity index (**3.2%**). Meanwhile, the Mining index declined by **0.7 per cent**.

The Manufacturing sector output expanded by **3.6 per cent** in November 2018 after registering a growth of 5.4 per cent in October 2018. The major sub – sectors that contributed to the growth in November 2018 were: Transport Equipment and Other Manufactures Products (**8.3%**), Electrical and Electronic Equipment Products (**5.3%**) and Petroleum, Chemical, Rubber and Plastic Products (**3.4%**).

The Mining sector output recorded a decline of **0.7 per cent** in November 2018 as compared to the same period of the previous year. This was due to a decrease in Natural Gas index (**-1.8%**). Meanwhile, Crude Oil index increased marginally by **0.6 per cent**.

The Electricity sector index increased by **3.2 per cent** in November 2018 as against November 2017.

***Notes:**

Data for November 2018 is provisional. The data will be updated based on the latest available figures and subsequently published in the December 2018 publication.

Released By:

DATO' SRI DR. MOHD UZIR MAHIDIN
CHIEF STATISTICIAN MALAYSIA
DEPARTMENT OF STATISTICS, MALAYSIA

 [DrUzir_Mahidin](#)  [Dr_Uzir](#) 

#myHariBulan# #myBulan# #myTahun#

Contact person:

Ho Mei Kei
Public Relation Officer
Strategic Communication and International Division
Department of Statistics, Malaysia
Tel : +603-8885 7942
Fax : +603-8888 9248
Email : mkho[at]dosm.gov.my

Contact person:

Baharudin Mohamad
Public Relation Officer
Strategic Communication and International Division
Department of Statistics Malaysia
Tel : +603-8090 4681
Fax : +603-8888 9248
Email : baharudin[at]dosm.gov.my

