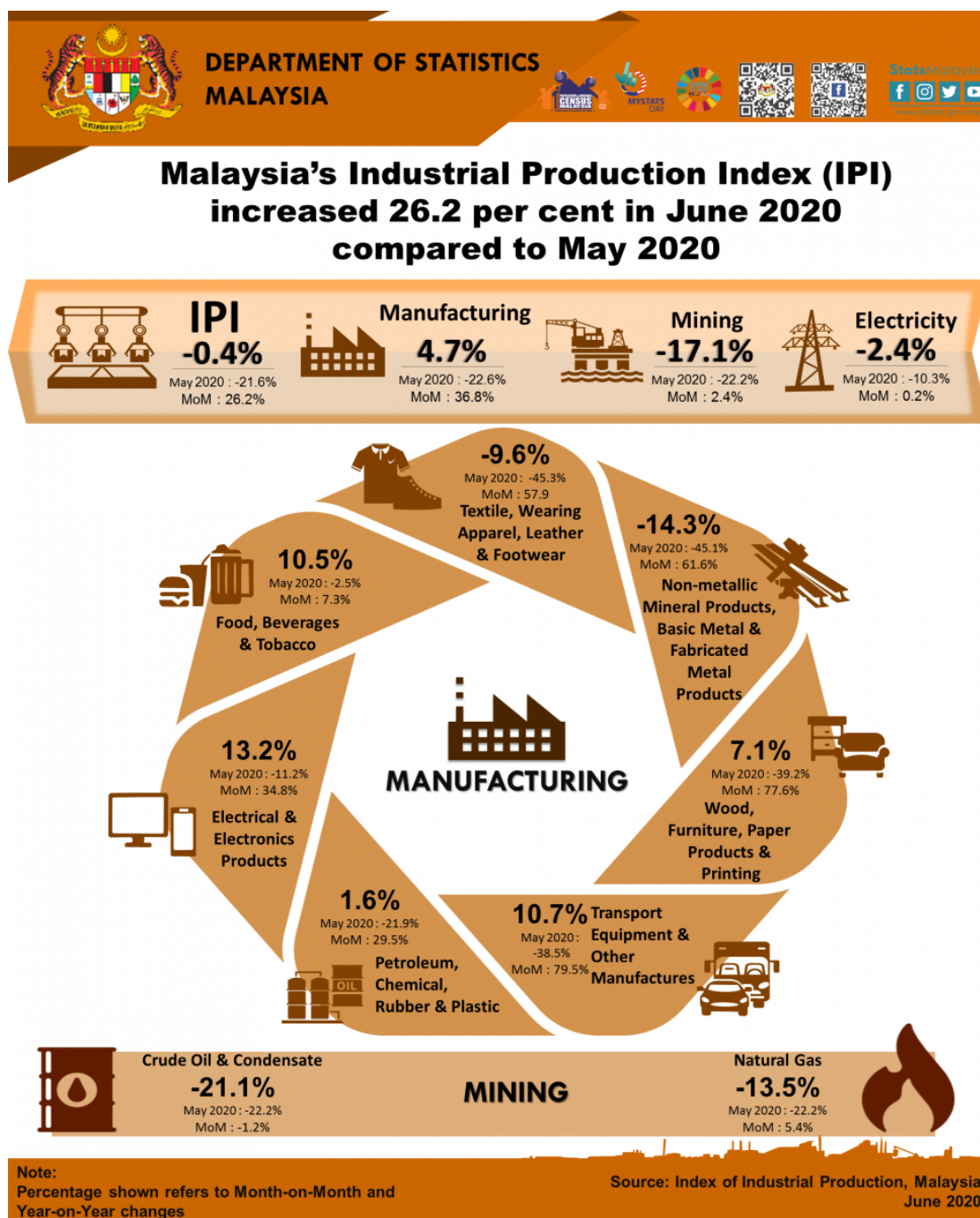




MINISTRY OF ECONOMY
DEPARTMENT OF STATISTICS MALAYSIA

INDEX OF INDUSTRIAL PRODUCTION, MALAYSIA JUNE 2020



Malaysia's Industrial Production Index (IPI) increased 26.2 per cent in June 2020 compared to May 2020

The Industrial Production Index (IPI) surged **26.2 per cent** in June 2020 as compared with the previous month since the government allowed more industries to resume operations from May 2020 onwards. Based on month-on-month comparison, the increment of IPI in June 2020 was due to the increase in all indices; index of Manufacturing (**36.8%**), index of Mining (**2.4%**) and index of Electricity (**0.2%**).

However, on year-on-year basis, the IPI decreased **0.4 per cent** in June 2020 as compared with the same month of the previous year. The decline in IPI in June 2020 was due to the decrease in the index of Mining (**-17.1%**) and Electricity (**-2.4%**). Meanwhile, the Manufacturing index recorded an increase of **4.7 per cent**.

The Manufacturing sector output increased by **4.7 per cent** in June 2020 after recording a decrease of 22.6 per cent in May 2020. The major sub-sectors contributing to the growth in Manufacturing sector in June 2020 were Electrical and Electronics Products (**13.2%**), Food, Beverages and Tobacco (**10.5%**) and Transport Equipment and Other Manufacturers (**10.7%**).

The Mining sector output dropped **17.1 per cent** in June 2020 as compared to the same period of the previous year. The negative growth was due to the decrease in Natural Gas index (**-13.5%**) and Crude Oil and Condensate index (**-21.1%**).

The Electricity sector output decreased **2.4 per cent** in June 2020 as compared to the same month of the previous year.

The IPI for the second quarter 2020 recorded a significant decline of **17.9 per cent** as compared to the same period of the previous year. This decrease was due to the deterioration in all indices; Mining index (**-19.6%**), Manufacturing index (**-18.1%**) and Electricity index (**-10.8%**).

The full publication of the Industrial Production Index, June 2020 can be downloaded through [eStatistik](#) portal.

***Notes:**

Data for June 2020 is **provisional**. The data will be updated based on the latest available figures and subsequently published in the July 2020 publication.

Released By:

DATO' SRI DR. MOHD UZIR MAHIDIN
CHIEF STATISTICIAN MALAYSIA
DEPARTMENT OF STATISTICS, MALAYSIA

 [DrUzir_Mahidin](#)  [Dr_Uzir](#) 

#myHariBulan# #myBulan# #myTahun#

Contact person:

Mohd Yusrizal Ab Razak
Public Relation Officer

Strategic Communication and International Division
Department of Statistics, Malaysia
Tel : +603-8885 7942
Fax : +603-8888 9248
E-mail : yusrizal.razak[at]dosm.gov.my

Contact person:

Baharudin Mohamad
Public Relation Officer
Strategic Communication and International Division
Department of Statistics Malaysia
Tel : +603-8090 4681
Fax : +603-8888 9248
Email : baharudin[at]dosm.gov.my

Copyright ©2025 Department of Statistics Malaysia Official Portal. All Rights Reserved.