



MINISTRY OF ECONOMY
DEPARTMENT OF STATISTICS MALAYSIA

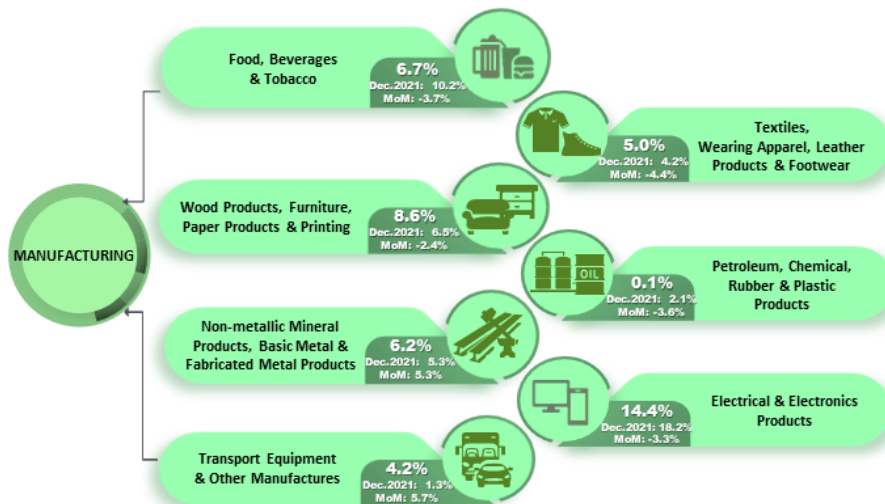
INDEX OF INDUSTRIAL PRODUCTION, MALAYSIA JANUARY 2022

PRIME MINISTER'S DEPARTMENT
DEPARTMENT OF STATISTICS MALAYSIA

HIES
BA
KELUARGA
MALAYSIA

StatsMalaysia
www.dsm.gov.my

Malaysia's Industrial Production Index (IPI) remained positive in January 2022 with a growth of 4.3 per cent



Note :
Percentage refers to the change in
Month-on-month (MoM) And Year-on-year (YoY)

Source:
Index Of Industrial Production Malaysia, January 2022
Department Of Statistics Malaysia

Malaysia's Industrial Production Index (IPI) remained positive in January 2022 with a growth of 4.3 per cent

The Industrial Production Index (IPI) increased **4.3 per cent** in January 2022 as compared to the same month of the previous year. The expansion of IPI was contributed by the increment of **6.8 per cent** in Manufacturing index and **7.7 per cent** in Electricity index. Meanwhile, Mining Index recorded a decline of **5.1 per cent**.

The Manufacturing sector output based on year-on-year comparison increased by **6.8 per cent** in January 2022 after recording a growth of 8.4 per cent in December 2021. The main subsectors contributed to the growth in Manufacturing sector in January 2022 were Electrical & Electronics Products (**14.4%**), Food, Beverages & Tobacco Products (**6.7%**) and Non-metallic Mineral Products, Basic Metal & Fabricated Metal Products (**6.2%**). Simultaneously, export-oriented and domestic-oriented industries recorded a growth of **6.7 per cent** and **7.0 per cent** respectively.

The Mining sector output declined **5.1 per cent** in January 2022 as compared to the same period of the previous year. The deterioration was affected by the decrease of 13.9 per cent in Crude Oil & Condensate index while the Natural Gas index recorded a growth of **1.6 per cent**. The Electricity sector output rose **7.7 per cent** in January 2022 as compared to the same month last year.

The full publication of the Industrial Production Index, January 2022 can be downloaded through [eStatistik](#) portal.

*** Notes:**

Data for January 2022 is **provisional**. The data will be updated based on the latest available figures and subsequently published in the February 2022 publication.

Released By:

DATO' SRI DR. MOHD UZIR MAHIDIN
CHIEF STATISTICIAN MALAYSIA
DEPARTMENT OF STATISTICS, MALAYSIA

 [DrUzir_Mahidin](#)   [Dr_Uzir](#)

#myHariBulan# #myBulan# #myTahun#

Contact person:

Mohd Yusrizal Ab Razak
Public Relation Officer
Strategic Communication and International Division
Department of Statistics, Malaysia

Tel : +603-8885 7942

Fax : +603-8888 9248

E-mail : [yusrizal.razak\[at\]dosm.gov.my](mailto:yusrizal.razak[at]dosm.gov.my)

Contact person:

Baharudin Mohamad
Public Relation Officer
Strategic Communication and International Division
Department of Statistics Malaysia

Tel : +603-8885 7942

Fax : +603-8888 9248

Email : baharudin[at]dosm.gov.my

Copyright ©2025 Department of Statistics Malaysia Official Portal. All Rights Reserved.