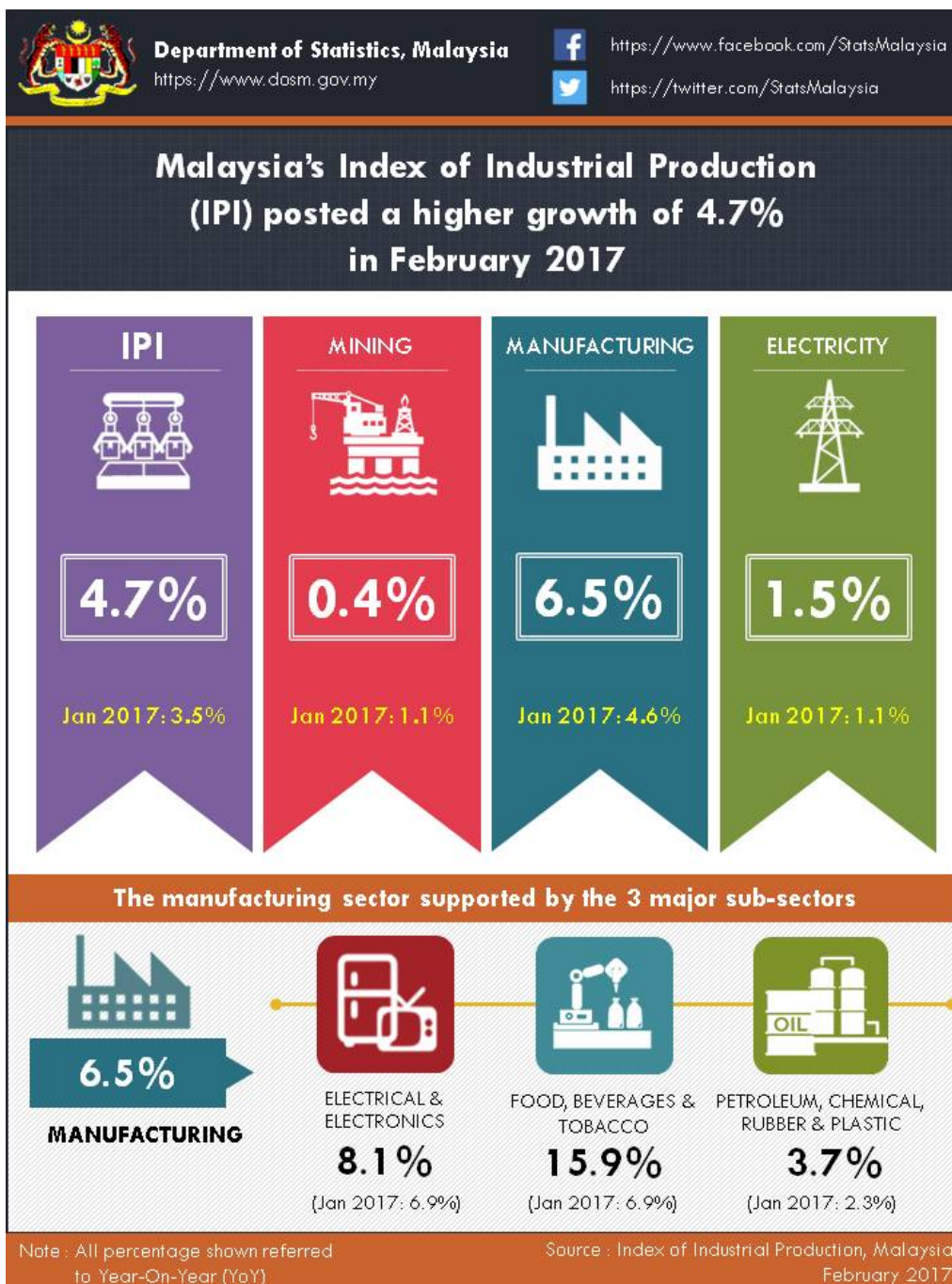




MINISTRY OF ECONOMY
DEPARTMENT OF STATISTICS MALAYSIA

INDEX OF INDUSTRIAL PRODUCTION, MALAYSIA FEBRUARY 2017



Malaysia's Index of Industrial Production (IPI) posted a higher growth of 4.7% in February 2017

The Index of Industrial Production (IPI) posted a higher growth of **4.7%** in February 2017 as compared to the same month of the previous year. The stronger growth in February 2017 was driven by positive expansion in all indices: Manufacturing (**6.5%**), Mining (**0.4%**) and Electricity (**1.5%**).

The Manufacturing sector output increase at a faster pace of **6.5%** in February 2017 after an expansion of 4.6% recorded in January 2017. The major sub-sectors that propelled the growth in February 2017 were: Electrical and Electronics Products (**8.1%**); Food, Beverages and Tobacco (**15.9%**); and Petroleum, Chemical, Rubber and Plastic Products (**3.7%**).

The Mining sector output grew nominally by **0.4%** in February 2017 after an increase of 1.1% in January 2017. This was mainly due to a further decline in Crude Oil index by **4.7%**. However, the Natural Gas index posted a better growth of **7.0%**.

The Electricity sector output grew marginally by **1.5%** in February 2017 after registering a growth of 1.1% in January 2017.

***Notes:**

Data for February 2017 is **provisional**. The data will be updated based on the latest available figures and subsequently published in the publication March 2017.

Released By:

DR. MOHD UZIR MAHIDIN
CHIEF STATISTICIAN MALAYSIA
DEPARTMENT OF STATISTICS MALAYSIA

11 APRIL 2017

Contact person:

Ho Mei Kei
Public Relation Officer
Corporate and User Services Division
Department of Statistics, Malaysia
Tel : +603-8885 7942
Fax : +603-8888 9248
Email : mkho[at]stats.gov.my

Contact person:

Baharudin Mohamad
Public Relation Officer
Strategic Communication and International Division
Department of Statistics Malaysia
Tel : +603-8885 7942
Fax : +603-8888 9248
Email : baharudin[at]dosm.gov.my

Copyright ©2025 Department of Statistics Malaysia Official Portal. All Rights Reserved.