

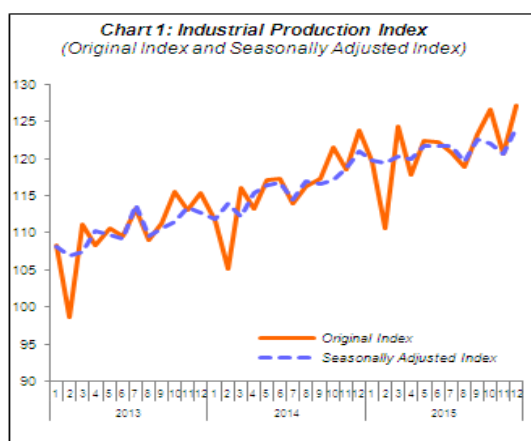


MINISTRY OF ECONOMY
DEPARTMENT OF STATISTICS MALAYSIA

INDEX OF INDUSTRIAL PRODUCTION, MALAYSIA DECEMBER 2015

HIGHLIGHTS

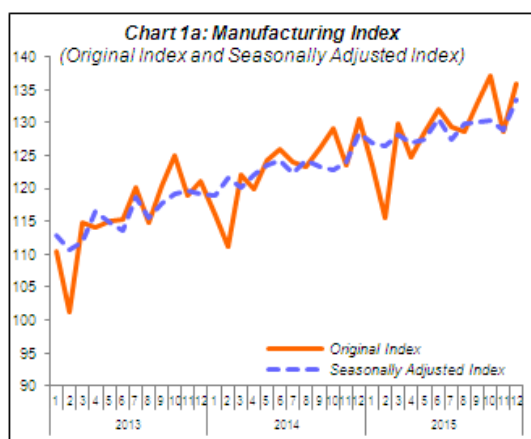
Sector	Seasonally Adjusted Index		Original Index	
	Index	% Changes Month-on-Month	Index	% Changes Year-on-Year
IPI	124.1	2.8	127.2	2.7
Mining Index	102.8	2.5	107.8	-1.5
Manufacturing Index	133.6	3.6	135.9	4.0
Electricity Index	126.1	3.5	124.4	5.6



PERFORMANCE OF INDUSTRIAL PRODUCTION INDEX

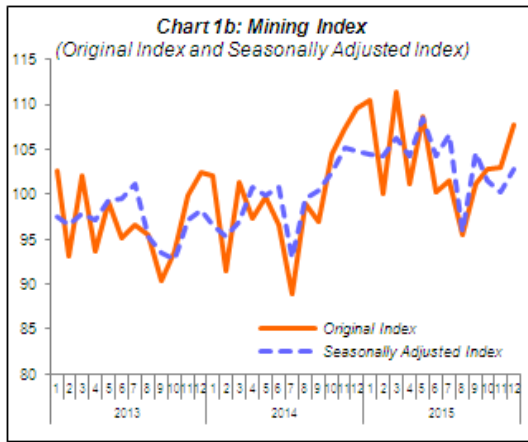
The Industrial Production Index (IPI) rose by 2.7% in December 2015 as compared to the same month of the previous year. The increase in December 2015 was supported by positive growth in Manufacturing index (4.0%) and Electricity index (5.6%). However, the Mining index recorded a decrease of 1.5%. The IPI in November 2015 remained unchanged at 1.8% year-on-year.

In seasonally adjusted terms, the IPI in December 2015 edged up 2.8% month-on-month following an increase in all indices: Manufacturing (3.6%), Mining (2.5%) and Electricity (3.5%).



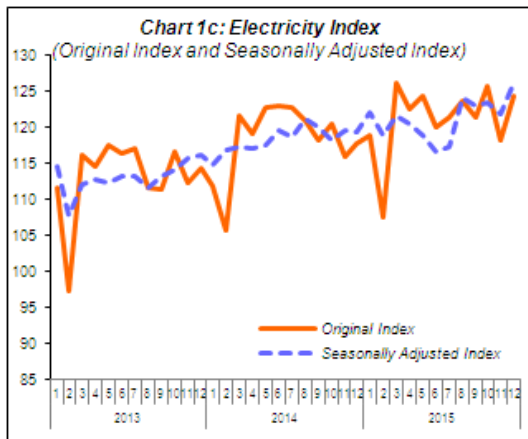
PERFORMANCE OF MANUFACTURING SECTOR

Year-on-year, Manufacturing sector output grew 4.0% in December 2015 after registering a growth of 4.1% in November 2015. The major sub-sectors which recorded an expansion in December 2015 were: Electrical and Electronics Products (8.6%); Petroleum, Chemical, Rubber and Plastic Products (1.6%) and Non-metallic Mineral Products, Basic Metal and Fabricated Metal Products (5.0%). On a seasonally adjusted month-on-month, Manufacturing output recorded an increase of 3.6% in December 2015.



PERFORMANCE OF MINING SECTOR

The Mining sector output fell by 1.5% in December 2015 as compared to the same month in 2014 due to the decrease in Natural Gas index (3.0%) and Crude Oil index (0.3%). On a seasonally adjusted terms, output for the Mining sector increased 2.5% as compared to November 2015.



PERFORMANCE OF ELECTRICITY SECTOR

The Electricity sector output grew 5.6% in December 2015 on yearly basis. On a seasonally adjusted terms, Electricity sector output increased 3.5% as compared to the previous month.

PERFORMANCE OF INDUSTRIAL PRODUCTION INDEX FOR THE FOURTH QUARTER 2015

Malaysia's Industrial Production Index for the fourth quarter 2015 expanded by 2.9%, compared with the same quarter of the previous year. The expansion was supported by the increase in the index of Manufacturing (4.8%) and Electricity (4.0%). However, the Mining index posted a decrease of 2.4%.

Sector	Q3 2015	Q4 2015	% Changes	
			Q4 2015/ Q4 2014	Q4 2015/ Q3 2015
IPI	121.0	124.8	2.9	3.2
Mining Index	99.4	104.5	-2.4	5.2
Manufacturing Index	130.4	133.9	4.8	2.7
Electricity Index	122.2	122.8	4.0	0.6

*** Notes:**

Data for December 2015 is **provisional**. The data will be updated based on the latest available figures and subsequently published in the January 2016 publication.

THE OFFICE OF CHIEF STATISTICIAN MALAYSIA
DEPARTMENT OF STATISTICS MALAYSIA
11 FEBRUARY 2016

Contact person:

Ho Mei Kei
Public Relation Officer
Corporate and User Services Division
Department of Statistics, Malaysia

Tel : +603-8885 7942
Fax : +603-8888 9248
Email : mkho@stats.gov.my

Contact person:

Baharudin Mohamad
Public Relation Officer
Strategic Communication and International Division
Department of Statistics Malaysia
Tel : +603-8885 7942
Fax : +603-8888 9248
Email : baharudin[at]dosm.gov.my

Copyright ©2025 Department of Statistics Malaysia Official Portal. All Rights Reserved.