



MINISTRY OF ECONOMY  
DEPARTMENT OF STATISTICS MALAYSIA

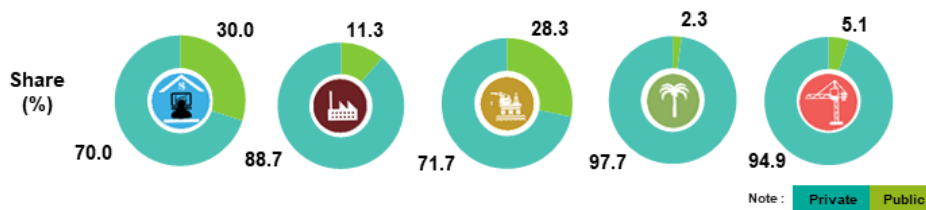
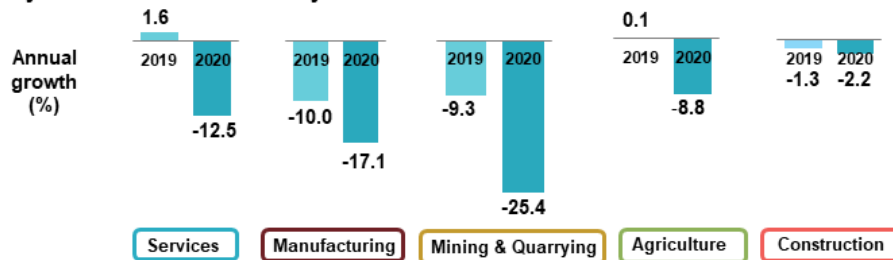
## GROSS FIXED CAPITAL FORMATION 2020



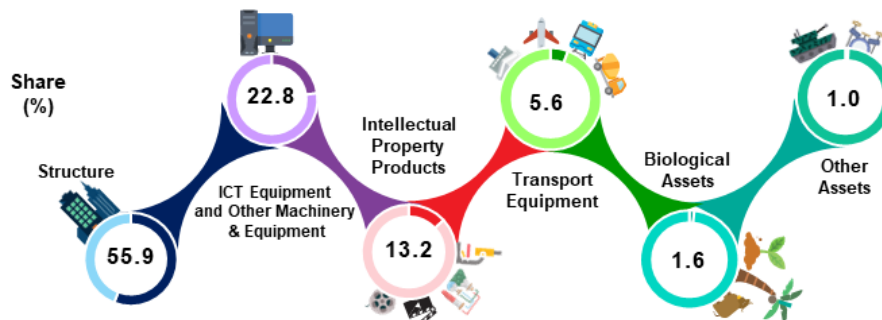
### GROSS FIXED CAPITAL FORMATION 2020



#### By Kind of Economic Activity



#### By Type of Assets

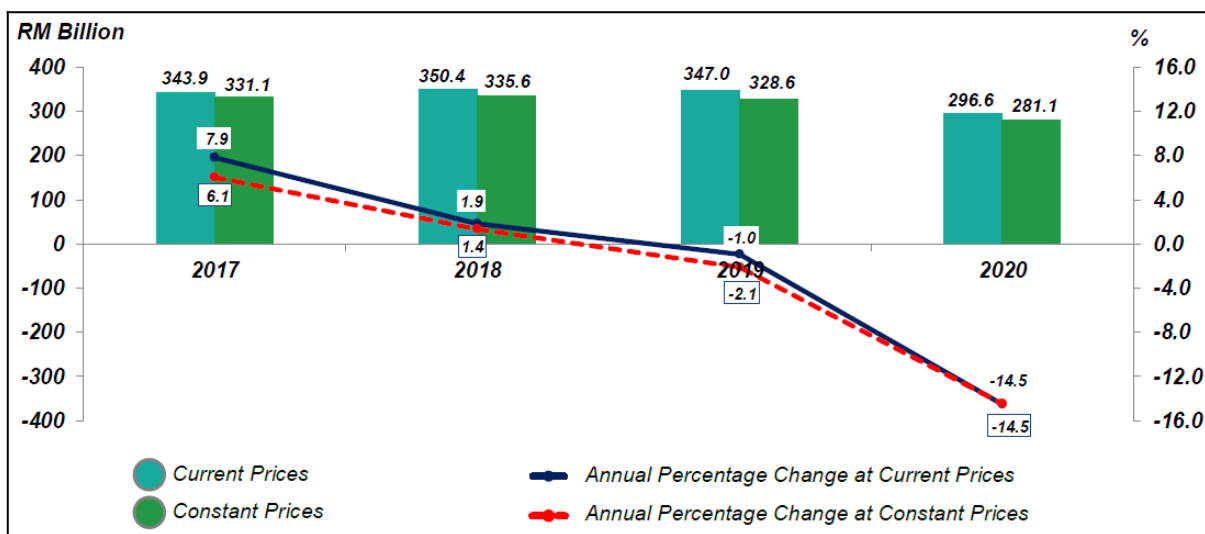


Source: National Accounts, Gross Fixed Capital Formation, Department of Statistics Malaysia

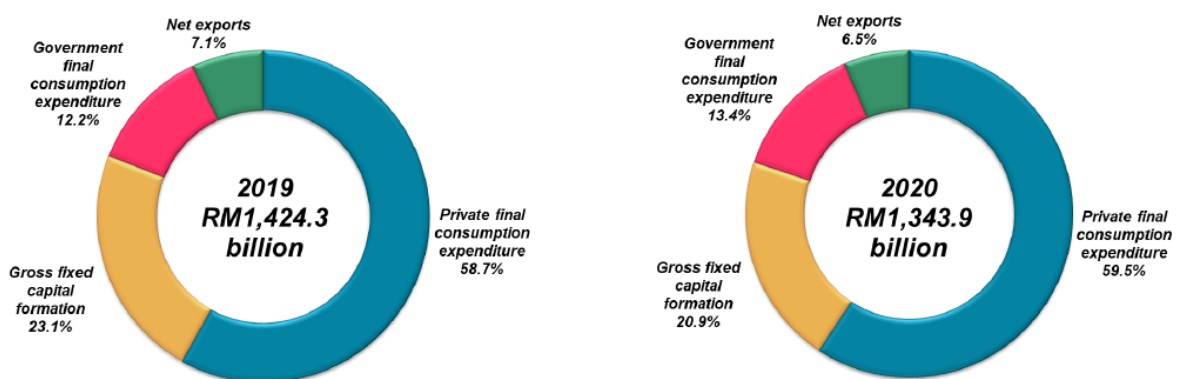
## GROSS FIXED CAPITAL FORMATION 2020

Malaysia's Gross Fixed Capital Formation (GFCF) growth contracted 14.5 per cent in 2020 as compared to negative 2.1 per cent in the preceding year attributed the COVID-19 pandemic which has affected the performance of all economic activities (Chart 1). This was the biggest contraction since the Asian Financial Crisis whereby GFCF declined 43.0 per cent in 1998. The reduction in investments will lead to a lower production capacity in the future and thus have implications for potential output. GFCF remained as the second largest component in Gross Domestic Product (GDP) with a share of 20.9 per cent (2019: 23.1%) from the overall economy as shown in Chart 2. The fixed asset investment continuously led by Private sector. Meanwhile, Structure was the main contributor for GFCF by types of assets.

**Chart 1: GFCF - Value and Annual Percentage Change at Current Prices and Constant 2015 Prices**



**Chart 2: Percentage Share of GDP by Expenditure Approach at Constant 2015 Prices**

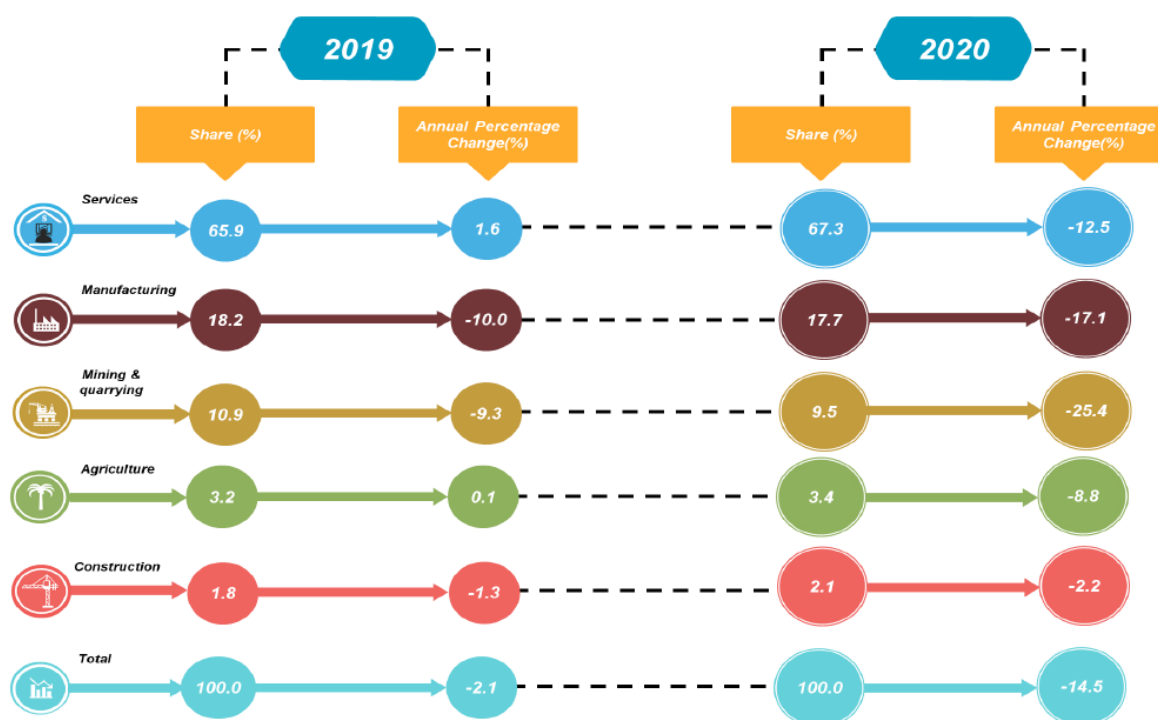


Note: Exclude Changes in Inventories, Valuables & Statistical Discrepancy

## GFCF BY KIND OF ECONOMIC ACTIVITY

GFCF further dropped to 14.5 per cent from negative 2.1 per cent in the preceding year (Exhibit 1) due to the lethargic performance in all sectors in 2020.

## Exhibit 1: GFCF by Kind of Economic Activity at Constant 2015 Prices



GFCF in **Services** sector contracted to 12.5 per cent (2019: 1.6%) influenced by the decline in the performance of Transportation & storage and information & communication and Finance, insurance, real estate & business services at negative 24.9 per cent and negative 10.9 per cent. On the other hand, Food & beverages and accommodation posted a growth of 0.5 per cent as compared to the preceding year.

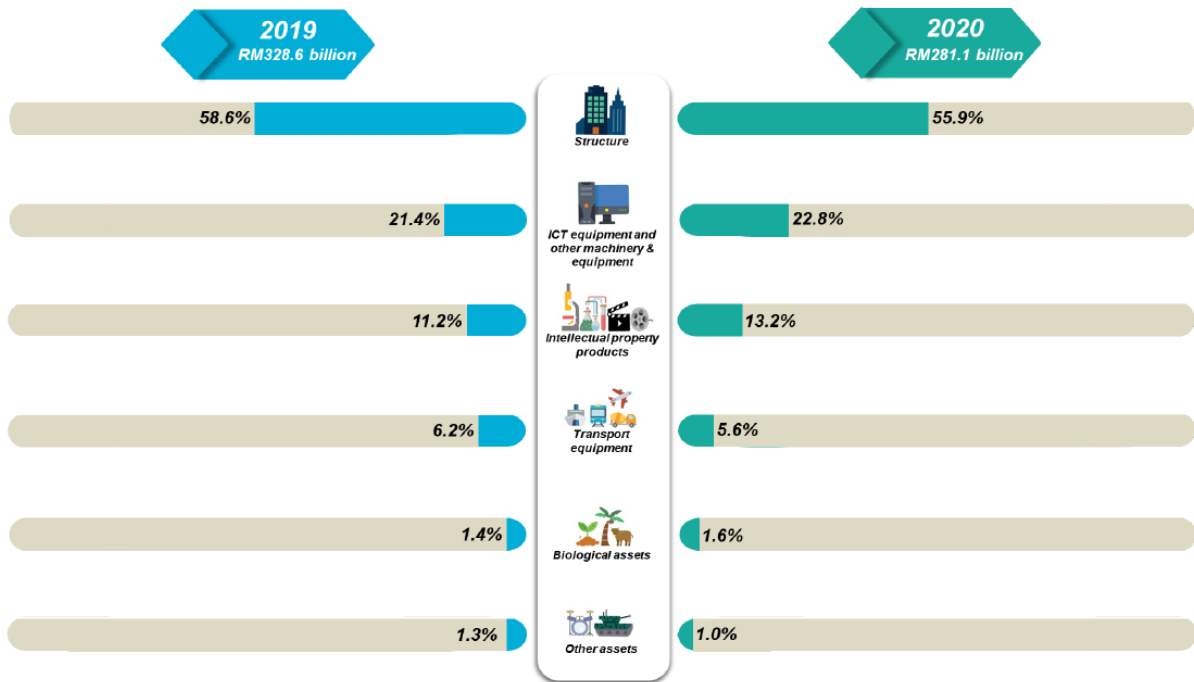
GFCF in **Manufacturing** sector dropped by 17.1 per cent as against a decline of 10.0 per cent in the previous year. The sluggish performance was attributed by Petroleum, chemical, rubber and plastic products which recorded a decrease of 24.4 per cent. Electrical, electronic & optical products and transport equipment has also weighed down the overall performance of Manufacturing by contracting 17.2 per cent (2019: -6.8%). Moreover, Non-metallic mineral products, basic metal and fabricated metal products and Textiles & wood products declined 15.1 per cent (2019: -7.2%) and negative 7.8 per cent (2019: -7.5%) respectively.

**Mining and quarrying** sector declined by 25.4 per cent from a decrease of 9.3 per cent in the preceding year. **Agriculture** sector also contracted 8.8 per cent (2019: 0.1%) attributed to the weakened performance in all sub-sectors. Meanwhile **Construction** sector decreased by 2.2 per cent in 2020, steeper than the decline of 1.3 per cent recorded in the previous year.

### GFCF BY TYPE OF ASSETS

Structure remained as the major contributor to GFCF with a share of 55.9 per cent, although it declined 18.3 per cent (2019: -0.5%) in 2020 compared with a year ago. Furthermore, ICT equipment and other machinery & equipment dropped to 8.9 per cent (2019: -4.1%), while Intellectual property products grew marginally at 0.6 per cent (2019: 2.2%).

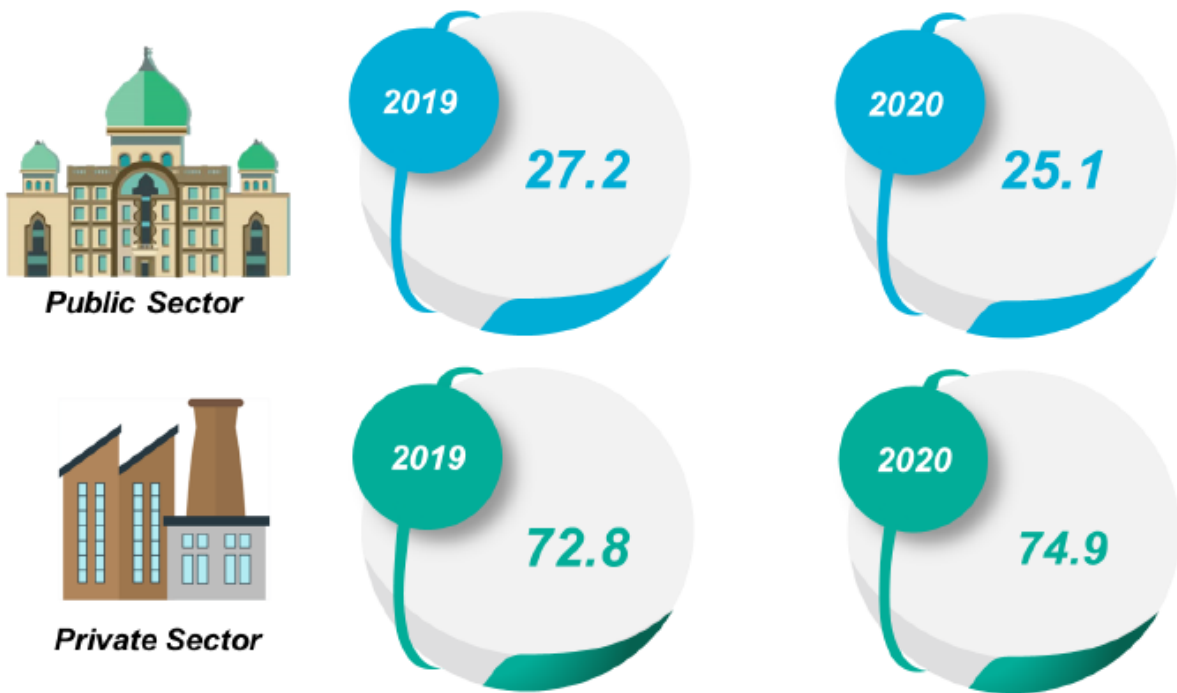
**Exhibit 2: Percentage Share of GFCF by Type of Assets at Constant 2015 Prices**



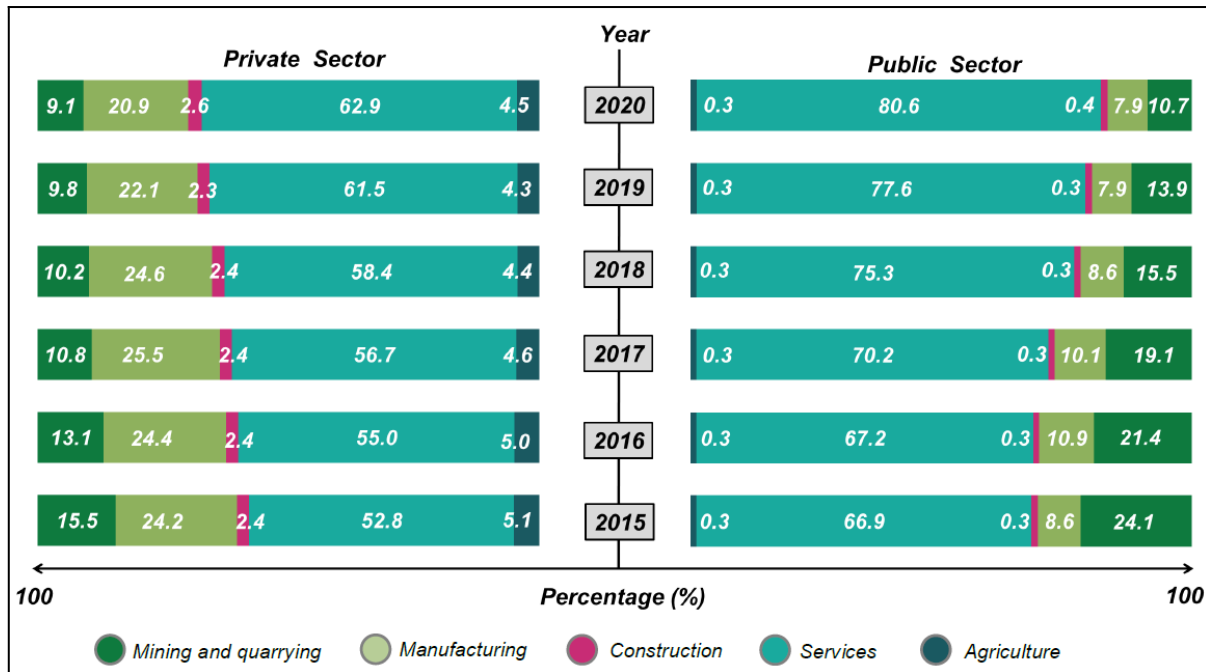
**GFCF BY SECTOR AND KIND OF ECONOMIC ACTIVITY**

Private sector continued to be the dominant contributor to GFCF (share: 74.9%) declined 11.9 per cent as compared to 1.6 per cent in 2019. Public sector (share: 25.1%) also showed a similar downward trend by recording a further decrease of 21.3 per cent in 2020 as illustrated in Exhibit 3.

**Exhibit 3: Percentage Share of GFCF by Sector at Constant 2015 Prices**



**Chart 3: Percentage Share of GFCF by Sector and Kind of Economic Activity at Constant 2015 Prices**



Services and Manufacturing activities were the main contributors in GFCF of Private sector as depicted in Chart 3. The share of Services activity stepped-up to 62.9 per cent (2019: 61.5%) while Manufacturing activity maintained its position as the second largest contributor with a share of 20.9 per cent (2019: 22.1%). The remaining activities made-up 16.2 per cent of the total Private sector of GFCF.

GFCF of Public sector was largely dominated by Services activity with a highest share of 80.6 per cent. This was followed by Mining & quarrying and Manufacturing activities at 10.7 per cent and 7.9 per cent share respectively.

The full publication of Gross Fixed Capital Formation (GFCF) 2020 can be downloaded through [eStatistik](#) portal.

**Released By:**

**DATO' SRI DR. MOHD UZIR MAHIDIN**  
**CHIEF STATISTICIAN MALAYSIA**  
**DEPARTMENT OF STATISTICS, MALAYSIA**

[f](#) DrUzir\_Mahidin [t](#) [i](#) Dr\_Uzir

**#myHariBulan# #myBulan# #myTahun#**

**Contact person:**

Mohd Yusrizal Ab Razak  
 Public Relation Officer  
 Strategic Communication and International Division  
 Department of Statistics, Malaysia  
**Tel : +603-8885 7942**

**Fax** : +603-8888 9248

**Email** : yusrizal.razak[at]dosm.gov.my

**Contact person:**

Baharudin Mohamad

Public Relation Officer

Strategic Communication and International Division

Department of Statistics Malaysia

Tel : +603-8885 7942

Fax : +603-8888 9248

Email : baharudin[at]dosm.gov.my

**Copyright ©2025 Department of Statistics Malaysia Official Portal. All Rights Reserved.**