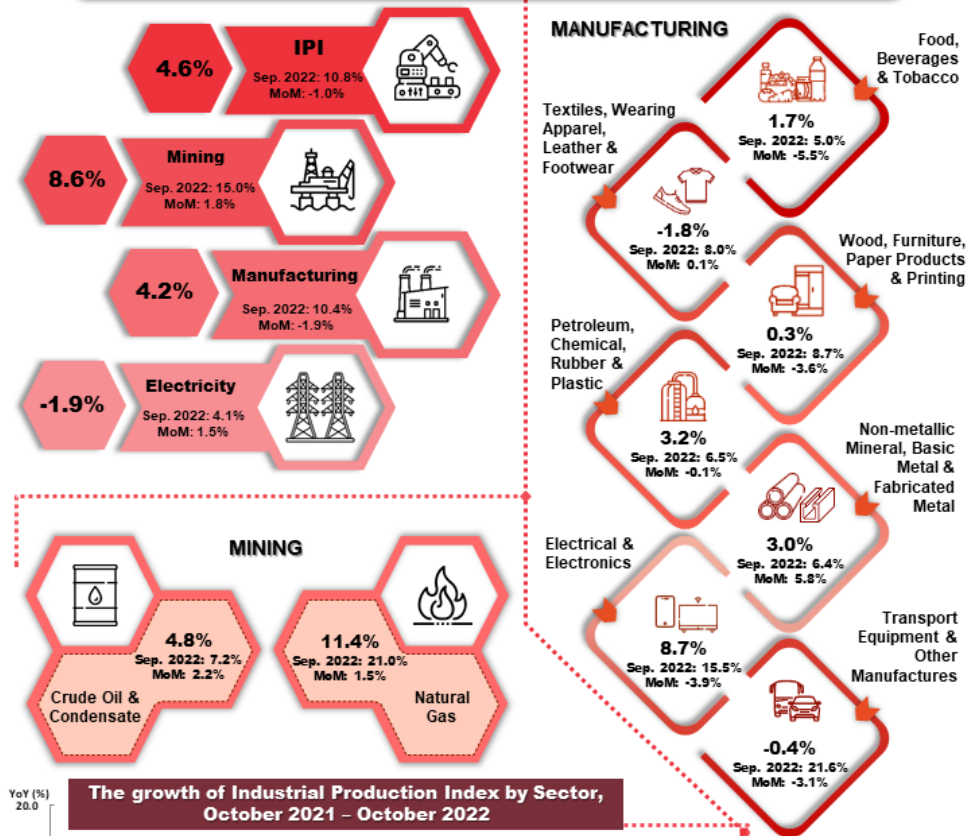




MINISTRY OF ECONOMY
DEPARTMENT OF STATISTICS MALAYSIA

INDEX OF INDUSTRIAL PRODUCTION, MALAYSIA, OCTOBER 2022

Malaysia's Industrial Production Index (IPI) grew by 4.6 per cent in October 2022, supported by expansion in Mining and Manufacturing sectors



Note: Percentage refers to the change in Month-on-month (MoM) and Year-on-year (YoY)
Source: Index of Industrial Production Malaysia, October 2022
Department of Statistics Malaysia (DOSM)

The Industrial Production Index (IPI) grew by **4.6 per cent** in October 2022, after registering double-digit growth for four consecutive months. The moderation in growth also was attributed to the high base index recorded in the same month of the previous year. The expansion of IPI during the month was contributed by the increment in Mining index (**8.6%**) and Manufacturing index (**4.2%**) while Electricity index recorded a decline of **1.9 per cent**.

The main subsectors that contributed to the growth were Electrical & Electronics Products (**8.7%**); Petroleum, Chemical, Rubber & Plastic Products (**3.2%**); and Non-metallic Mineral Products, Basic Metal & Fabricated Metal Products (**3.0%**). The performance of Manufacturing sector during the month was supported by both export-oriented industries (**5.0%**) and domestic-oriented industries (**2.5%**).

Output in the Mining sector rose **8.6 per cent** in October 2022 after expanding strongly by **15.0 per cent** in September 2022. The growth was contributed by the increment of **11.4 per cent** in Natural Gas index and **4.8 per cent** in Crude Oil & Condensate index. As compared to the previous month, the Mining index increased by **1.8 per cent** (September 2022: +3.8%).

Meanwhile, the Electricity index declined by **1.9 per cent** in October 2022 as against positive growth of **4.1 per cent** recorded in the previous month. In terms of month-on-month comparison, the Electricity index turned around to **1.5 per cent** after two consecutive months on a declining trend (September 2022: -3.7%; August 2022: -0.2%).

The IPI performance for the period of January to October 2022 recorded an expansion of **7.5 per cent** as compared to the same period of the previous year. The increase was supported by the Manufacturing index (**9.1%**); Electricity index (**5.4%**) and Mining index (**2.3%**).

Contact person:

Baharudin Mohamad
Public Relation Officer
Strategic Communication and International Division
Department of Statistics Malaysia
Tel : +603-8885 7942
Fax : +603-8888 9248
Email : baharudin[at]dosm.gov.my

Copyright ©2025 Department of Statistics Malaysia Official Portal. All Rights Reserved.