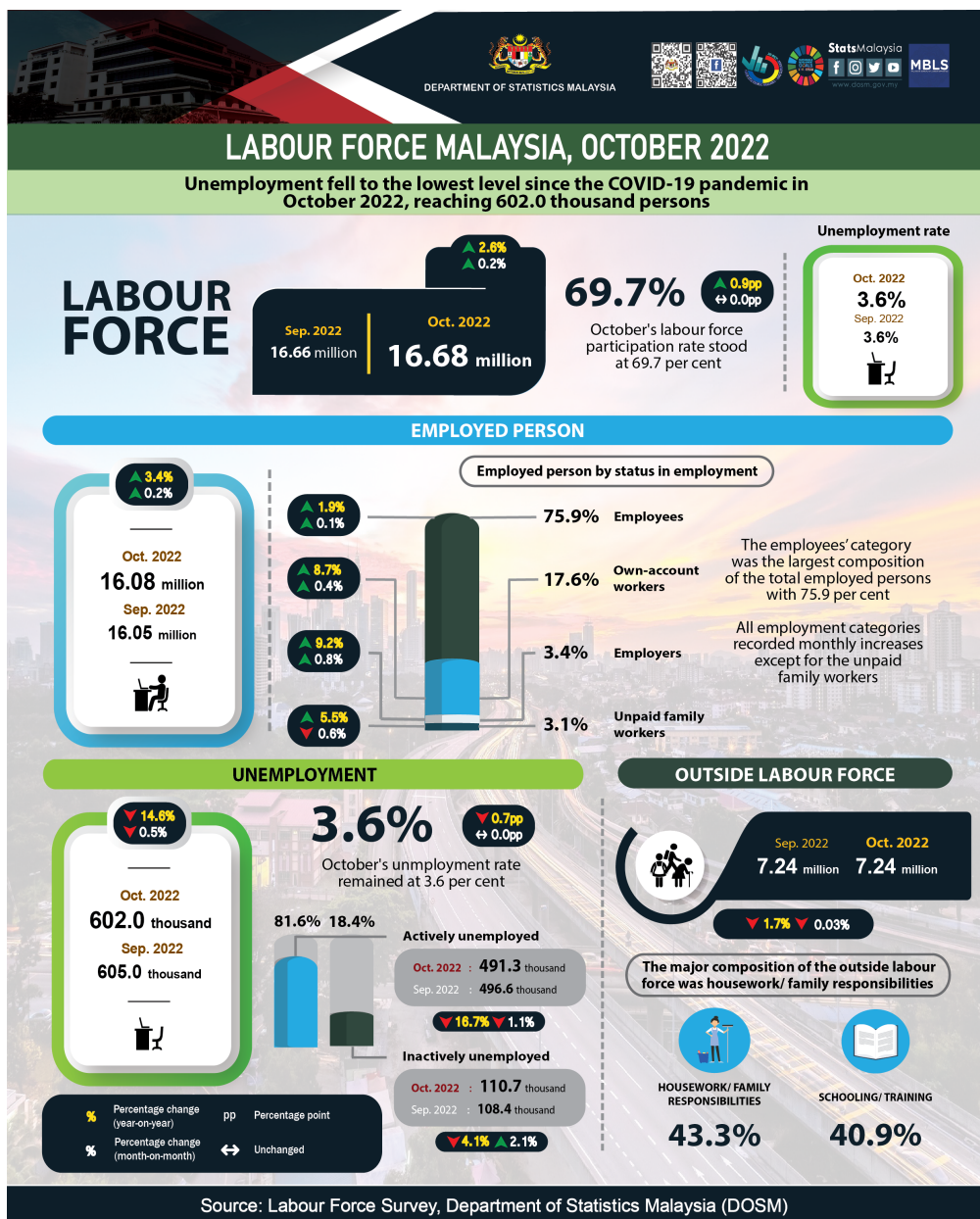




MINISTRY OF ECONOMY
DEPARTMENT OF STATISTICS MALAYSIA

KEY STATISTICS OF LABOUR FORCE IN MALAYSIA, OCTOBER 2022



LABOUR FORCE MALAYSIA, OCTOBER 2022

Unemployment fell to the lowest level since the COVID-19 pandemic in October 2022, reaching 602.0 thousand persons

LABOUR FORCE

Sep. 2022	16.66 million
Oct. 2022	16.68 million

▲ 2.6%
▲ 0.2%

69.7%

October's labour force participation rate stood at 69.7 per cent

▲ 0.9pp
↔ 0.0pp

Unemployment rate

Oct. 2022	3.6%
Sep. 2022	3.6%

EMPLOYED PERSON

▲ 3.4%
▲ 0.2%

Oct. 2022
16.08 million
 Sep. 2022
 16.05 million

Employed person by status in employment

Employees	75.9%	▲ 1.9% ▲ 0.1%
Own-account workers	17.6%	▲ 8.7% ▲ 0.4%
Employers	3.4%	▲ 8.2% ▲ 0.8%
Unpaid family workers	3.1%	▲ 5.6% ▼ 0.6%

The employees' category was the largest composition of the total employed persons with 75.9 per cent

All employment categories recorded monthly increases except for the unpaid family workers

UNEMPLOYMENT

▼ 14.8%
▼ 0.5%

Oct. 2022
602.0 thousand
 Sep. 2022
 605.0 thousand

3.6%

October's unemployment rate remained at 3.6 per cent

Actively unemployed	81.6%	Oct. 2022 : 491.3 thousand Sep. 2022 : 496.6 thousand ▼ 10.7% ▼ 1.1%
Inactively unemployed	18.4%	Oct. 2022 : 110.7 thousand Sep. 2022 : 108.4 thousand ▼ 4.1% ▲ 2.1%

OUTSIDE LABOUR FORCE

Sep. 2022 : 7.24 million
 Oct. 2022 : 7.24 million
▼ 1.7% ▼ 0.03%

The major composition of the outside labour force was housework/ family responsibilities

HOUSEWORK/ FAMILY RESPONSIBILITIES	43.3%
SCHOOLING/ TRAINING	40.9%

% Percentage change (year-on-year) pp Percentage point
% Percentage change (month-on-month) ↔ Unchanged

- The improvement in the number of employed persons continued in October 2022, with a month-on-month rise of 0.2 per cent (+29.3 thousand persons) to 16.08 million persons (September 2022: 16.05 million persons). During the month, the employment-to-population ratio, which indicates the ability of an economy to create employment, was unchanged at 67.2 per cent as against the preceding month.
- By economic sector, the number of employed persons in the Services sector remained on an upward trend, particularly in Food & beverages services, Wholesale & retail trade and Finance & insurance/ takaful activities. Similarly, the number of employed persons in the Manufacturing, Construction and Agriculture sectors also recorded increases. In contrast, employment in the Mining & quarrying sector continued to fall.
- In October 2022, the employees' category which was the largest composition of the total employed persons with a share of 75.9 per cent, posted an increase of 0.1 per cent or equivalent to 17.7 thousand persons to record 12.20 million persons (September 2022: 12.18 million persons). A similar trend was observed in own-account workers, with a 0.4 per cent (+10.4 thousand persons) increased to 2.83 million persons (September 2022: 2.82 million persons).
- The number of unemployed persons declined marginally to 602.0 thousand persons, with a reduction of 0.5 per cent (-3.0 thousand persons) in October 2022, as compared to 605.0 thousand persons in September 2022. October's unemployment rate remained at 3.6 per cent, 0.3 percentage points higher than its pre-pandemic level (February 2020: 3.3%).
- During the month, the number of labour force continued to expand, with a month-on-month increase of 0.2 per cent or 26.3 thousand persons to 16.68 million persons (September 2022: 16.66 million persons). October's labour force participation rate (LFPR) stood at 69.7 per cent.
- In October 2022, the number of persons outside labour force continued a downward trend since August 2021, decreasing by 1.9 thousand persons (-0.03%) to record 7.24 million persons (September 2022: 7.24 million persons). The majority of the outside labour force was due to housework/ family responsibilities, with a share of 43.3 per cent, followed by schooling/ training with 40.9 per cent.

The full publication of the Labour Force Report, October 2022 can be downloaded through eStatistic Portal.

Released by:

DEPARTMENT OF STATISTICS MALAYSIA

09 DECEMBER 2022

Contact person:

Baharudin Mohamad

Public Relation Officer

Strategic Communication and International Division

Department of Statistics Malaysia

Tel : +603-8885 7942

Fax : +603-8888 9248

Email : baharudin[at]dosm.gov.my

Copyright ©2025 Department of Statistics Malaysia Official Portal. All Rights Reserved.