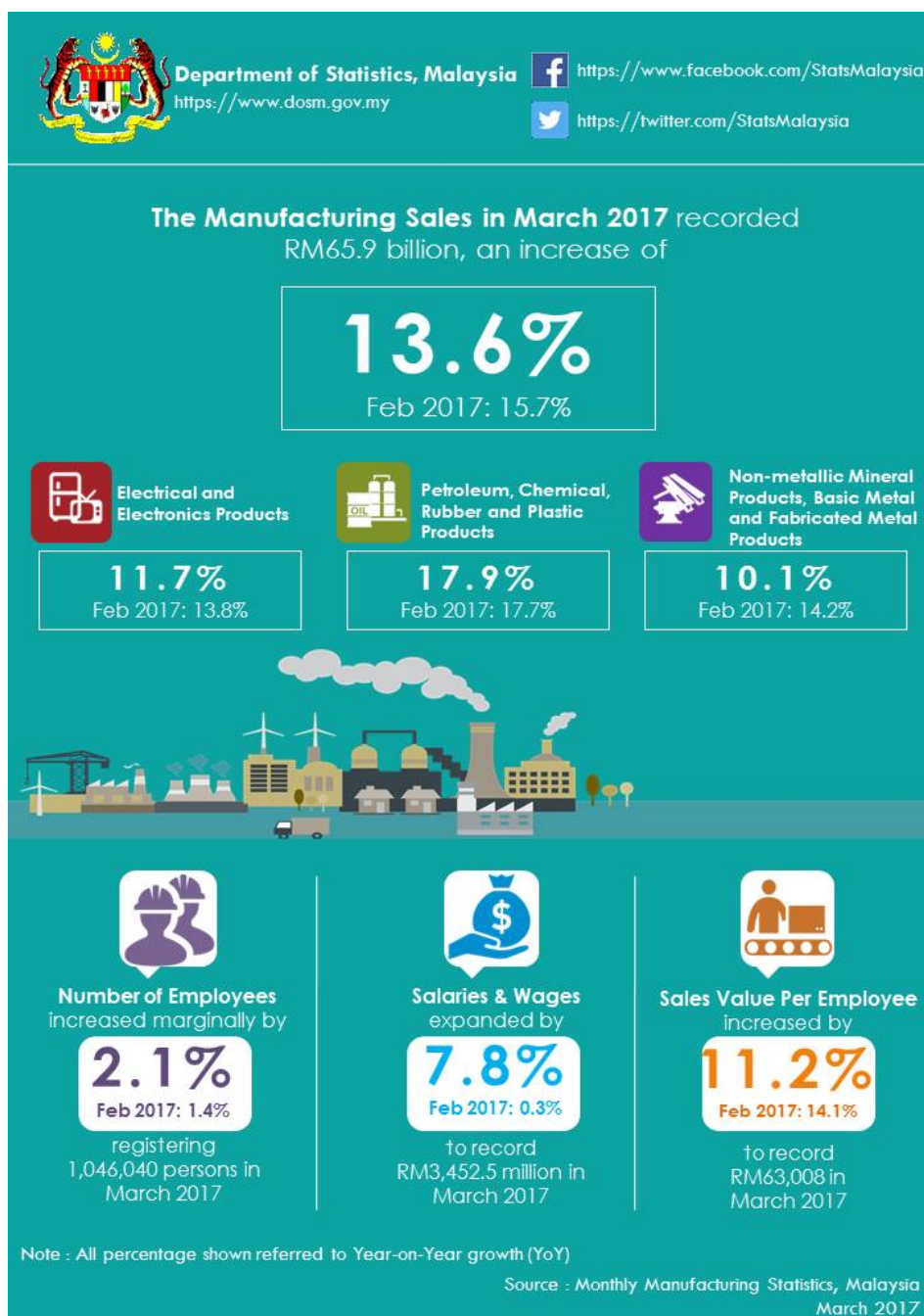




MINISTRY OF ECONOMY  
DEPARTMENT OF STATISTICS MALAYSIA

## MONTHLY MANUFACTURING STATISTICS MALAYSIA, MARCH 2017



### HIGHLIGHTS

**Manufacturing Sales registered RM65.9 billion in March 2017**

Malaysia's March manufacturing sales recorded a strong growth of **13.6% (RM7.9 billion)**, rising to **RM65.9 billion** as compared to RM58.0 billion reported a year ago.

Year-on-year, the significant increase in sales value in March 2017 was due to the increase in Electrical and Electronics Products (**11.7%**) Petroleum, Chemical, Rubber and Plastic Products (**17.9%**) and Non-metallic Mineral Products, Basic Metal and Fabricated Metal (**10.1%**). These three sub-sectors contributed 80.0% to the sales value of the manufacturing sector.

Total employees engaged in the Manufacturing sector in March 2017 was **1,046,040 persons**, an increase of **2.1%** or 21,865 persons as compared to 1,024,175 persons in March 2016.

Salaries & wages paid in March 2017 increased by **7.8% (RM248.4 million)** to record **RM3,452.5 million**.

Sales value per employee increased by **11.2%** to record **RM63,008** as compared with the same month of the previous year.

**\*Notes:**

Data for March 2017 is **provisional**. The data will be updated based on the latest available figures and subsequently published in the April 2017 publication.

**Released By:**

**DR MOHD UZIR MAHIDIN**  
**CHIEF STATISTICIAN MALAYSIA**  
**DEPARTMENT OF STATISTICS MALAYSIA**

**11 MAY 2017**

**Contact person:**

Ho Mei Kei  
Public Relation Officer  
Corporate and User Services Division  
Department of Statistics, Malaysia  
**Tel** : +603-8885 7942  
**Fax** : +603-8888 9248  
**Email** : mkho[at]stats.gov.my

**Contact person:**

Baharudin Mohamad  
Public Relation Officer  
Strategic Communication and International Division  
Department of Statistics Malaysia  
**Tel** : +603-8090 4681  
**Fax** : +603-8888 9248  
**Email** : baharudin[at]dosm.gov.my

**Copyright ©2025 Department of Statistics Malaysia Official Portal. All Rights Reserved.**