



MINISTRY OF ECONOMY
DEPARTMENT OF STATISTICS MALAYSIA

MONTHLY MANUFACTURING STATISTICS MALAYSIA, JANUARY 2016

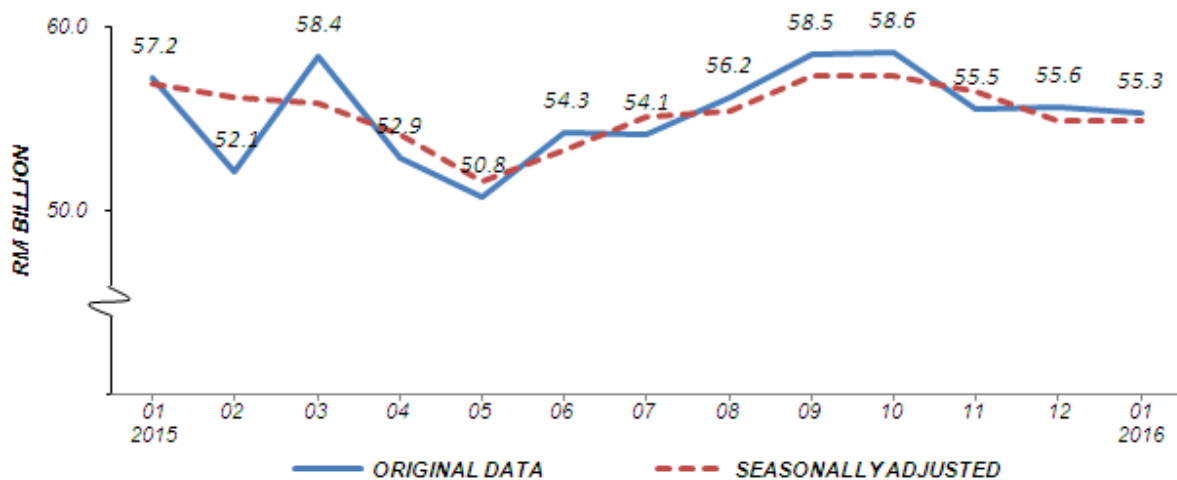
PERFORMANCE IN JANUARY 2016

1. SALES VALUE

The sales value of the Manufacturing sector in January 2016 decreased by 3.4% (RM1.9 billion) to record RM55.3 billion as compared to RM57.2 billion reported a year ago (Chart 1). Meanwhile, month-on-month basis, the sales value decreased by 0.6% (RM0.3 billion) compared with the preceding month. The sales value in December 2015 remained unchanged.

On a seasonally adjusted month-on-month, the sales value in January 2016 decreased by 0.1%. Year-on-year, the decrease in sales value in January 2016 was due to the decrease in Petroleum, Chemical, Rubber and Plastic Products (-22.7%) and Transport Equipment & Other Manufactures (-5.2%).

Chart 1 : Sales Value of the Manufacturing Sector



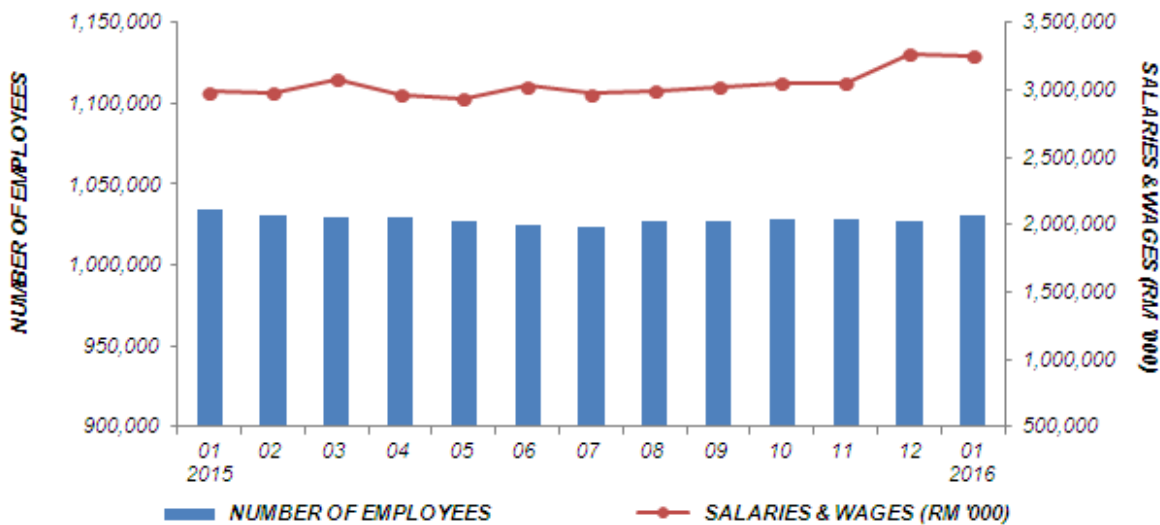
2. NUMBER OF EMPLOYEES

Total employees engaged in the Manufacturing sector in January 2016 was 1,030,153 persons, a decrease of 0.4% or 4,436 persons as compared to 1,034,589 persons in January 2015 (Chart 2). Meanwhile, month-on-month basis, the number of employees increased by 0.3% as compared to 1,027,044 persons in the preceding month.

3. SALARIES & WAGES

Year-on-year basis, salaries & wages paid in January 2016 increased by 8.9% (RM265.0 million) as compared with the corresponding month of the previous year. Meanwhile, month-on-month basis, the total amount paid in January 2016, decreased by 0.3% (RM9.7 million) to register RM3,251.0 million.

Chart 2 : Number of Employees and Salaries & Wages in Manufacturing Sector

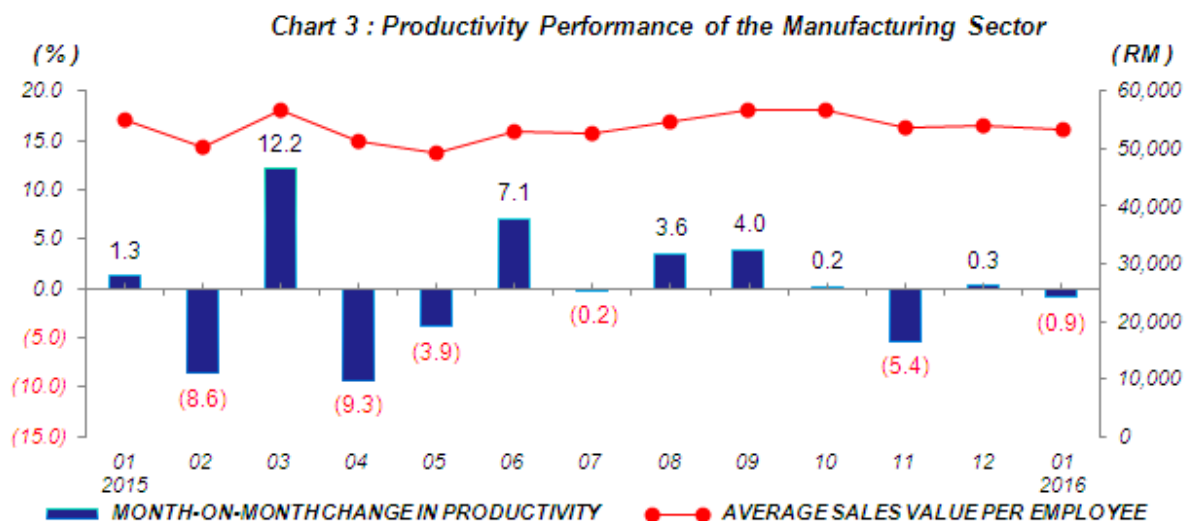


4. AVERAGE SALARIES & WAGES PER EMPLOYEE

The average salaries & wages paid per employee increased by 9.4% in January 2016 as compared to the same month in 2015. Meanwhile, average salaries & wages paid per employee registered RM3,156 in January 2016, a decrease of 0.6% compared to previous month.

5. PRODUCTIVITY

Productivity or average sales value per employee in January 2016 decreased by 3.0% as compared with the same month of the previous year. Meanwhile, productivity in January 2016 decreased by 0.9% month-on-month to register RM53,653 (Chart 3).



*** Notes:**

Data for January 2016 is **provisional**. The data will be updated based on the latest available figures and subsequently published in the February 2016 publication.

**THE OFFICE OF CHIEF STATISTICIAN MALAYSIA
DEPARTMENT OF STATISTICS MALAYSIA
11 MARCH 2016**

Contact person:

Ho Mei Kei
Public Relation Officer
Corporate and User Services Division
Department of Statistics, Malaysia
Tel : +603-8885 7942
Fax : +603-8888 9248
Email : mkho@stats.gov.my

Contact person:

Baharudin Mohamad
Public Relation Officer
Strategic Communication and International Division
Department of Statistics Malaysia

Tel : +603-8885 7942

Fax : +603-8888 9248

Email : baharudin[at]dosm.gov.my

Copyright © 2025 Department of Statistics Malaysia Official Portal. All Rights Reserved.