

Embargo: Only to be published or disseminated at 1200 hours, Wednesday, January 24, 2024



MINISTRY OF ECONOMY
DEPARTMENT OF STATISTICS MALAYSIA

**MEDIA STATEMENT
FOR MALAYSIAN ECONOMIC INDICATORS
LEADING, COINCIDENT & LAGGING INDEXES
NOVEMBER 2023**

***The Leading Index recorded 109.8 points in November 2023,
reflecting a modest economic growth in the near future***

PUTRAJAYA, January 24, 2024 - Today, the Department of Statistics Malaysia released the ***Malaysian Economic Indicators: Leading, Coincident & Lagging Indexes for November 2023***. The Leading Index (LI) is a tool utilised for predicting economic trends for an average of four to six months ahead.

Chief Statistician Malaysia, Dato' Sri Dr. Mohd Uzir Mahidin said, "Malaysia witnessed a decrease in the Leading Index by a negative 0.2 per cent to 109.8 points in November 2023 as compared to 110.0 points in the same month of the previous year (**Exhibit I**). This decline is owing to the unfavourable performance in the Number of Housing Units Approved (-25.8%) and Real Imports of Semiconductors (-18.3%). However, the Bursa Malaysia Industrial Index showed a growth of 17.1 per cent and remained positive since May 2023. The monthly performance of the LI rebounded by 0.5 per cent as compared to negative 0.1 per cent in the previous month, driven by a significant increase in Real Imports of Semi Conductors (1.0%)".

Looking at the smoothed long-term trend in November 2023, LI remained below the 100.0 point trend. Accordingly, Malaysia's economy is foreseen to maintain its moderate growth supported by the resilient performance of domestic-oriented industries despite continuing to face the uncertainty of the international market (**Exhibit II**).

As for the current economic position, the Coincident Index (CI) recorded 123.7 points, an increase of 2.6 per cent as compared to 120.3 points in the same month of the

preceding year. This performance was contributed by all components, mainly the Real Contributions Value, EPF (13.7%). In contrast to the annual performance, the monthly CI shrank by a negative 0.3 per cent, influenced by lackluster performances in all components except for Real Salaries & Wages in Manufacturing (0.1%).

The Department of Statistics Malaysia (DOSM) has launched OpenDOSM NextGen as a medium that provides a catalog of data and visualisations to facilitate users' analysis of various data and can be accessed through <https://open.dosm.gov.my>.

DOSM will conduct the Agricultural Census in 2024. Please visit <https://www.myagricensus.gov.my/> for more information. The theme is "Agriculture Census, Key to Agricultural Development".

The Government of Malaysia has declared National Statistics Day (MyStats Day) on October 20th each year. MyStats Day theme is "Statistics is the Essence of Life".

The Central Database (PADU) was launched on 2 January 2024. PADU contains individual and household profiles covering citizens and permanent residents of Malaysia. The main goal of PADU is to ensure that Malaysians are not left behind from citizen centric initiatives implemented by the Government. Your kind cooperation is requested to register and update PADU by 31 March 2024. Please visit <https://www.padu.gov.my> for more information related to PADU or contact the following hotlines:

- i) Department of Statistics Malaysia : 1-800-88-7720 /1-800-88-7721
- ii) Online Enquiries through SISPA: <https://padu.spab.gov.my>.

Released by:

**THE OFFICE OF CHIEF STATISTICIAN MALAYSIA
DEPARTMENT OF STATISTICS MALAYSIA
JANUARY 24, 2024**

Exhibit I: Leading Composite Index

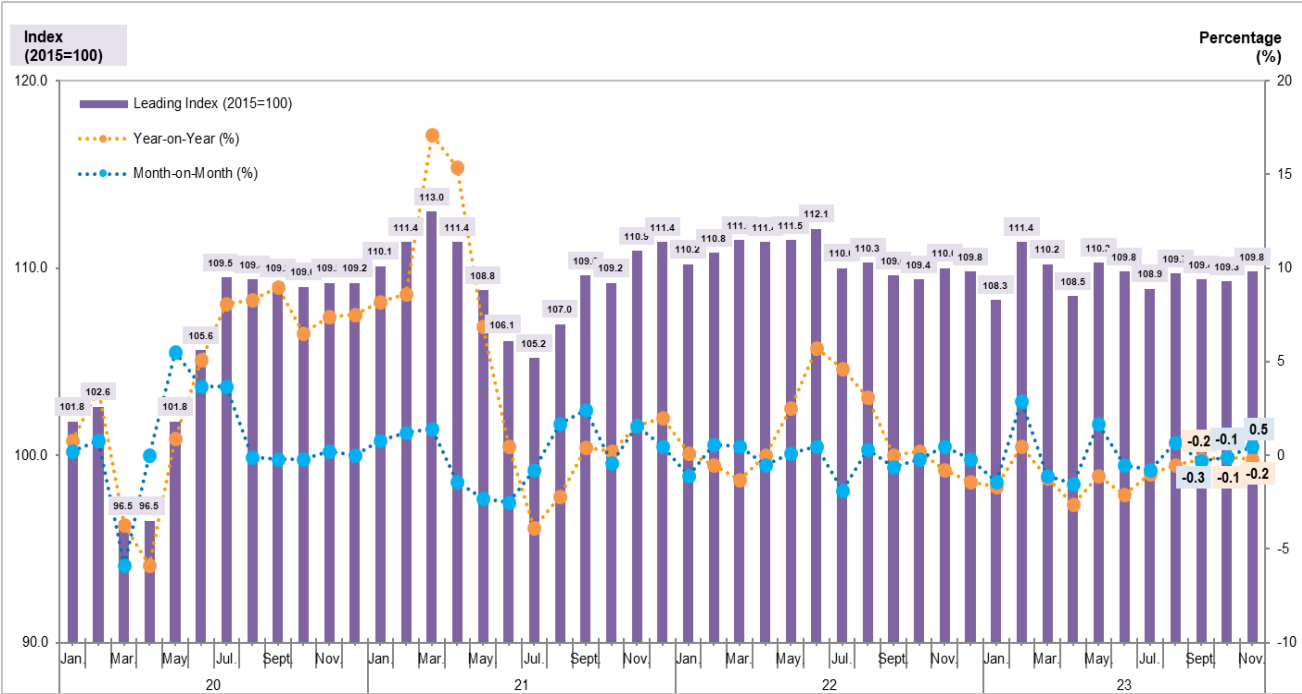


Exhibit II: Leading Composite Index (Long Term Trend = 100) and Business Cycle

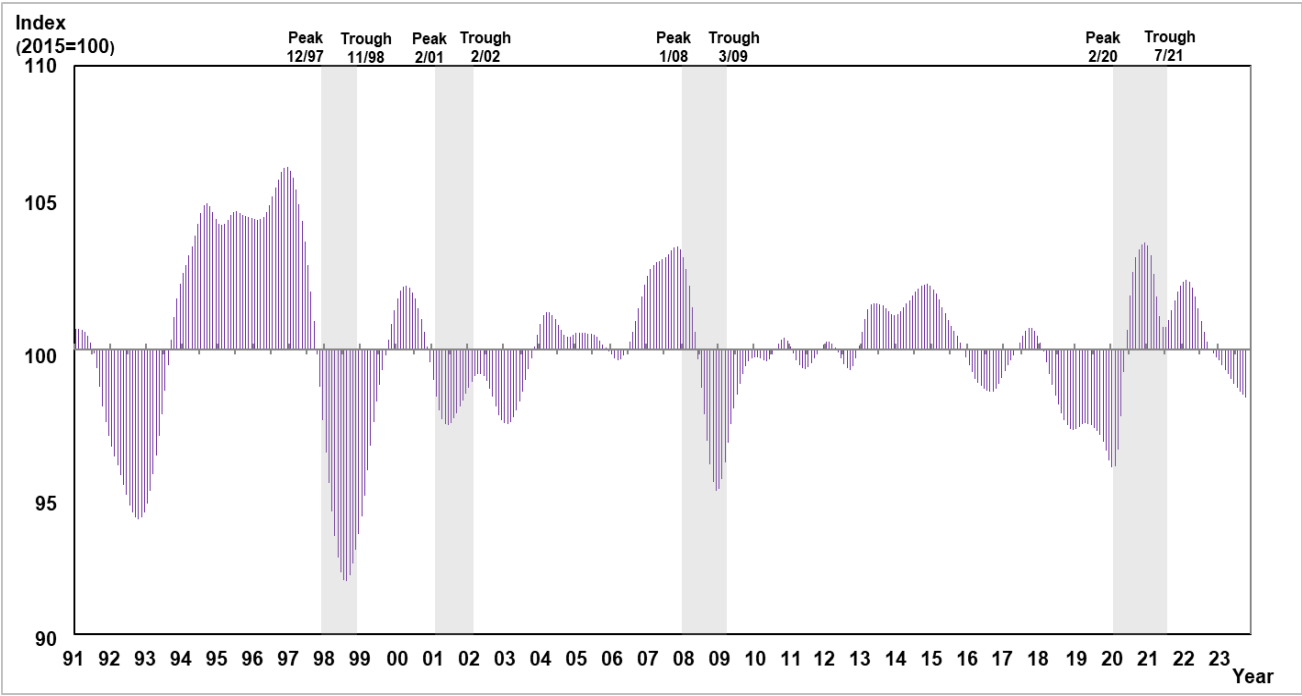


Exhibit III: Annual Changes of Leading Index Components

