

**Embargo: Only to be published or disseminated at 1200 hour, Thursday, December 11<sup>th</sup> 2025**



## **MEDIA STATEMENT**

MINISTRY OF ECONOMY  
DEPARTMENT OF STATISTICS MALAYSIA

Block C6 & C7, Complex C,  
Federal Government Administrative Centre, Precinct 1,  
62514 Federal Territory of Putrajaya  
Telephone : 03 - 8090 4681

### ***PERSON WITH DISABILITY STATISTICS, MALAYSIA, 2024*** ***DECEMBER 2025***

---

***805,509 persons with disabilities registered in Malaysia, representing  
2.4 per cent of population in 2024***

**PUTRAJAYA, DECEMBER 11<sup>th</sup>, 2025** –The Department of Statistics Malaysia (DOSM) has officially released **Person with Disability Statistics, Malaysia, 2024**, a comprehensive publication that presents selected indicators on persons with disabilities. The report covers statistics on population, health, education, employment, income and expenditure, welfare services and sports. The compilation of these statistics is based on the United Nations Convention on the Rights of Persons with Disabilities (UNCRPD).

Chief Statistician Malaysia, Dato' Sri Dr. Mohd Uzir Mahidin, stated: "In 2024, Malaysia recorded 805,509 registered persons with disabilities (PWD), representing 2.4 per cent of the national population. This underscores the importance of inclusive policies to ensure equal rights and opportunities for all Malaysians."

Within the **disability categories**, learning disabilities recorded the highest number of registrations in 2024, with 299,128 persons or 37.1 per cent. This was followed by physical disabilities with 286,634 persons or 35.6 per cent. Visual impairment accounted for 68,665 persons or 8.5 per cent, while speech disabilities recorded the lowest number of registrations with 4,136 persons or 0.5 per cent.

From the **education** perspective, the number of Students with Special Educational Needs (MBPK) in 2024 increased across all types and education levels as compared to 2023. Special Education Schools (SPK) recorded growth at every level with rising by 5.6 per cent at pre-school, 11.0 per cent at primary and 4.6 per cent at secondary level.

**Employment** among civil servants with disabilities also showed positive growth. There were 4,209 civil servants with disabilities in 2024, representing an increase of 7.9 per cent as compared to 3,901 persons in 2023. Negeri Sembilan recorded the highest increase at 20.1 per cent from 169 persons in 2023 to 203 persons in 2024. Sabah recorded an increase of 17.2 per cent, while Kedah recorded an increase of 13.2 per cent.

**Household income and expenditure** among households with PWD also improved. The median monthly household gross income rose from RM4,390 in 2022 to RM5,104 in 2024, while the mean monthly household gross income increased from RM5,679 in 2022 to RM6,540 in 2024. At the same time, mean monthly household consumption expenditure grew from RM3,974 in 2022 to RM4,545 in 2024.

In terms of **welfare services**, a total of 262,618 persons benefited from the Department of Social Welfare (JKM) assistance amounting to RM1.1 billion. The largest category of assistance was assistance for PWD who are incapable of work, which reached 120,844 persons. This was followed by the PWD worker allowance supporting 106,055 persons and assistance for the care of bedridden/ chronically ill PWD which benefited 34,476 persons.

**Sports** participation among persons with disabilities also recorded encouraging growth. The number of disabled athletes increased by 36.6 per cent, rising from 71 persons in 2023 to 97 persons in 2024. Of this total, 76 were male athletes while 21 were female athletes.

The **Person with Disability Statistics, Malaysia, 2024** publication is now available to the public. It serves as a crucial source of information for government planning and policy formulation, ensuring that PWD are granted equal rights and opportunities for full participation in society.

The full report of Person with Disability Statistics, Malaysia, 2024 can be downloaded for free on the Department of Statistics, Malaysia portal ([www.dosm.gov.my](http://www.dosm.gov.my)).

Malaysia, for the first time, ranked as number one (1) globally in the biennial Open Data Inventory (ODIN) 2024/25 report released by Open Data Watch (ODW), surpassing 197 other countries. This achievement marks a significant leap from its 67<sup>th</sup> position in the ODIN 2022/23 assessment.

OpenDOSM NextGen is a medium that provides data catalogue and visualisations to facilitate users' analysis and can be accessed through <https://open.dosm.gov.my>.

**Table 1: Cumulative number of registered PWD with Department of Social Welfare by state, Malaysia, 2024**

State	Estimated population ('000)	Registered PWD population	Percentage of registered PWD (%)
<b>Malaysia</b>	<b>34,052.1</b>	<b>805,509</b>	<b>2.4</b>
Johor	4,184.4	92,287	2.2
Kedah	2,217.1	68,863	3.1
Kelantan	1,887.9	57,014	3.0
Melaka	1,046.7	35,098	3.4
Negeri Sembilan	1,239.5	35,366	2.9
Pahang	1,667.7	47,195	2.8
Pulau Pinang	1,800.5	45,134	2.5
Perak	2,569.4	69,694	2.7
Perlis	296.8	10,489	3.5
Selangor	7,362.7	136,828	1.9
Terengganu	1,231.5	38,947	3.2
Sabah	3,742.0	53,238	1.4
Sarawak	2,517.5	54,083	2.1
W.P. Kuala Lumpur	2,067.5	58,678 <sup>a</sup>	2.8 <sup>a</sup>
W.P. Labuan	100.8	2,595	2.6
W.P. Putrajaya	120.3	-	-

<sup>a</sup>Includes W.P. Putrajaya

Source: Department of Statistics Malaysia  
Department of Social Welfare

**Table 2: Cumulative number of registered PWD by category of disabilities, Malaysia, 2023 and 2024**

Category of disabilities	2023	2024	Percentage change (%)	Share 2024 (%)
<b>Total</b>	<b>736,607</b>	<b>805,509</b>	<b>9.4</b>	<b>100.0</b>
Visually impaired	63,779	68,665	7.7	8.5
Hearing	46,510	49,382	6.2	6.1
Physical	265,221	286,634	8.1	35.6
Learning	265,503	299,128	12.7	37.1
Speech	3,846	4,136	7.5	0.5
Mental	59,053	63,012	6.7	7.8
Multiple	32,695	34,552	5.7	4.3

Source: Department of Social Welfare

**Table 3: Number of Students with Special Educational Needs (MBPK) by type and level of education, Malaysia, 2023 and 2024**



Type of education for MBPK	2023			2024		
	Pre-schools	Primary	Secondary	Pre-schools	Primary	Secondary
Special Education Schools (SPK)	195	1,598	1,065	206	1,773	1,114
Special Education Programmes Integration (PPKI)	1,350	53,885	39,002	1,472	62,113	43,242
Inclusive Education Programmes (PPI)	257	9,820	8,877	357	12,831	9,156

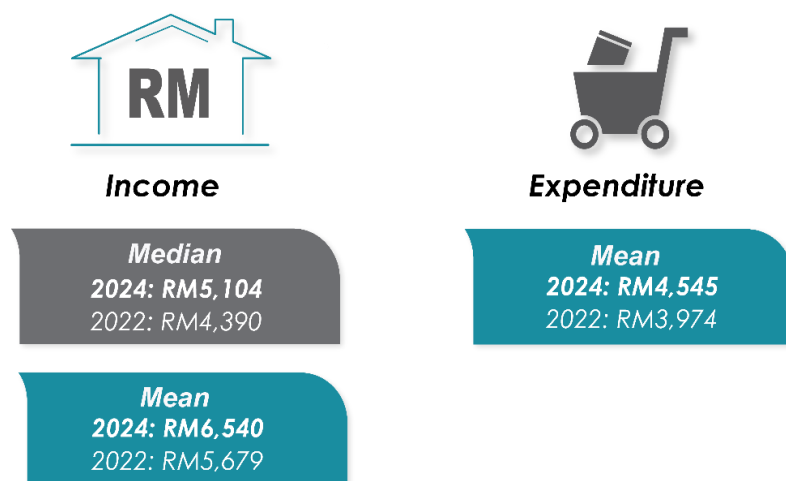
Source: Ministry of Education Malaysia

**Table 4: Number of PWD civil servants by state, Malaysia, 2023 and 2024**

State	2023	2024	Percentage change (%)	Share 2024 (%)
<b>Malaysia</b>	<b>3,901</b>	<b>4,209</b>	<b>7.9</b>	<b>100.0</b>
Johor	392	416	6.1	9.9
Kedah	257	291	13.2	6.9
Kelantan	222	244	9.9	5.8
Melaka	183	187	2.2	4.4
Negeri Sembilan	169	203	20.1	4.8
Pahang	288	295	2.4	7.0
Pulau Pinang	219	228	4.1	5.4
Perak	348	374	7.5	8.9
Perlis	66	72	9.1	1.7
Selangor	484	528	9.1	12.5
Terengganu	171	187	9.4	4.4
Sabah	174	204	17.2	4.8
Sarawak	199	202	1.5	4.8
W.P. Kuala Lumpur	389	422	8.5	10.0
W.P. Labuan	15	15	0.0	0.4
W.P. Putrajaya	419	436	4.1	10.4

Source: Department of Public Services

**Exhibit 1: Monthly household gross income and consumption expenditure for households with PWD, Malaysia, 2022 dan 2024**



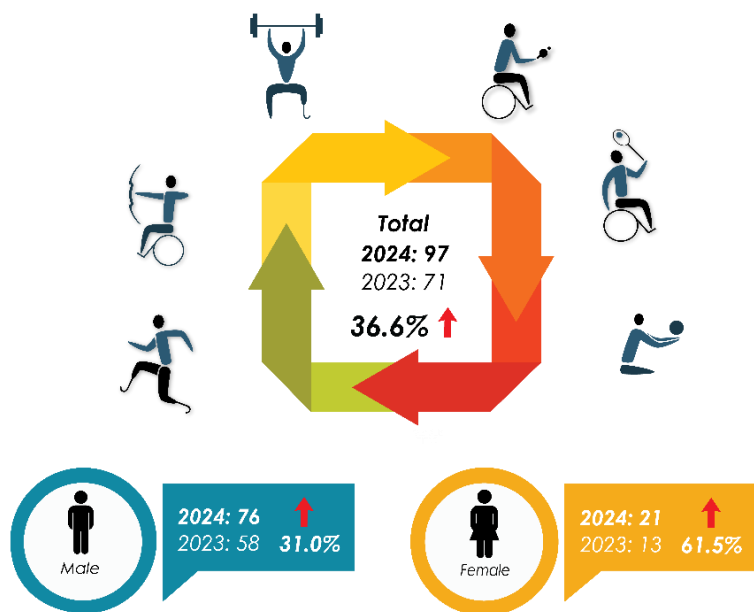
Source: Department of Statistics Malaysia

**Table 5: Number of recipients and total assistance for PWD by type of assistance, Malaysia, 2023 and 2024**

Type of assistance	2023		2024	
	Number of recipients	Total assistance (RM'000)	Number of recipients	Total assistance
<b>Total</b>	<b>233,665</b>	<b>1,048,054.6</b>	<b>(RM'000)</b>	<b>1,092,720.1</b>
PWD worker allowance	98,508	521,704.8	106,055	515,920.8
Assistance for PWD incapable of work	105,397	359,784.9	120,844	399,914.7
Assistance for the care of the bedridden PWD/ chronically ill patients	28,340	163,811.0	34,476	174,221.6
Artificial/ assistive devices	1,420	2,753.9	1,243	2,663.0

Source: Department of Social Welfare

**Exhibit 2: Number of disabled athletes by sex, Malaysia, 2023 and 2024**



Source: National Sport Council of Malaysia

*Released by:*

**THE OFFICE OF CHIEF STATISTICIAN MALAYSIA**

**DEPARTMENT OF STATISTICS MALAYSIA**

**11<sup>TH</sup> DECEMBER 2025**