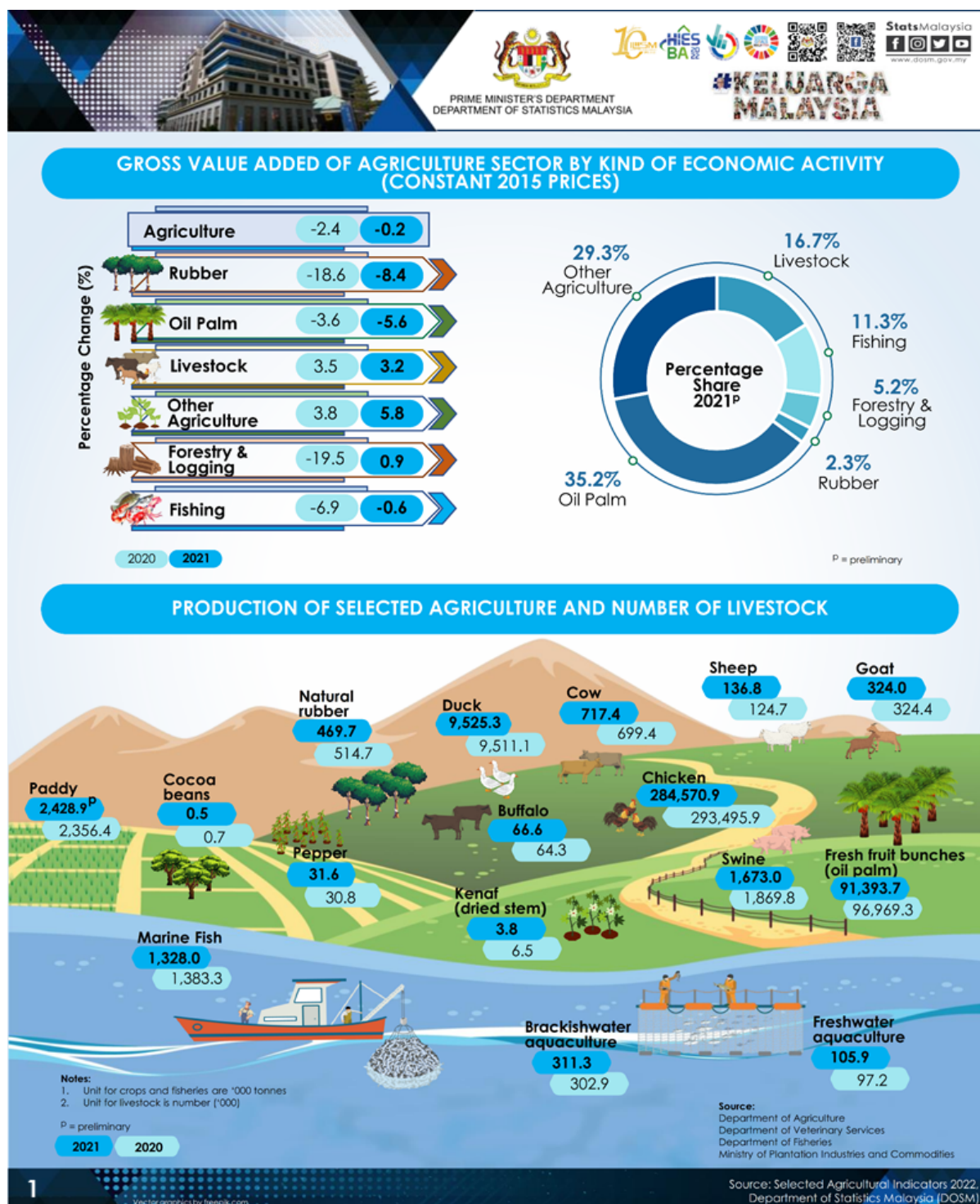




MINISTRY OF ECONOMY  
DEPARTMENT OF STATISTICS MALAYSIA

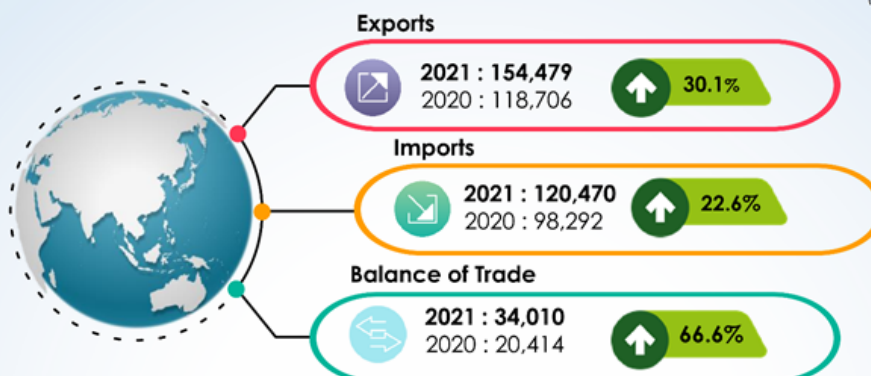
## SELECTED AGRICULTURAL INDICATORS, MALAYSIA, 2021





## EXTERNAL TRADE IN AGRICULTURE SECTOR

(RM million)



Source : Ministry of Agriculture and Food Industries

## MEDIAN AND MEAN MONTHLY SALARIES AND WAGES FOR SKILLED AGRICULTURE WORKERS

Median and mean salaries & wages for skilled agriculture workers are respectively

**RM1,695**  
and  
**RM1,853**



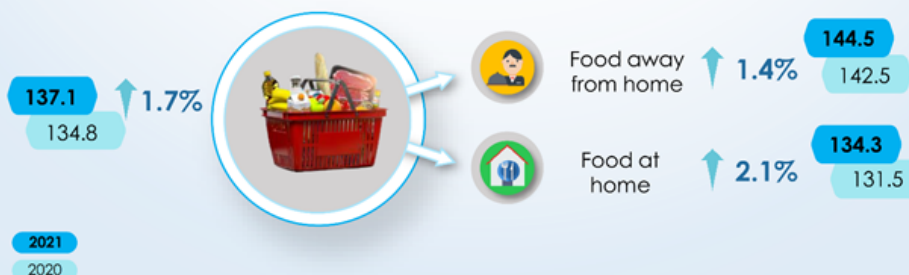
**RM1,740 (RM1,291)**  
**RM1,868 (RM1,572)**



**RM1,530 (RM1,211)**  
**RM1,732 (RM1,434)**

Median 2021 (2020)  
Mean 2021 (2020)

## CONSUMER PRICE INDEX (CPI) FOR SUB-GROUPS OF FOOD AND NON-ALCOHOLIC BEVERAGES



## **The agriculture sector shifted into a recovery phase in 2021**

This publication consists of statistics on economic performance, employment, domestic production and external trade in the agriculture sector. These statistics detail the findings from a sectoral perspective for the three main agriculture sub-sectors, namely crops, livestock and fisheries, as well as the social perspective that contribute to Malaysia's economic position in 2021.

In 2021 Malaysia's economy has gained the momentum by recording RM1,386.7 billion Gross Domestic Product (GDP), increased 3.1 per cent as compared to RM1,345.1 billion in 2020. Growth in agriculture sector decreased by 0.2 per cent in 2021 as compared to negative 2.4 per cent in the previous year. The decrease was caused by the commodity sub-sector especially oil palm which recorded a growth of negative 5.6 per cent (2020: -3.6%). Even though the growth rate of oil palm showed a decline, it was the main contributor to the value added of agriculture sector with RM34.8 billion or 35.2 per cent.

Overall, the production of four major commodity crops, namely fresh fruit bunches (oil palm), natural rubber, kenaf (dried stem) and cocoa beans, in 2021 showed a decreasing trend as compared to 2020. Though the production of fresh fruit bunches (oil palm) was the highest among the agricultural commodities, its production decreased by 5,575.6 thousand tonnes with 5.7 per cent as compared to previous year.

Looking at the livestock sub-sector, the production of chicken/ duck egg recorded an increase of 5.6 per cent in 2021 to 839.7 thousand tonnes as compared to 795.5 thousand tonnes in the previous year. On the other hand, livestock production for beef, mutton and pork declined by double-digit with 11.1, 10.6 and 10.5 per cent respectively.

Landings of marine fish in 2021 was 1,328.0 thousand tonnes, decreased by 4.0 per cent as compared to 1,383.3 thousand tonnes in 2020. Meanwhile, the production of freshwater and brackishwater aquaculture increased by 9.0 and 2.8 per cent respectively as compared to the previous year.

The number of employed persons in 2021 amounted to 15,064.2 thousand persons (2020: 14,956.7 thousand persons). Out of total, 1,550.0 thousand persons (10.3%) were involved in the agriculture sector. This number showed a decrease compared to the previous year. The employed persons in the agriculture sector was still dominated by citizen with 63.6 per cent while the rest are non-citizens.

Based on the Salaries & Wages Survey conducted by the Department of Statistics Malaysia, in 2021, the number of recipients of salaries and wages for skilled agriculture worker decreased to 76.7 thousand persons as compared to 142.1 thousand in 2020. The median monthly salaries & wages for the agriculture sector increased to RM1,695 as compared to 2020 (RM1,291). The mean salaries & wages of skilled agriculture worker also increased to RM1,853 in 2021 as compared to RM1,547 in the previous year. The median monthly salaries & wages received by male employees increased to RM1,740 as compared to RM1,291 in 2020 while females received RM1,530. The mean monthly salaries & wages of male and female employees received were RM1,868 and RM1,732 respectively.

The agriculture sector contributes to the country through exports, especially by products produced from agricultural commodities such as palm oil. Total agricultural exports increased from RM118.7 billion in 2020 to RM154.5 billion in 2021. Meanwhile, total imports of the agriculture sector also showed an increase to RM120.5 billion in 2021 as compared to RM98.3 billion in 2020.

**Released by:**

**DEPARTMENT OF STATISTICS MALAYSIA**

**#myHariBulan# #myBulan# #myTahun#**

**Contact person:**

**Baharudin Mohamad**

Public Relation Officer

Strategic Communication and International Division

Department of Statistics, Malaysia

**Tel** : +603-8885 7942

**Fax** : +603-8888 9248

**E-mail** : baharudin[at]dosm.gov.my

**Contact person:**

Baharudin Mohamad

Public Relation Officer

Strategic Communication and International Division

Department of Statistics Malaysia

Tel : +603-8090 4681

Fax : +603-8888 9248

Email : baharudin[at]dosm.gov.my

**Copyright ©2025 Department of Statistics Malaysia Official Portal. All Rights Reserved.**