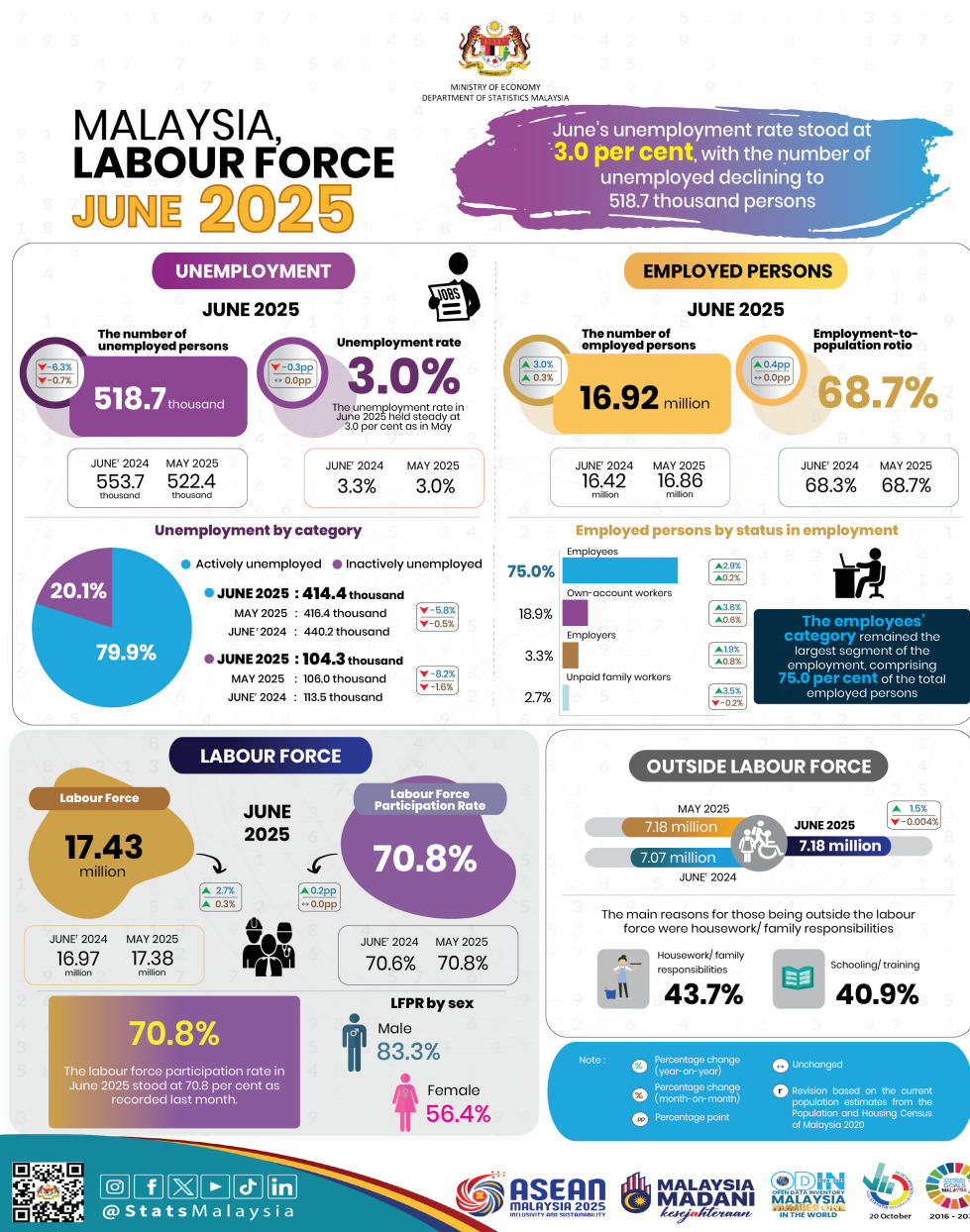




MINISTRY OF ECONOMY
DEPARTMENT OF STATISTICS MALAYSIA

LABOUR FORCE STATISTICS, JUNE 2025



- The number of **employed persons** continued its upward trajectory in June 2025, rising by **0.3 per cent (+52.9 thousand persons)** to **16.92 million persons** compared to 16.86 million persons in May 2025. The **employment-to-population ratio**, which indicates the ability of an economy to create employment, remained unchanged at **68.7 per cent** (May 2025: 68.7 per cent).
- Employment across economic sectors continued to increase during the month, led by steady growth in the Services sector, particularly in Wholesale and retail trade; Accommodation and food & beverage services; as well as Information & communication activities. A similar positive trend was also observed in the Manufacturing, Construction, Mining & quarrying, and Agriculture sectors.
- The **employees'** category remained the largest segment of the employment, comprising **75.0 per cent** of the total employed persons. This category experienced a rise of **0.2 per cent (+29.4 thousand persons)** to **12.69 million persons** in June 2025 (May 2025: 12.66 million persons). Likewise, the number of **own-account workers** also posted an increase, climbing by **0.6 per cent (+19.4 thousand persons)** to **3.20 million persons** (May 2025: 3.18 million persons).
- In June 2025, the number of **unemployed persons** continued to be on a downtrend, falling by **0.7 per cent (-3.7 thousand persons)** to **518.7 thousand persons** (May 2025: 522.4 thousand persons). On the same note, the **unemployment rate** remained at **3.0 per cent** for the third consecutive month.
- The **labour force** remained on a steady growth, increasing by **0.3 per cent (+49.2 thousand persons)** month-on-month to **17.43 million persons** in June 2025 (May 2025: 17.38 million persons). The **labour force participation rate (LFPR)** during the month stood at **70.8 per cent**, consistent with the previous month.
- In June 2025, the number of persons **outside the labour force** decreased marginally by **0.004 per cent (-0.3 thousand persons)** to **7.18 million persons** (May 2025: 7.18 million persons). The main reasons for those being outside the labour force were **housework/ family responsibilities**, comprising **43.7 per cent**, followed by the **schooling/ training** category at **40.9 per cent**.

The full publication of the Labour Force Report, June 2025 can be downloaded through eStatistik Portal

Released by:
DEPARTMENT OF STATISTICS MALAYSIA

11 August 2025

Contact person:
 Baharudin Mohamad
 Public Relation Officer
 Strategic Communication and International Division
 Department of Statistics Malaysia
 Tel : +603-8090 4681
 Fax : +603-8888 9248
 Email : baharudin[at]dosm.gov.my

Copyright ©2025 Department of Statistics Malaysia Official Portal. All Rights Reserved.