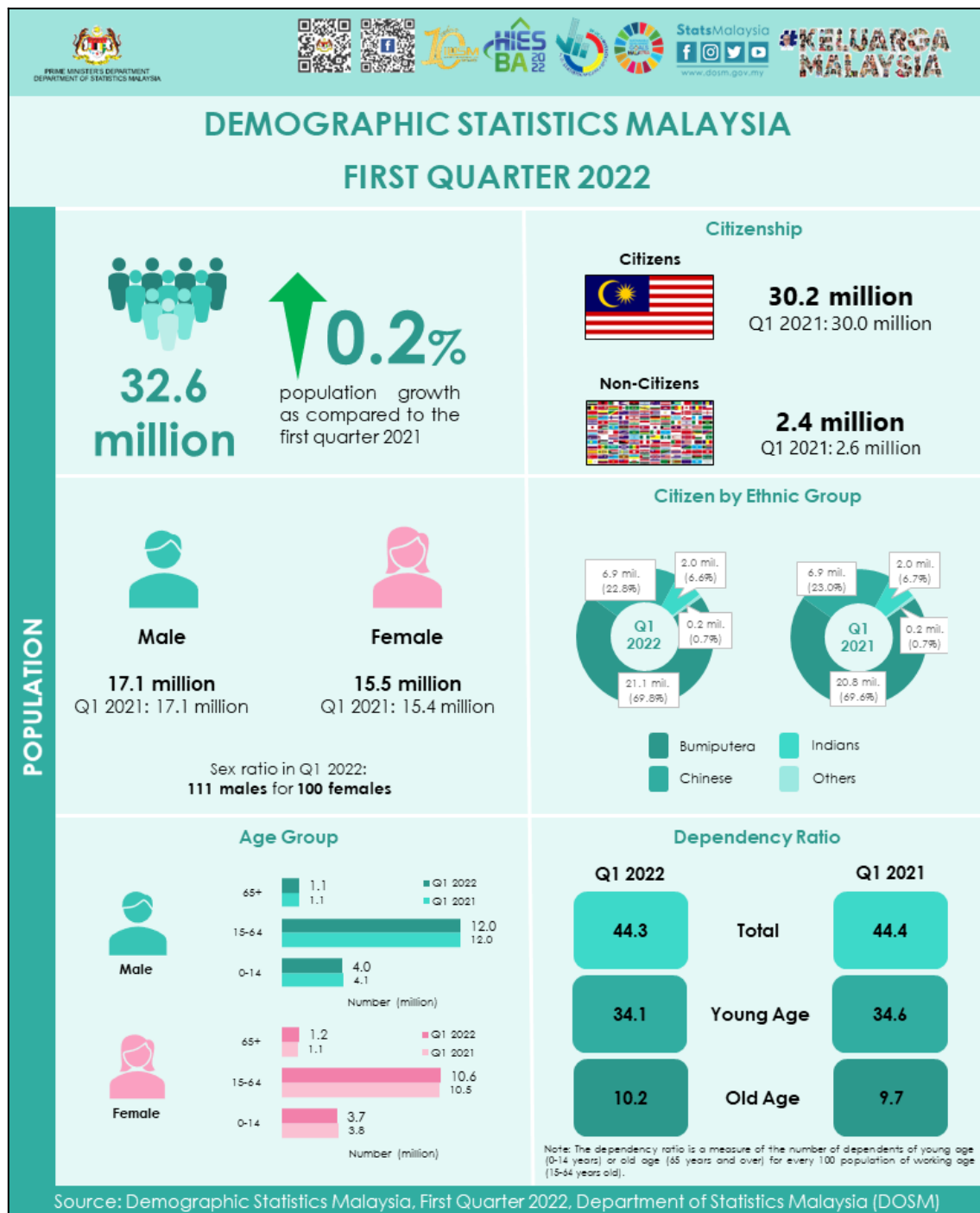


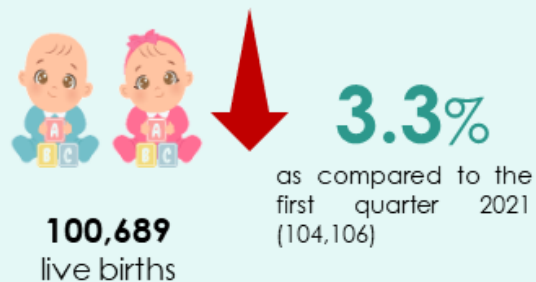


MINISTRY OF ECONOMY
DEPARTMENT OF STATISTICS MALAYSIA

DEMOGRAPHIC STATISTICS FIRST QUARTER 2022, MALAYSIA



LIVE BIRTHS



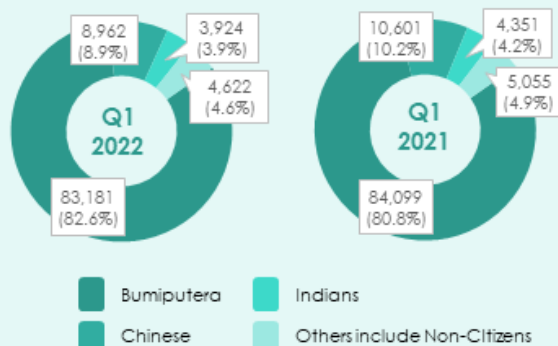
Male Babies

52,037
Q1 2021:
53,890



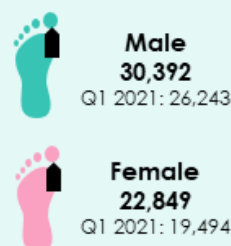
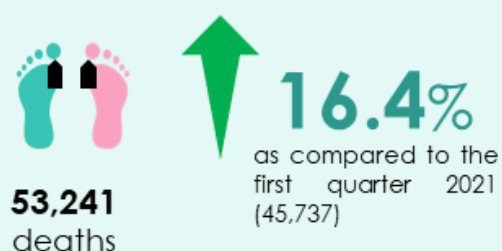
Female Babies

48,652
Q1 2021:
50,216



Year	Month	Change (YoY)	Number
2021 ^p	January	-16.1	32,583
	February	-10.9	33,366
	March	-4.4	38,157
	January - March	-10.4	104,106
2022 ^p	January	9.5	35,666
	February	-5.9	31,412
	March	-11.9	33,611
	January - March	-3.3	100,689

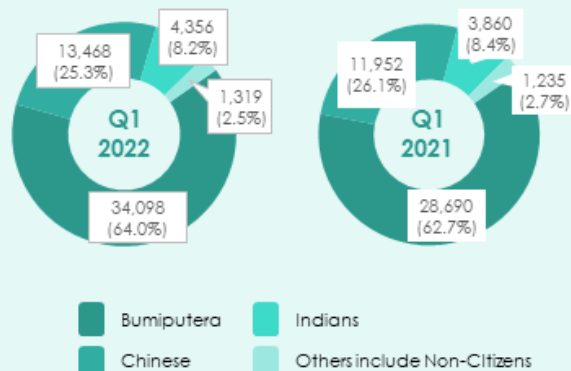
DEATHS



Deaths due to COVID-19

	Q1 2021	Q1 2022
Total	841	3,548
January	397	434
February	309	1,005
March	135	2,109

Source: Ministry of Health Malaysia



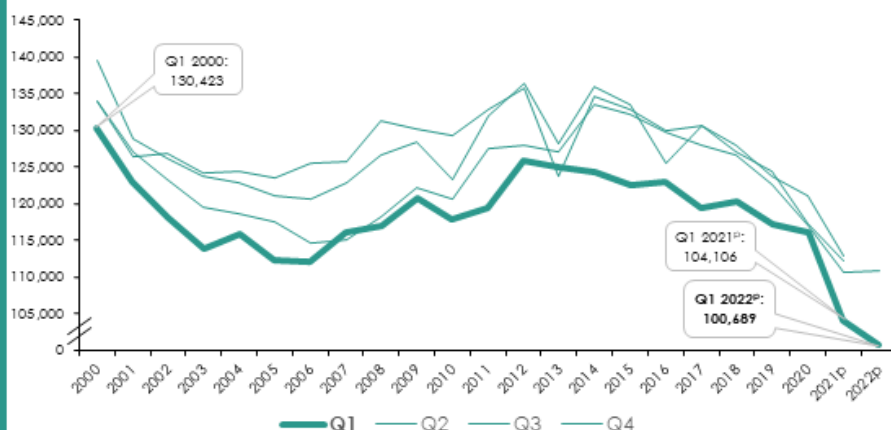
Year	Month	Change (YoY)	Number
2021 ^p	January	0.4	16,105
	February	3.2	14,282
	March	4.4	15,350
	January - March	2.6	45,737
2022 ^p	January	2.2	16,465
	February	9.2	15,603
	March	37.9	21,173
	January - March	16.4	53,241

Source: Demographic Statistics Malaysia, First Quarter 2022, Department of Statistics Malaysia (DOSM)

Live births decreased 3.3 per cent

A total of 100,689 live births were recorded in the first quarter 2022, a decrease of 3.3 per cent as compared to the first quarter 2021 (104,106 births). The first quarter of 2022 recorded the lowest number of births for the same quarter in the period of 2000 to 2022.

Live births by quarterly, Malaysia, 2000-2022^p (Q1, Q2, Q3, Q4)



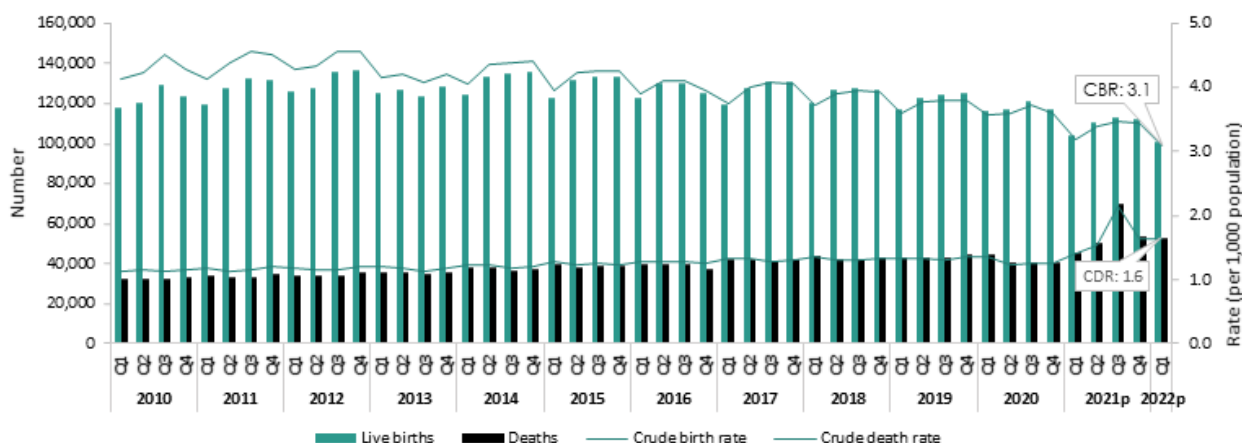
Deaths increased 16.4 per cent

A total of 53,241 deaths were recorded for the first quarter of 2022, an increase of 16.4 per cent as compared to the first quarter 2021 (45,737 deaths). The first quarter of 2022 recorded the highest number of deaths for the same quarter in the period of 2000 to 2022.

Deaths by quarterly, Malaysia, 2000-2022^p (Q1, Q2, Q3, Q4)

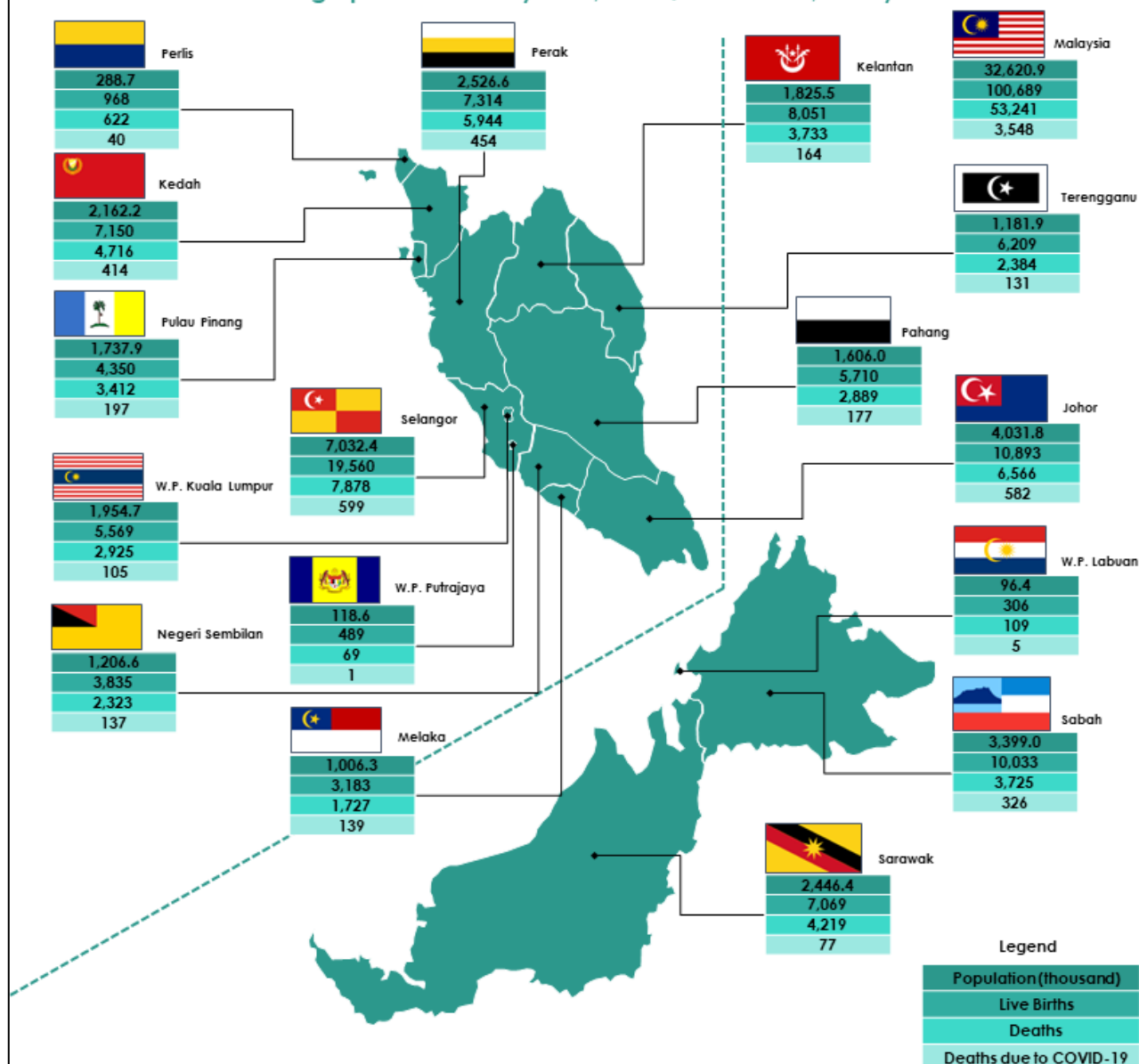


Live Births and Deaths (Number and Rate) by Quarter, 2010-2022^p, Malaysia



Source: Demographic Statistics Malaysia, First Quarter 2022, Department of Statistics Malaysia (DOSM)

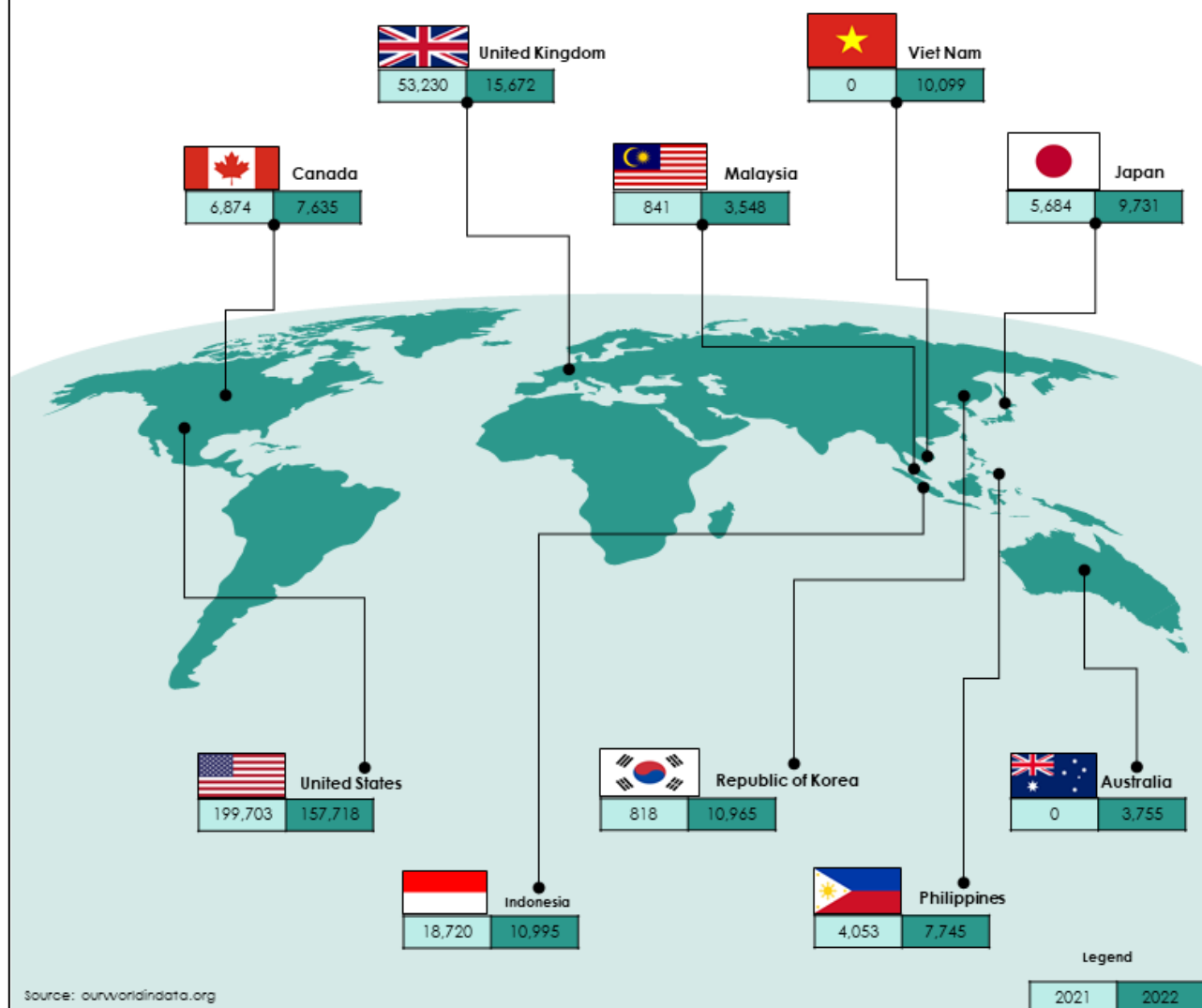
Demographic Statistics by State, First Quarter 2022^P, Malaysia



- Three states with the highest population in the first quarter 2022 were Selangor (21.6%) followed by Johor (12.4%) and Sabah (10.4%).
- Selangor recorded the highest number of live births with 19,560 births (19.4%) while Wilayah Persekutuan Labuan recorded the lowest births with 306 births (0.3%).
- In terms of death, Selangor recorded the highest number with 7,878 deaths (14.8%) while Wilayah Persekutuan Putrajaya recorded the lowest deaths with 69 deaths (0.1%).
- Selangor recorded the highest number of COVID-19 deaths (599 deaths) while Wilayah Persekutuan Putrajaya recorded the lowest death with one death.

Source: Demographic Statistics Malaysia, First Quarter 2022, Department of Statistics Malaysia (DOSM)

Deaths due to COVID-19 in the First Quarter for Selected Countries



For more information on demographic in Malaysia, please visit:

MyDemography
www.dosm.gov.my/mydemography



- ✓ MyPopulation
- ✓ MyVital
- ✓ MyAgeing
- ✓ MyGender

MyCOD
www.dosm.gov.my/mycod



- ✓ Statistics on causes of death by demographic characteristics.

Notes:

¹⁾ Preliminary

- Quarterly period: Q1=January–March; Q2=April–June; Q3=July–September; Q4=October–December.
- The added total may differ due to rounding.
- These statistics were revised based on MyCensus 2020.

Source: Demographic Statistics Malaysia, First Quarter 2022, Department of Statistics Malaysia (DOSM)

Released By:

DEPARTMENT OF STATISTICS, MALAYSIA

#myHariBulan# #myBulan# #myTahun#

Contact person:

Baharudin Mohamad

Public Relation Officer

Strategic Communication and International Division

Department of Statistics, Malaysia

Tel : +603-8885 7942

Fax : +603-8888 9248

E-mail : baharudin[at]dosm.gov.my

Contact person:

Baharudin Mohamad

Public Relation Officer

Strategic Communication and International Division

Department of Statistics Malaysia

Tel : +603-8090 4681

Fax : +603-8888 9248

Email : baharudin[at]dosm.gov.my

Copyright ©2025 Department of Statistics Malaysia Official Portal. All Rights Reserved.